

F.A.U. RTE.	SECTION	COUNTY	TOTAL SHEETS	SHEET NO.
1321	2010-134-T	DUPAGE	40	1
		ILLINOIS	CONTRACT NO. 60N06	

**STATE OF ILLINOIS
DEPARTMENT OF TRANSPORTATION
DIVISION OF HIGHWAYS**

**PROPOSED
HIGHWAY PLANS**

**FAU ROUTE 1321: IL 19 (IRVING PARK RD.) AT YORK RD.
SECTION 2010-134-T**

**ADVANCE CONTRACT
C-91-223-11**

DUPAGE COUNTY



FOR INDEX OF SHEETS, SEE SHEET NO. 2

FOR LIST OF HIGHWAY STANDARDS, SEE SHEET NO. 2

TRAFFIC DATA

DESIGN DESIGNATION:

IRVING PARK ROAD =
3230 (30) PRINCIPAL ARTERIAL 20.98 (PCC-20)

YORK ROAD =
2880 (30) MINOR ARTERIAL 20.38 (PCC-20)

ADT:

IL ROUTE 19 (EAST) = 37,000
IL ROUTE 19 (WEST) = 30,000

YORK ROAD (NORTH) = 28,000
YORK ROAD (SOUTH) = 23,000

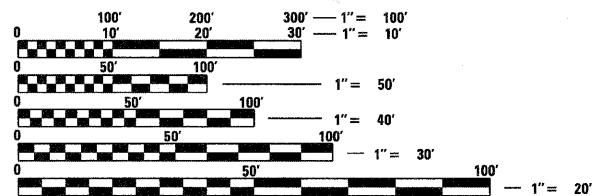
DESIGN SPEED:

IL ROUTE 19 = 40 MPH
YORK ROAD (NORTH) = 45 MPH
YORK ROAD (SOUTH) = 40 MPH

PROJECT LOCATED IN
THE CITY OF CHICAGO

DESCRIPTION OF PROJECT

THIS PROJECT CONSISTS OF RAILROAD EMBANKMENT, TEMPORARY SOIL RETENTION, AND ALL INCIDENTAL AND COLLATERAL WORK AS NECESSARY TO COMPLETE THE IMPROVEMENT SHOWN HEREIN AND AS DESCRIBED IN THE SPECIAL PROVISIONS.

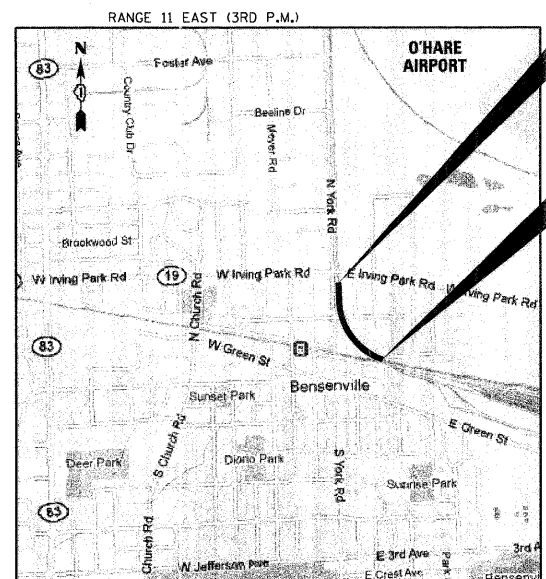


FULL SIZE PLANS HAVE BEEN PREPARED USING STANDARD ENGINEERING SCALES. REDUCED SIZED PLANS WILL NOT CONFORM TO STANDARD SCALES. IN MAKING MEASUREMENTS ON REDUCED PLANS, THE ABOVE SCALES MAY BE USED.

J.U.L.I.E. (JOINT UTILITY LOCATION INFORMATION FOR EXCAVATION)
1-800-892-0123 OR 811
C.U.A.N. (CHICAGO UTILITY ALERT NETWORK)
312-744-7000
RAILROAD UTILITY CONTACT TELEPHONE NUMBERS
1-888-625-8702 (CPR "ONE CALL" FIBER/SIGNAL LOCATE)
1-312-322-6900 (METRA SIGNAL AND COMMUNICATIONS DEPARTMENTS)

PROJECT MANAGER - CATHERINE KIBBLE, PE (847) 705-4269
PROJECT ENGINEER - TIM SCHMIDT, PE (847) 705-4556

CONTRACT NO. 60N06



LOCATION MAP
N.T.S.

GROSS LENGTH = 2035 FT. = 0.385 MILES
NET LENGTH = 2035 FT. = 0.385 MILES

END IMPROVEMENTS
CPR
STA 10296 + 20

BEGIN IMPROVEMENTS
CPR
STA 10275 + 85

ATHAN RATIERMA
062-057599
LICENSED PROFESSIONAL ENGINEER OF ILLINOIS
BY: [Signature] DATE: 3/17/2011
HDR ENGINEERING, INC.
DWGS. 5-11, 28-40
LICENSE EXPIRES NOV. 30, 2011

LANCE C. PETERMAN JR.
062-049587
LICENSED PROFESSIONAL ENGINEER OF ILLINOIS
BY: [Signature] DATE: 3/17/2011
HDR ENGINEERING, INC.
DWGS. 1-4, 12-15, 24
LICENSE EXPIRES NOV. 30, 2011

ANDREW J. PIATK
062-052011
LICENSED PROFESSIONAL ENGINEER OF ILLINOIS
BY: [Signature] DATE: 3/17/2011
GEOSERVICES, INC.
DWGS. 25-27
LICENSE EXPIRES NOV. 30, 2011

STATE OF ILLINOIS
DEPARTMENT OF TRANSPORTATION
DIVISION OF HIGHWAYS

SUBMITTED MARCH 21, 2011

Diane M. O'Keefe
DISTRICT ENGINEER

May 13 2011
Scott E. Sitt P.E.
ENGINEER OF DESIGN AND ENVIRONMENT

May 13 2011
Christine M. Rood
DIRECTOR, DIVISION OF HIGHWAYS

**PRINTED BY THE AUTHORITY
OF THE STATE OF ILLINOIS**

HDR 8550 W. Bryn Mawr Ave., Suite 900
Chicago, IL 60631
312-443-4900
HDR Engineering, Inc.