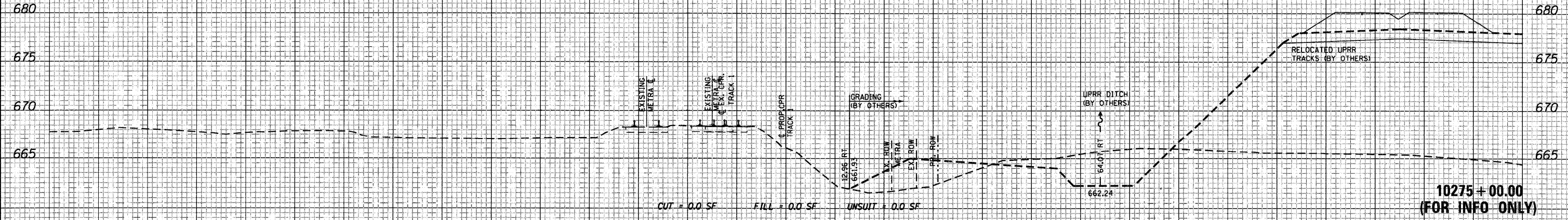
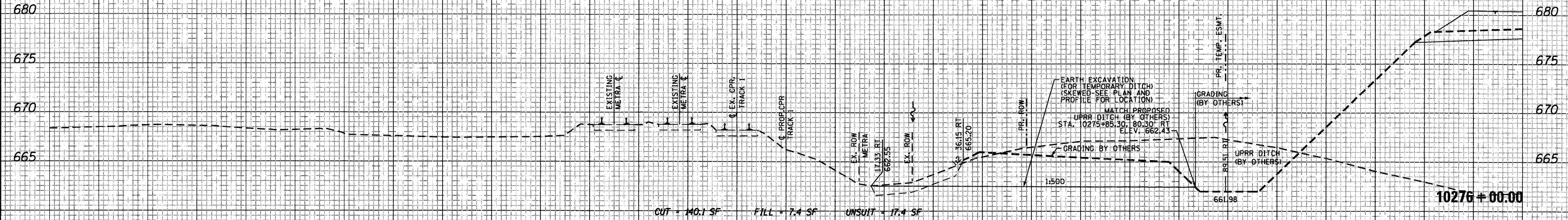
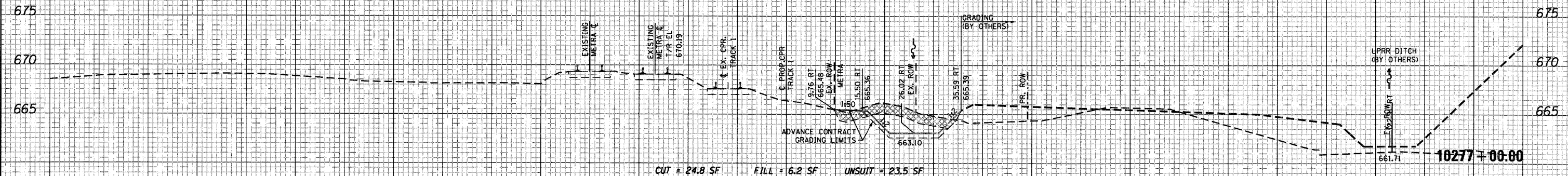


150 140 130 120 110 100 90 80 70 60 50 40 30 20 10 0 10 20 30 40 50 60 70 80 90 100 110 120 130 140 150

NOTES:
 1) UTILITIES NOT SHOWN ON CROSS SECTIONS.
 SEE UTILITY PLANS FOR LOCATION OF EXISTING UTILITIES.
 2) FOR DESIGN CLARITY NOT ALL PROPOSED FUTURE TRACKS
 (BY OTHERS) ARE SHOWN.
 3) CULVERT INLET AND OUTLET PROTECTION NOT SHOWN.
 SEE EROSION CONTROL PLAN FOR DESIGN DETAILS.

DATE	
BY	
FINAL SURVEY	
REVISED SURVEY	
NOTE BOOK NO.	
TEMPLATE AREAS CHECKED	

DATE	
BY	
ORIGINAL SURVEY	
REVISED SURVEY	
NOTE BOOK NO.	
TEMPLATE AREAS CHECKED	



150 140 130 120 110 100 90 80 70 60 50 40 30 20 10 0 10 20 30 40 50 60 70 80 90 100 110 120 130 140 150

FILE NAME = ... \DISIGN\06-SHT-XSC-Res1.dgn	USER NAME = rmatern	DESIGNED - NMR	REVISED -
		DRAWN - NMR	REVISED -
		CHECKED - LGP	REVISED -
		DATE - 03/17/2011	REVISED -

**STATE OF ILLINOIS
DEPARTMENT OF TRANSPORTATION**

CANADIAN PACIFIC RAILWAY CROSS SECTIONS

F.A.U. RTE. 1321	SECTION 2010-134-T	COUNTY DUPAGE	TOTAL SHEETS 40	SHEET NO. 32
CONTRACT NO. 60N06				ILLINOIS FED. AID PROJECT

SCALE: SHEET NO. 2 OF 10 SHEETS STA. 10275+00.00 TO STA. 10277+00.00