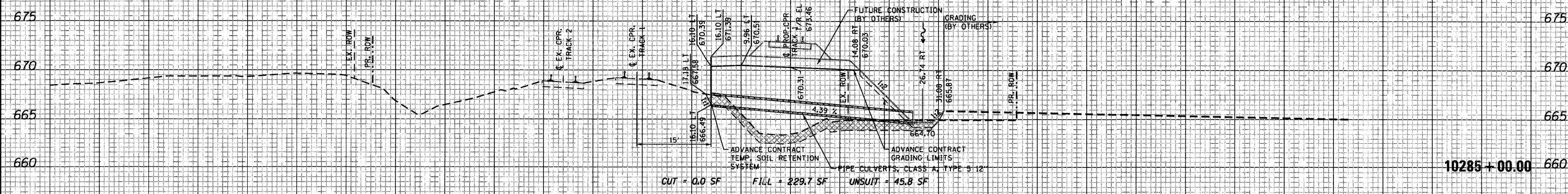
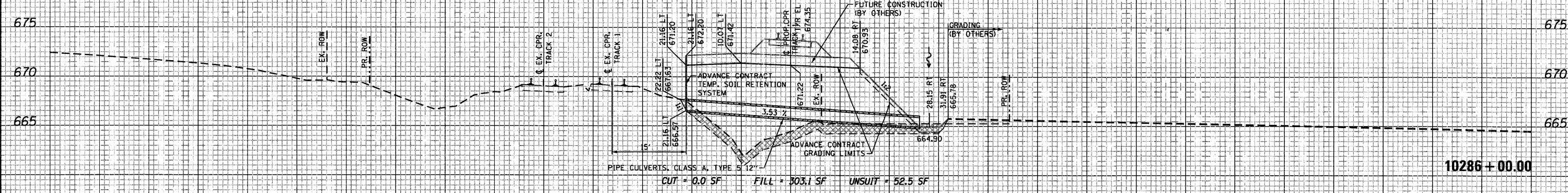
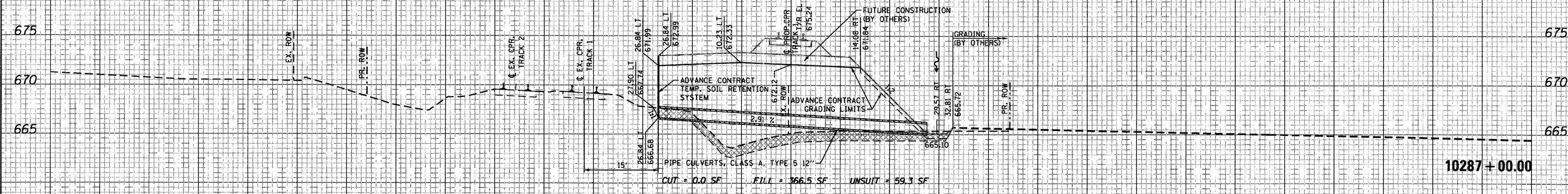


150 140 130 120 110 100 90 80 70 60 50 40 30 20 10 0 10 20 30 40 50 60 70 80 90 100 110 120 130 140 150

NOTES:
 1) UTILITIES NOT SHOWN ON CROSS SECTIONS.
 SEE UTILITY PLANS FOR LOCATION OF EXISTING UTILITIES.
 2) FOR DESIGN CLARITY NOT ALL PROPOSED FUTURE TRACKS
 (BY OTHERS) ARE SHOWN.
 3) CULVERT INLET AND OUTLET PROTECTION NOT SHOWN.
 SEE EROSION CONTROL PLAN FOR DESIGN DETAILS.

DATE	
BY	
REVISIONS	
NO.	
DATE	
BY	
REVISIONS	
NO.	
DATE	
BY	
REVISIONS	
NO.	

DATE	
BY	
REVISIONS	
NO.	
DATE	
BY	
REVISIONS	
NO.	
DATE	
BY	
REVISIONS	
NO.	



150 140 130 120 110 100 90 80 70 60 50 40 30 20 10 0 10 20 30 40 50 60 70 80 90 100 110 120 130 140 150

FILE NAME = ... \D160N06-SHT-XSC-Rail.dgn	USER NAME = nmatern	DESIGNED - NMR	REVISED -	STATE OF ILLINOIS DEPARTMENT OF TRANSPORTATION	CANADIAN PACIFIC RAILWAY CROSS SECTIONS			F.A.U. RTE. 1321	SECTION 2010-134-T	COUNTY DUPAGE	TOTAL SHEETS 40	SHEET NO. 35
PLOT SCALE = 10,000' / IN.	PLOT DATE = 3/25/2011	DRAWN - NMR	REVISED -		SCALE:	SHEET NO. 5 OF 10 SHEETS	STA. 10285+00.00 TO STA. 10287+00.00	CONTRACT NO. 60N06				
		CHECKED - LGP	REVISED -		ILLINOIS FED. AID PROJECT							
		DATE - 03/17/2011	REVISED -									