

STATE OF ILLINOIS
DEPARTMENT OF TRANSPORTATION
DIVISION OF HIGHWAYS

**PROPOSED
HIGHWAY PLANS**

FAP ROUTE 372 (IL 171 - 1ST AVE. FRONTAGE RD.)

JOLIET RD. TO 47TH ST.

SECTION 2010-155-RS

RESURFACING (3P)

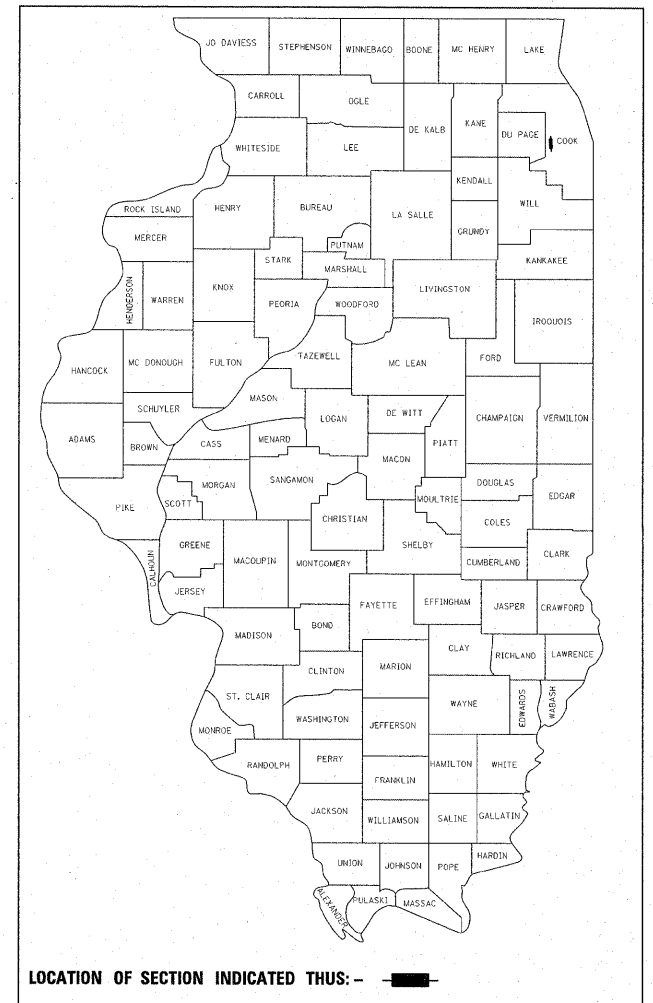
PROJECT: F-0372 (010)

COOK COUNTY

C-91-329-11

F.A.P. RTE.	SECTION	COUNTY	TOTAL SHEETS	SHEET NO.
372	2010-155-RS	COOK	27	1
		ILLINOIS	CONTRACT NO. 60N59	

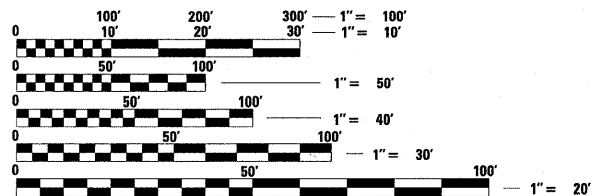
D-91-329-11



FOR INDEX OF SHEETS, SEE SHEET NO. 2

THIS PROJECT IS LOCATED
IN THE VILLAGES OF
McCOOK AND LYONS

TRAFFIC DATA:
2010 ADT = 3,450
SPEED LIMIT = 30 - 40 MPH

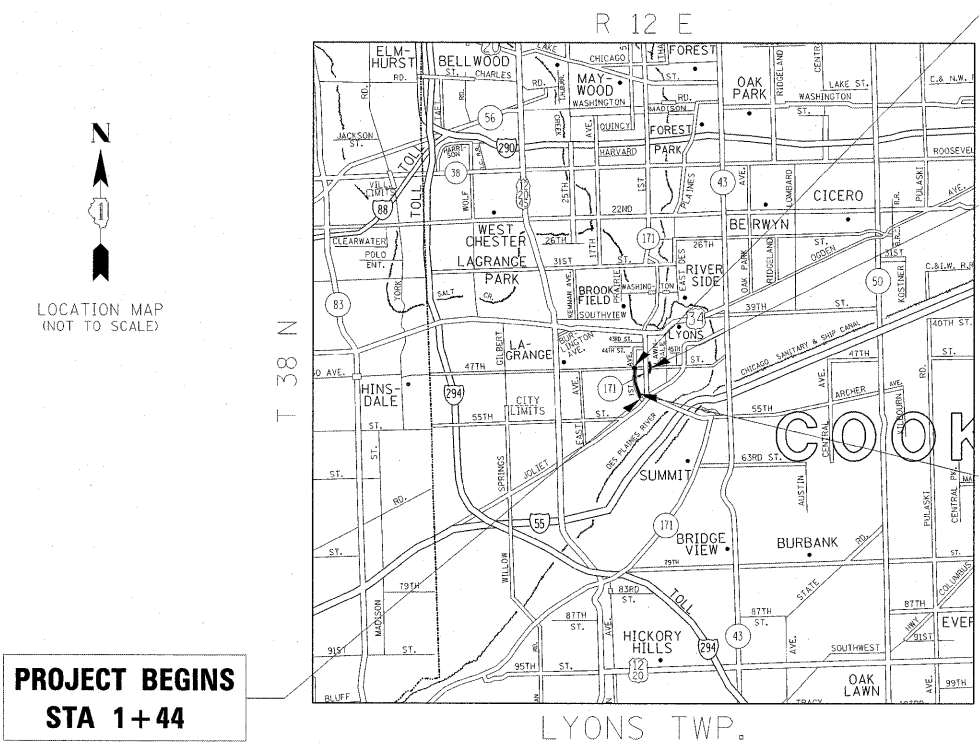


FULL SIZE PLANS HAVE BEEN PREPARED USING STANDARD ENGINEERING SCALES. REDUCED SIZED PLANS WILL NOT CONFORM TO STANDARD SCALES. IN MAKING MEASUREMENTS ON REDUCED PLANS, THE ABOVE SCALES MAY BE USED.

J.U.L.I.E.
JOINT UTILITY LOCATION INFORMATION FOR EXCAVATION
1-800-892-0123
OR 811

PROJECT ENGINEER: DAN WILGREEN (847) 705-4240
PROJECT MANAGER: KEN ENG (847) 705-4247

CONTRACT NO. 60N59



PROJECT ENDS
STA 31+02

IL 171 NB ENTR RAMP:
STA 10+00 TO STA 17+37
IL 171 NB EXIT RAMP:
STA 17+22 TO STA 24+50

OMISSION AT RR CROSSING
STA 3+13 TO STA 3+53

PROJECT BEGINS
STA 1+44

GROSS LENGTH = 4,423 FT. = 0.838 MILE
NET LENGTH = 4,383 FT. = 0.830 MILE

STATE OF ILLINOIS
DEPARTMENT OF TRANSPORTATION
DIVISION OF HIGHWAYS

SUBMITTED April 6, 20 11

Diane M. O'Keefe DEPUTY DIRECTOR OF HIGHWAYS, REGION ENGINEER

May 13 20 11

Scott E. Stitt, P.E. acting ENGINEER OF DESIGN AND ENVIRONMENT

May 13 20 11

Christine M. Reed DIRECTOR OF HIGHWAYS, CHIEF ENGINEER

**PRINTED BY THE AUTHORITY
OF THE STATE OF ILLINOIS**