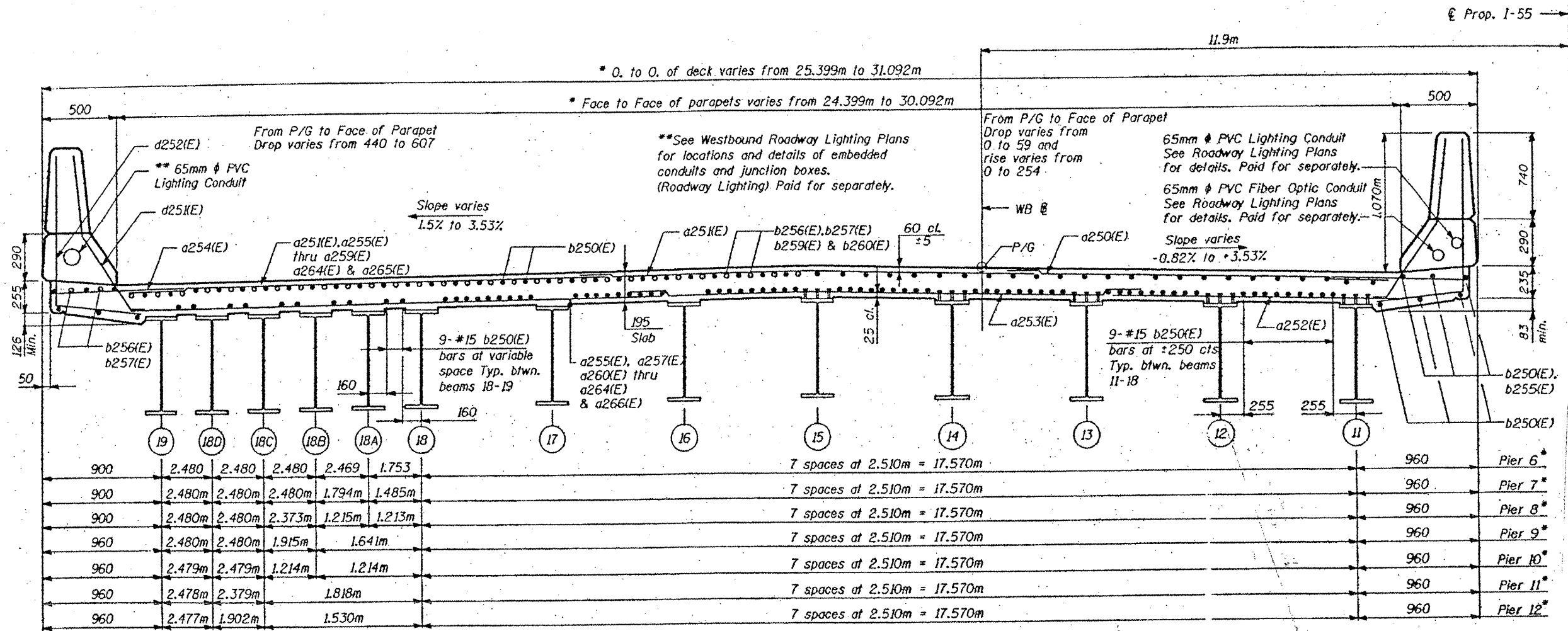


ROUTE	SECTION	COUNTY	TOTAL SHEETS	SHEET NUMBER
FAI 55	2011-016-I	COOK	173	97

CONTRACT NO. 60P07

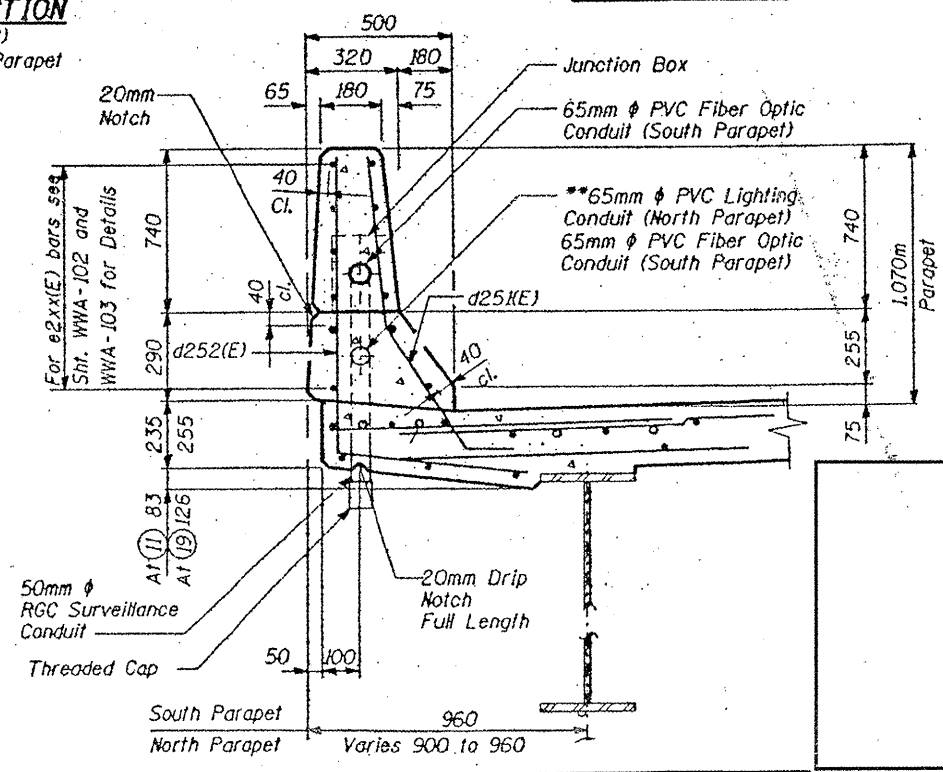


NEAR PIER

CROSS SECTION (looking East)

Exit Ramp Parapet not shown

NEAR MIDSPAN



PARAPET SECTION

FOR INFORMATION ONLY

ILLINOIS DEPARTMENT OF TRANSPORTATION EXISTING PLANS

LOCATION 18 (SN 016-1083) (WB BRIDGE) SHEET 7 OF 21