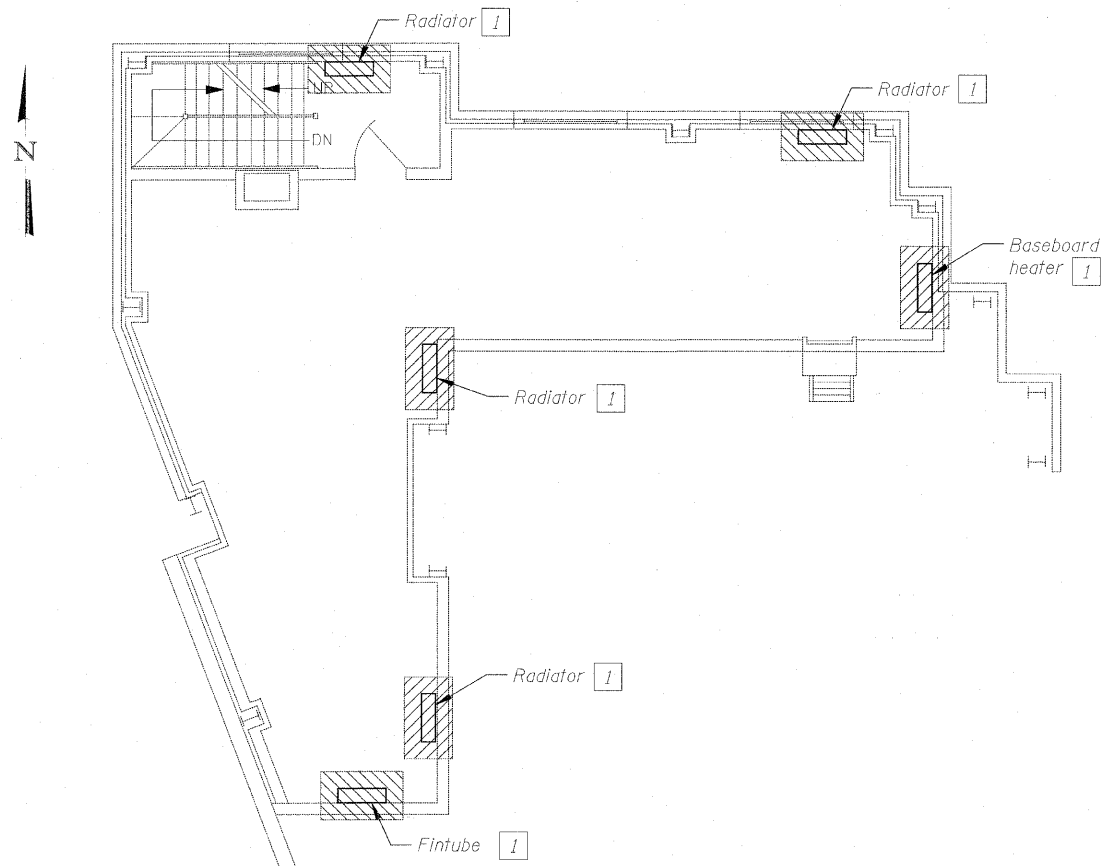
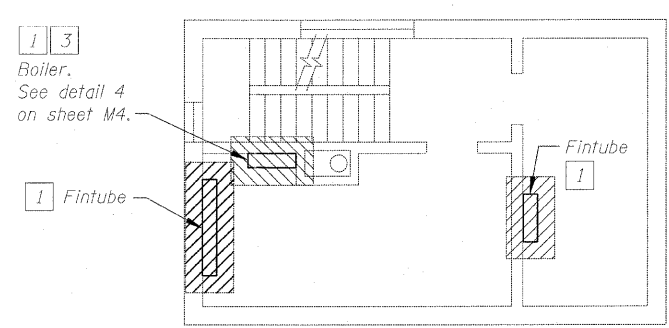


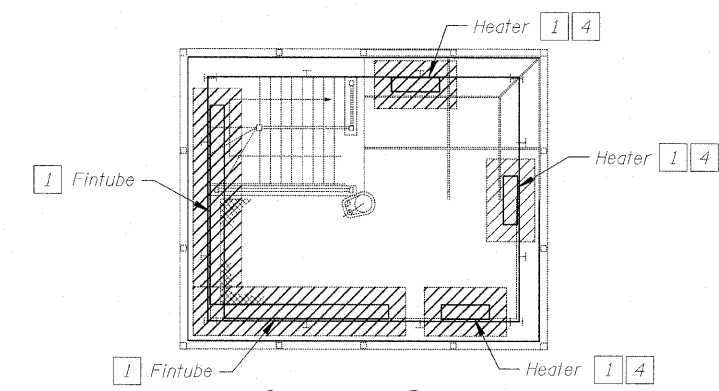
Electrical Control Room
West Control House
1st Floor Demolition



Electrical Control Room
West Control House
2nd Floor Demolition



Toilet Room / Mechanical Room
West Control House
3rd Floor Demolition



Operator's Room
West Control House
4th Floor Demolition

Sheet Notes:

1. See sheet 2 for general demolition notes.
2. Cost of demolition, removal and disposal of all items indicated is included in the cost of HVAC Demolition (Mechanical and Electrical).

Sheet Key Notes:

- 1 Remove equipment with related controls. Remove all exposed related piping. Abandon piping in wall.
- 2 Existing to remain.
- 3 Remove conduit back to nearest j-box. remove wire back to source.
- 4 Frame openings with 3 5/8" metal studs at 16" on center where existing unit heaters are removed. Apply surface finish and texture to match existing finish adjacent to unit heaters (paint to match). Provide 4" vinyl base (black in color) in entire space.
- 5 Cap boiler flu (vent) below roof. The cost of this item is included in the cost of HVAC Demolition (Mechanical and Electrical).

T:\16843A-CongressParkwayBridge\Drawings\0162445-60P18-FSR-063MED1.dgn 3/25/2011 6:52:31 PM

PB Americas, Inc.
230 WEST MONROE STREET,
SUITE 900
CHICAGO, ILL. 60606
3121782-8150

USER NAME	kienstra
DESIGNED	S. KALYONCU
CHECKED	K. TELLA
DRAWN	E. KIENSTRA
CHECKED	K. TELLA
REVISIONS	
PLLOT SCALE	
PLLOT DATE	3/25/2011

DESIGNED	S. KALYONCU	REVISED	
CHECKED	K. TELLA	REVISED	
DRAWN	E. KIENSTRA	REVISED	
CHECKED	K. TELLA	REVISED	

STATE OF ILLINOIS
DEPARTMENT OF TRANSPORTATION

WEST CONTROL HOUSE
DEMOLITION FLOOR PLANS
FOR STRUCTURE NO. 016-2445

SHEET NO. MED1 OF MED2 SHEETS

F.A.P. RTE.	SECTION	COUNTY	TOTAL SHEETS	SHEET NO.
389	2424.2B-1-2	COOK	14	5
CONTRACT NO. 60P18				
FED. ROAD DIST. NO. 7 (ILLINOIS) FED. AID PROJECT				