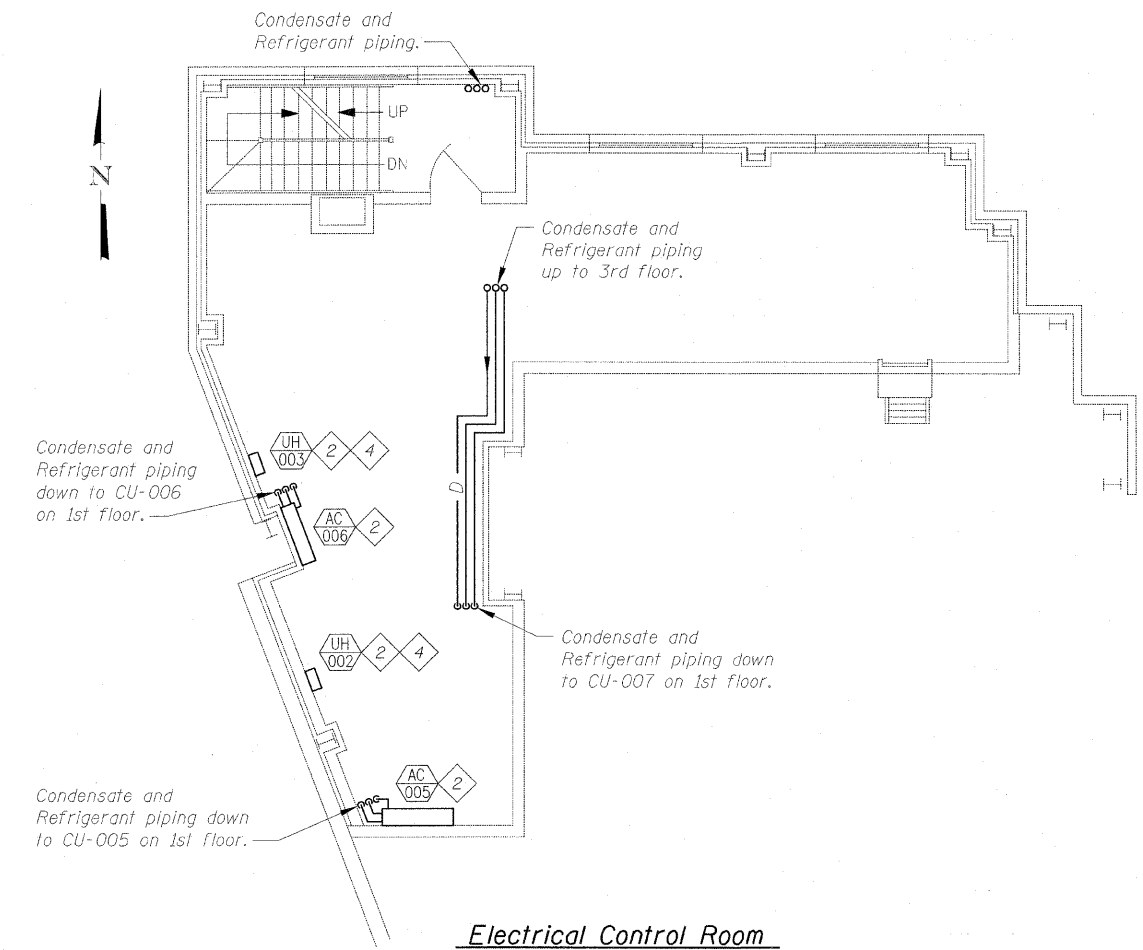
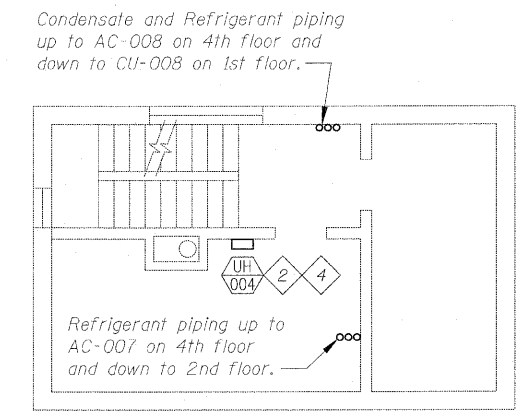


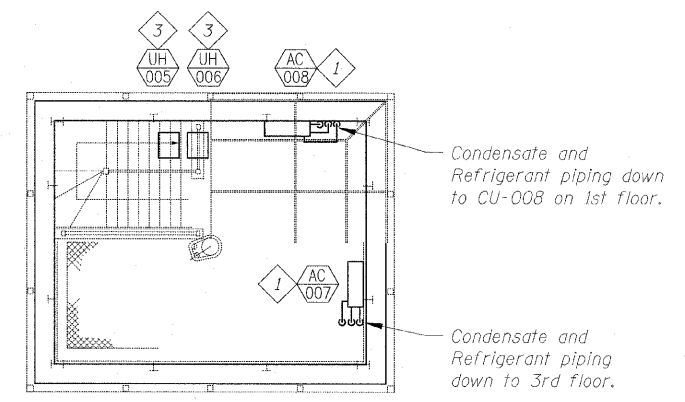
**Electrical Control Room
West Control House
1st Floor**



**Electrical Control Room
West Control House
2nd Floor**



**Toilet Room / Mechanical Room
West Control House
3rd Floor**



**Operator's Room
West Control House
4th Floor**

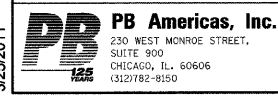
Sheet Notes:

1. Mechanical equipment locations to be coordinated with electrical equipment locations.
2. Size refrigerant piping per manufacturer's recommendations.
3. Cost of all AC and CU units and all piping is included in the cost of the Split System Air Conditioner.
4. Cost of all UH and CUH is included in the cost of the Unit Heaters.

Sheet Key Notes:

- 1 Bottom of Equipment (BOE) = 0'-2" AFF
- 2 BOE = 6'-0" AFF
- 3 Ceiling mounted vertical discharge.
- 4 Horizontal discharge.
- 5 Install on 6" concrete slab. Secure condensing unit using Series I cage by Property Armor (www.propertyarmor.net) or equal. The cost of this item is included in the cost of the Split System Air Conditioner.
- 6 Extend condensate drain to nearest floor drain. The cost of this item is included in the cost of the Split System Air Conditioner.

T:\116843A-CongressParkwayBridge\Drawings\0162445-60P-18-FSR-063M1.dgn
3/25/2011 6:53:17 PM



USER NAME	kienstra	DESIGNED	S. KALYONCU	REVISED	
		CHECKED	K. TELLA	REVISED	
		DRAWN	E. KIENSTRA	REVISED	
		CHECKED	K. TELLA	REVISED	
PLOT SCALE					
PLOT DATE	3/25/2011				

**STATE OF ILLINOIS
DEPARTMENT OF TRANSPORTATION**

**WEST CONTROL HOUSE RENOVATION
FLOOR PLANS
FOR STRUCTURE NO. 016-2445**
SHEET NO. M1 OF M4 SHEETS

F.A.P. RTE.	SECTION	COUNTY	TOTAL SHEETS	SHEET NO.
389	2424.2B-1-2	COOK	14	7
FED. ROAD DIST. NO. 7 [ILLINOIS] FED. AID PROJECT			CONTRACT NO. 60P18	