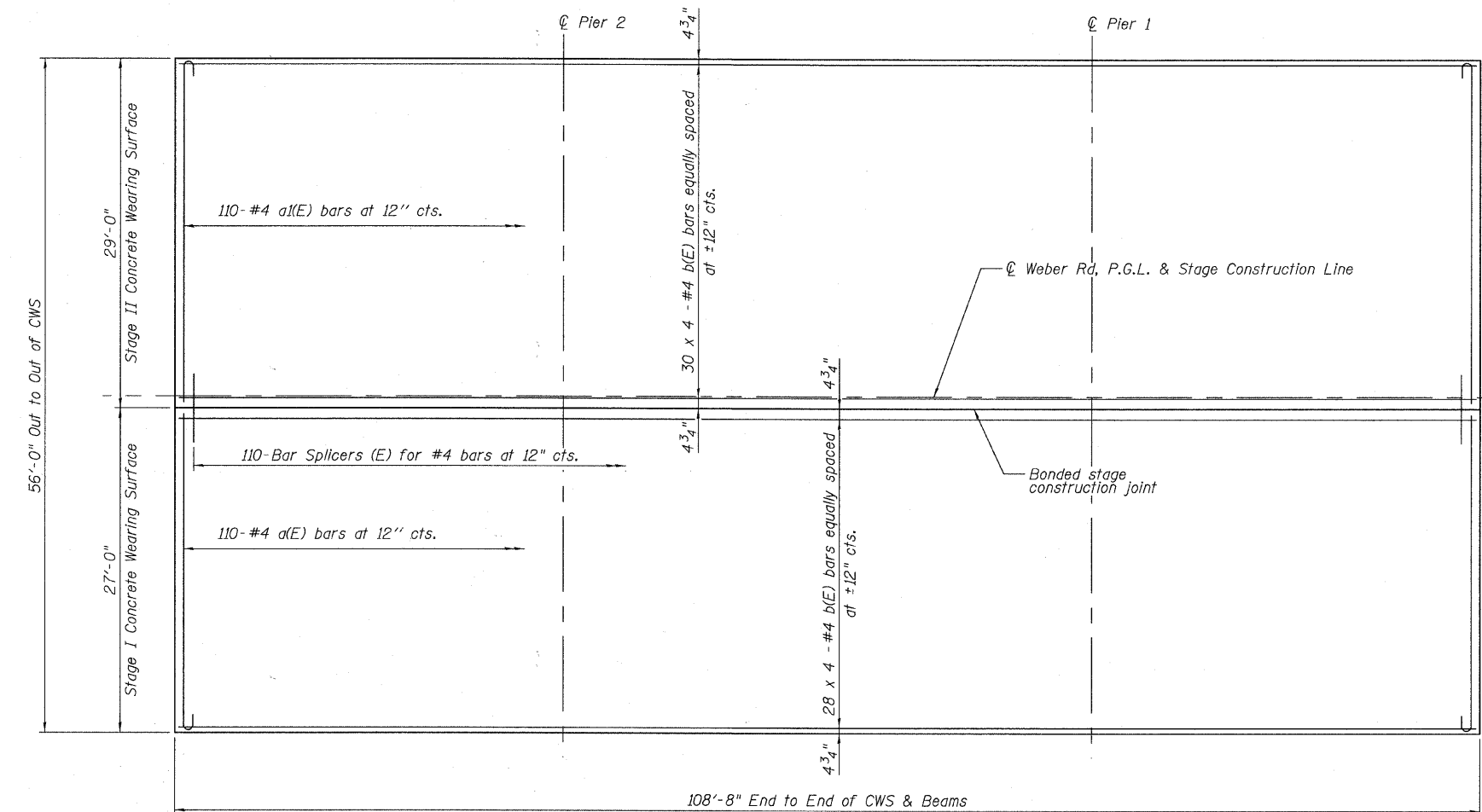
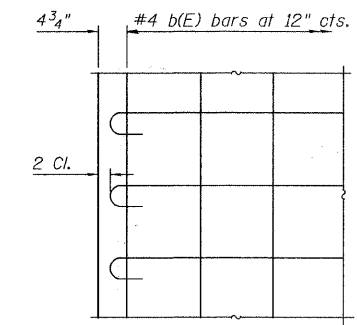


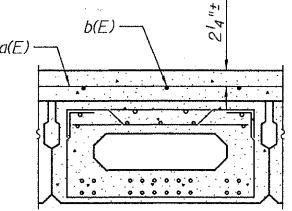
STATE OF ILLINOIS
DEPARTMENT OF TRANSPORTATION



Bars indicated thus 1 x 2#4 etc. indicates
1 line of bars with 2 lengths per line.



PLAN

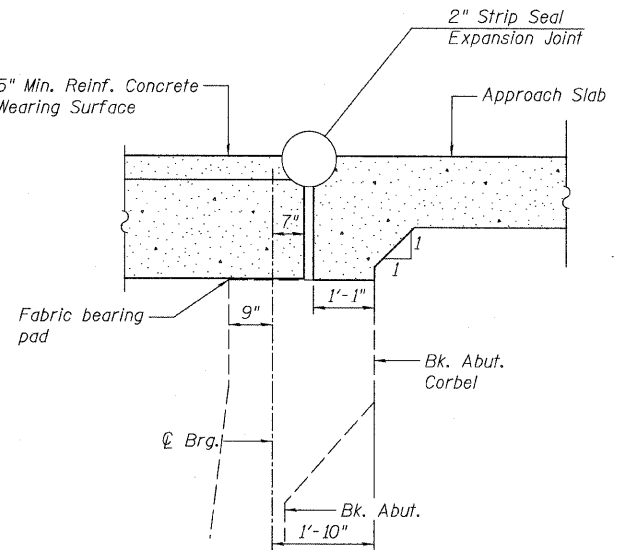


CROSS SECTION

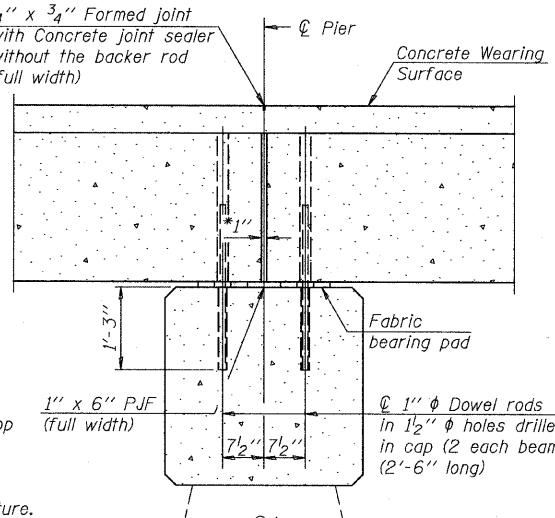
REINFORCED CONCRETE WEARING
SURFACE DETAILS

MINIMUM BAR LAP

#4 bar = 2'-0"

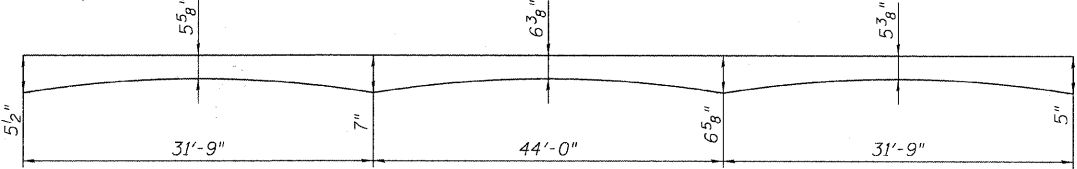


SECTION THRU EXISTING ABUTMENT



SECTION AT PIERS

- Notes:
1. After beams have been erected, holes shall be drilled into substructure and anchor dowels placed. Dowel holes shall be filled with non-shrink grout to top of beam and allowed to cure min. 24 hrs. prior to grouting the shear keys.
 2. All horizontal dimensions are at right angles to beam ends.
 3. Hatched area to be poured after Precast Prestressed Concrete Deck Beams have been erected. Quantity of concrete included with Concrete Superstructure.
 4. See Sheets S-8 thru S-11 for beam & bearing pad details.
 5. See Sheet S-6 for superstructure details and Bill of Material.
 6. See Sheet S-18 for bar splicer assembly details.
 7. See Sheet S-6 for strip seal joint details.
 8. Existing Dowel Rods shall be cut flush with the top of pier cap. After beams have been erected, holes shall be drilled into substructure and anchor dowels placed.

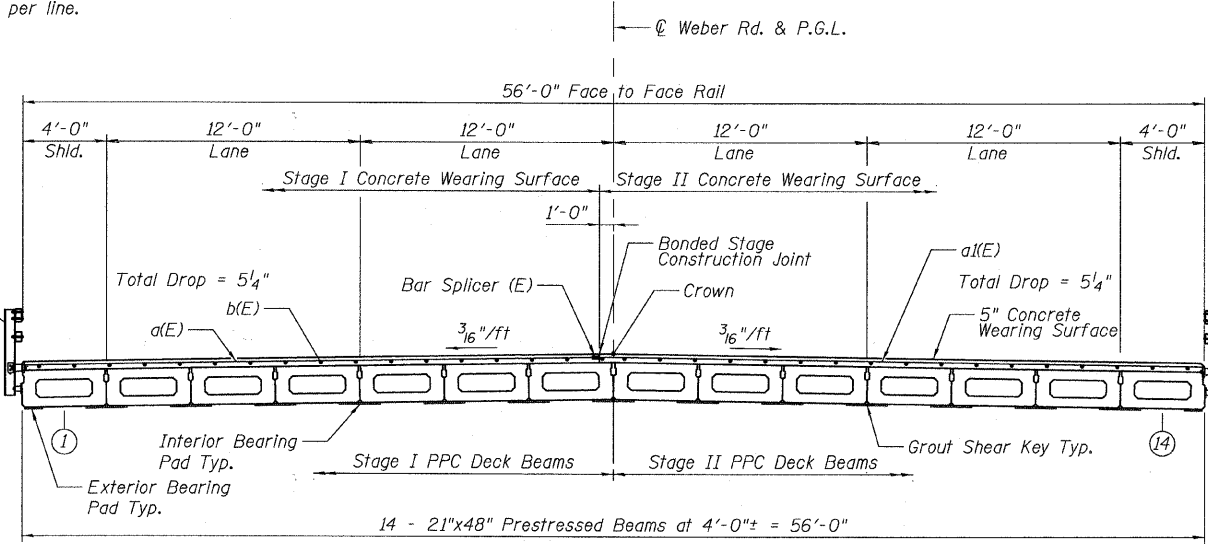


APPROX. REINFORCED CONCRETE WEARING SURFACE PROFILE

(For information only)

DECK PLAN & SECTION

STRUCTURE NO. 099-3322



CROSS SECTION

(Looking North)

Note

Typical Construction Staging Section(s) sheet S-2.
The Concrete Wearing Surface shall be poured
after the beams have been erected and the shear
keys have been grouted.

DESIGNED	L. LAWS
CHECKED	J.P.B.
DRAWN	L. LAWS
CHECKED	J.P.B.

URS
100 South Wacker Drive, Suite 500
Chicago, IL 60606
Tel: 312.939.1000
Fax: 312.939.4198

SHEET NO. S-5	F.A.P. RTE.	SECTION	COUNTY	TOTAL SHEETS	SHEET NO.
18 SHEETS	0856	08-00050-00-BR	WILL	26	11
CONTRACT NO. 63576					
FED. ROAD DIST. NO. _ ILLINOIS FED. AID PROJECT					