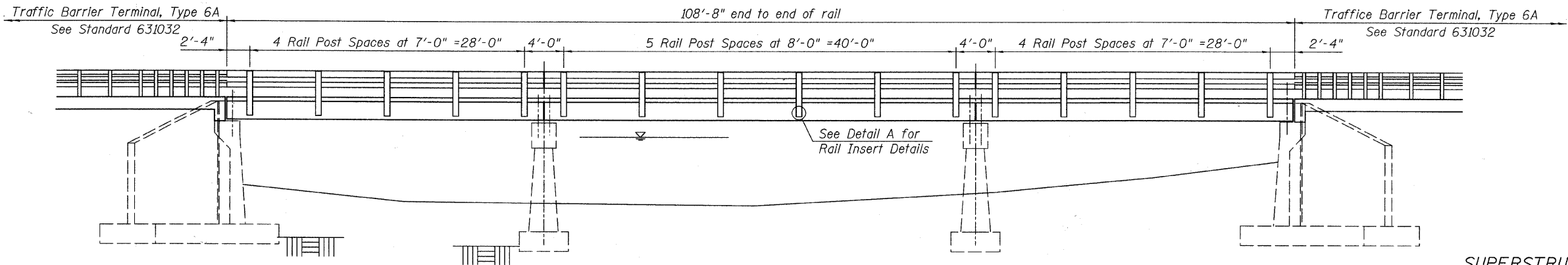
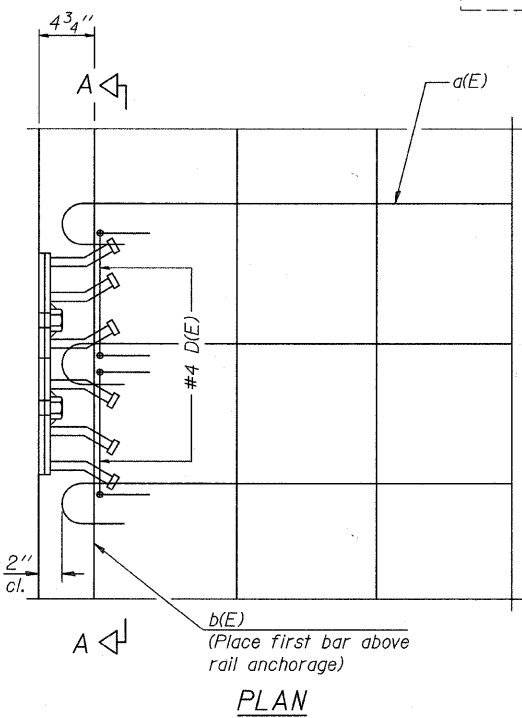


STATE OF ILLINOIS  
DEPARTMENT OF TRANSPORTATION

Note: See sheet 5 for Railing Details

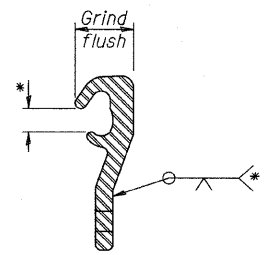
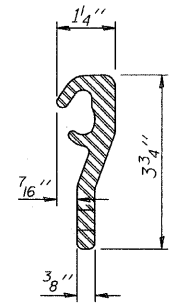
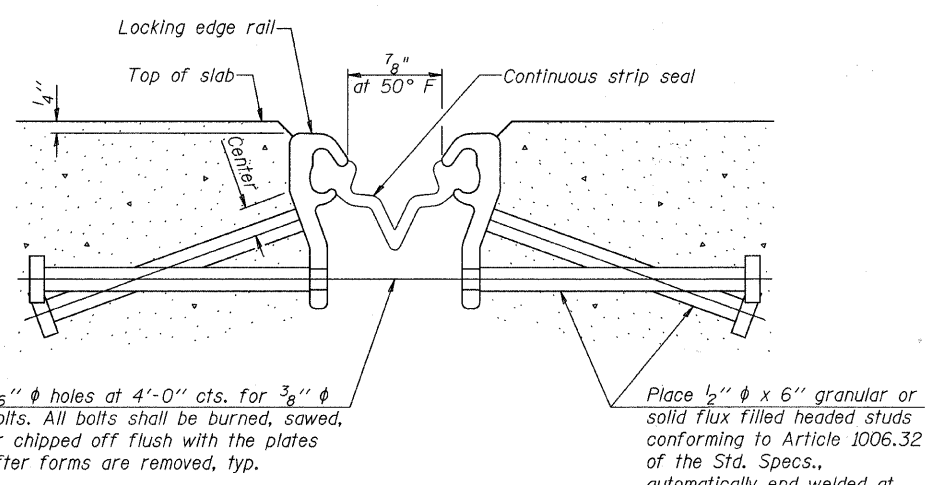
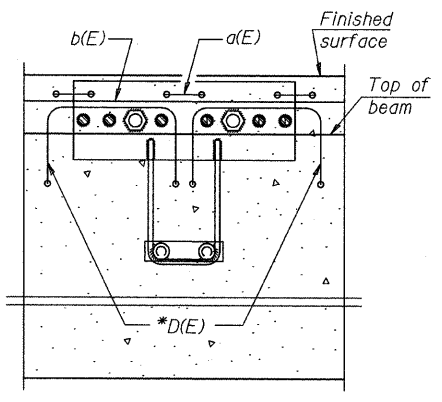
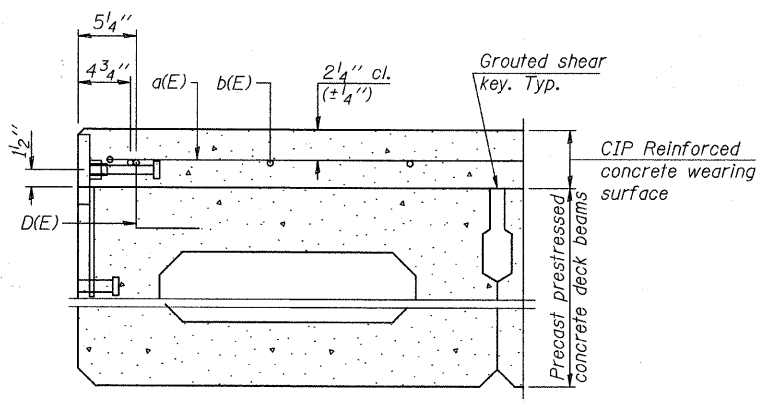


ELEVATION  
Showing Rail Post Spaces

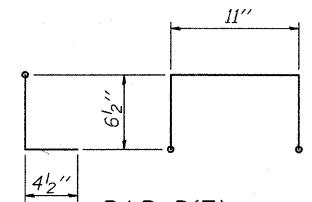


Notes:  
Formwork necessary for the wearing surface may be secured utilizing the bottom rail anchorage inserts and/or additional inserts cast into the beam.

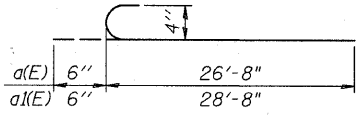
MINIMUM BAR LAP  
#4 bar = 2'-0"



\*Omit weld at seal opening.



\* Place 2-#4 D(E) bars in beam at each post location as shown. D(E) bar included in cost of beam.



Notes:  
The strip seal shall be made continuous and shall have a minimum thickness of 1/4". The configuration of the strip seal shall match the configuration of the Locking Edge Rails.  
The height and thickness of the Locking Edge Rails shown are minimum dimensions. The actual configuration of the Locking Edge Rails and matching strip seal may vary from manufacturer to manufacturer. Flanged edge rails will not be allowed.  
The inside of the Locking Edge Rail groove shall be free of weld residue. Locking Edge Rails may be spliced at slope discontinuities and stage construction joints.  
The manufacturer's recommended installation methods shall be followed.

**URS**  
100 South Wacker Drive, Suite 500  
Chicago, IL 60606  
Tel: 312.939.1000  
Fax: 312.939.4198

SUPERSTRUCTURE  
BILL OF MATERIAL

Bar	No.	Size	Length	Shape
a(E)	110	#4	27'-2"	
a1(E)	110	#4	29'-2"	
b(E)	232	#4	28'-6"	
Reinforcement Bars, Epoxy Coated				Pound 8,560
Bridge Deck Grooving				Sq. Yd. 677
Name Plates				Each 2
Preformed Joint Strip Seal				Foot 112
Protective Coat				Sq. Yd. 677
Bar Splicers				Each 110
Concrete Wearing Surface, 5"				Sq. Yd. 676

DECK PLAN & SECTION DETAILS  
STRUCTURE NO. 099-3322

DESIGNED	L. LAWS
CHECKED	J.P.B.
DRAWN	L. LAWS
CHECKED	J.P.B.

SHEET NO. S-6	F.A.P. RTE.	SECTION	COUNTY	TOTAL SHEETS	SHEET NO.
	0856	08-00050-00-BR	WILL	26	12
CONTRACT NO. 63576					
FED. ROAD DIST. NO. ILLINOIS FED. AID PROJECT					