

STANDARD BAR SPLICER ASSEMBLY

| Minimum Lap Lengths | | | | | |
|------------------------|---------|---------|---------|---------|---------|
| Bar size to be spliced | Table 1 | Table 2 | Table 3 | Table 4 | Table 5 |
| 3, 4 | 1'-5" | 1'-11" | 2'-1" | 2'-4" | 2'-3" |
| 5 | 1'-9" | 2'-5" | 2'-7" | 2'-11" | 2'-10" |
| 6 | 2'-1" | 2'-11" | 3'-1" | 3'-6" | 3'-4" |
| 7 | 2'-9" | 3'-10" | 4'-2" | 4'-8" | 4'-6" |
| 8 | 3'-8" | 5'-1" | 5'-5" | 6'-2" | 5'-10" |
| 9 | 4'-7" | 6'-5" | 6'-10" | 7'-9" | 7'-5" |

Table 1: Black bar, 0.8 Class C

Table 2: Black bar, Top bar lap, 0.8 Class C

Table 3: Epoxy bar, 0.8 Class C

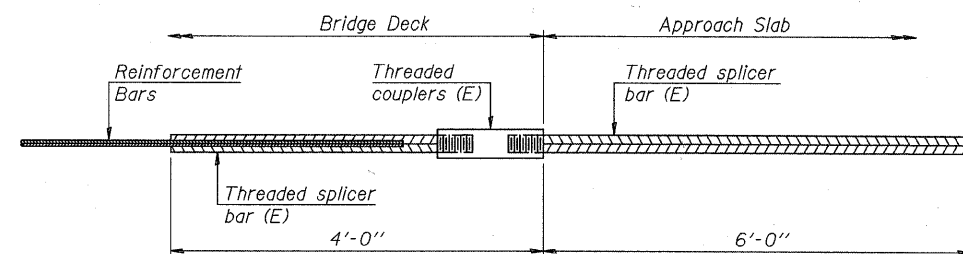
Table 4: Epoxy bar, Top bar lap, 0.8 Class C

Table 5: Epoxy bar, Top bar lap, Class B

Threaded splicer bar length = min. lap length + 1 1/2" + thread length

* Epoxy not required on Bar Splicer Assembly components used in conjunction with black bars.

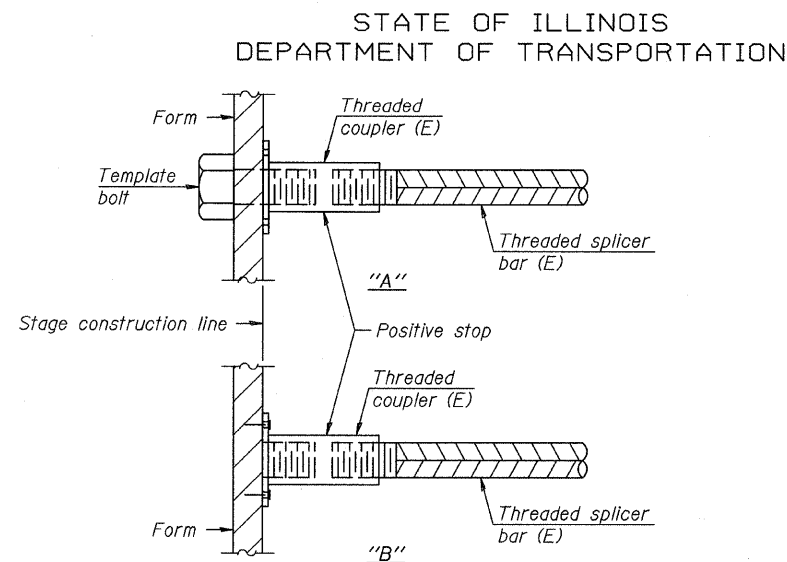
| Location | Bar size | No. assemblies required | Table for minimum lap length |
|---------------------|----------|-------------------------|------------------------------|
| Wearing Surface | #4 | 110 | 4 |
| Approach Slab, Top | #4 | 50 | 4 |
| Approach Slab, Bot. | #5 | 92 | 4 |
| Approach Slab, Ftg. | #5 | 84 | 4 |
| Abutment Bk. Walls | #5 | 8 | 4 |



BAR SPLICER ASSEMBLY FOR #5 BAR ON INTEGRAL OR SEMI-INTEGRAL ABUTMENTS

| | |
|----------|---------|
| DESIGNED | L. LAWS |
| CHECKED | J.P.B. |
| DRAWN | L. LAWS |
| CHECKED | J.P.B. |

No. required =

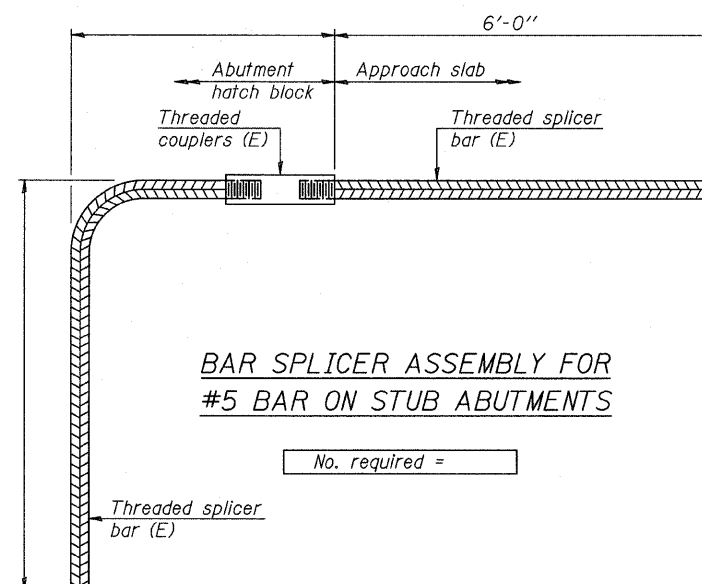


INSTALLATION AND SETTING METHODS

"A" : Set bar splicer assembly by means of a template bolt.

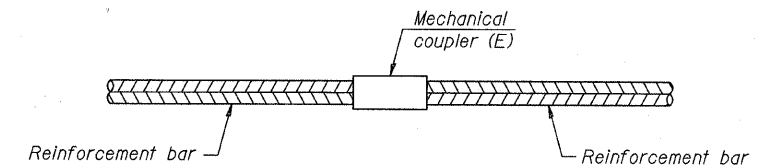
"B" : Set bar splicer assembly by nailing to wood forms or cementing to steel forms.

(E) : Indicates epoxy coating.



BAR SPLICER ASSEMBLY FOR #5 BAR ON STUB ABUTMENTS

No. required =



STANDARD MECHANICAL SPLICER

| Location | Bar size | No. assemblies required |
|----------|----------|-------------------------|
| | | |
| | | |
| | | |
| | | |

NOTES

Splicer bars shall be deformed with threaded ends and have a minimum 60 ksi yield strength.

All reinforcement shall be lapped and tied to the splicer bars.

Bar splicer assemblies shall be epoxy coated according to the requirements for reinforcement bars. See Section 508 of the Standard Specifications.

See special provision for Mechanical Splicers.

See approved list of bar splicer assemblies and mechanical splicers for alternatives.

BAR SPLICER ASSEMBLY AND MECHANICAL SPLICER DETAILS
STRUCTURE NO. 099-3322

URS
100 South Wacker Drive, Suite 500
Chicago, IL 60606
Tel: 312.939.1000
Fax: 312.939.4198

| | | | | | | |
|---------------------------------|-----------------------|----------------|----------|--------------------|-----------------|--------------|
| SHEET NO. S-18 18 SHEETS | F.A.P. RTE. | SECTION | | COUNTY | TOTAL SHEETS | SHEET NO. |
| | 0856 | 08-00050-00-BR | | WILL | 26 | 24 |
| | | | | CONTRACT NO. 63576 | | |
| | FED. ROAD DIST. NO. _ | | ILLINOIS | FED. AID PROJECT | | |