

STATE OF ILLINOIS
DEPARTMENT OF TRANSPORTATION
DIVISION OF HIGHWAYS

PLANS FOR PROPOSED
FEDERAL AID HIGHWAY

CENTRAL AVENUE
OVER THE WEST FORK, NORTH BRANCH CHICAGO RIVER
BRIDGE RECONSTRUCTION
SECTION 09-00085-00-BR
PROJECT BROS-9003 (298)
VILLAGE OF DEERFIELD
LAKE COUNTY, ILLINOIS
JOB C-91-513-09

F.A.U. RTE.	SECTION	COUNTY	TOTAL SHEETS	SHEET NO.
09-00085-00-BR		LAKE	22	1

CONTRACT NO. 63584

INDEX OF SHEETS

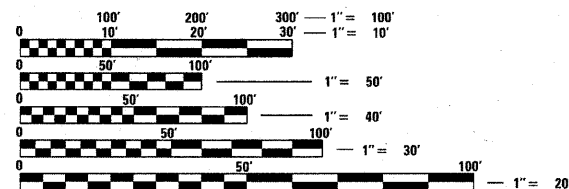
SHEET	DESCRIPTION
1	COVER SHEET
2	GENERAL NOTES AND STATE STANDARDS
3	SUMMARY OF QUANTITIES
4	TYPICAL SECTIONS
5	ROADWAY PLAN AND PROFILE
6	TRAFFIC CONTROL AND DETOUR PLAN
7	EROSION CONTROL AND LANDSCAPE PLAN
8	DRAINAGE AND UTILITY PLAN
9-19	BRIDGE STRUCTURE PLANS AND DETAILS
20	BORING LOGS
21-22	CONSTRUCTION DETAILS

PROJECT LOCATED IN
VILLAGE OF DEERFIELD

PROPOSED IMPROVEMENT: NEW CONSTRUCTION AND RECONSTRUCTION OF HOT-MIX ASPHALT ROADWAY PAVEMENT, BRIDGE AND BRIDGE APPROACH PAVEMENT CONSTRUCTION, STORM SEWER, LANDSCAPING, AND EROSION CONTROL.

TRAFFIC DATA
ADT (2009) = 309
POSTED SPEED = 25 MPH

DESIGN DESIGNATION
FUNCTIONAL CLASSIFICATION = LOCAL
ADT (2030) ADT = 1,000

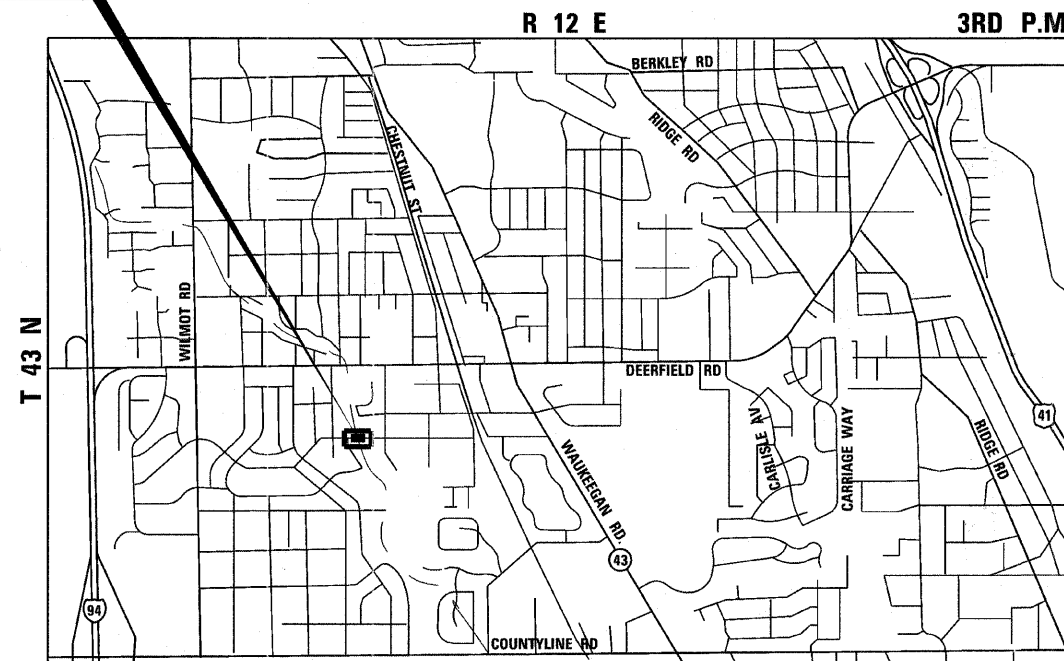


FULL SIZE PLANS HAVE BEEN PREPARED USING STANDARD ENGINEERING SCALES. REDUCED SIZED PLANS WILL NOT CONFORM TO STANDARD SCALES. IN MAKING MEASUREMENTS ON REDUCED PLANS, THE ABOVE SCALES MAY BE USED.

J.U.L.I.E.
JOINT UTILITY LOCATION INFORMATION FOR EXCAVATION
1-800-892-0123 OR 811

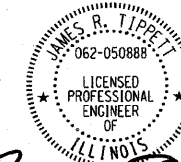
CONTRACT NO. 63584

CENTRAL STREET BRIDGE
STA. 0+71.11 TO STA. 2+56.11
STRUCTURE NO. 049-6154
W. FORK, N. BRANCH OF
THE CHICAGO RIVER

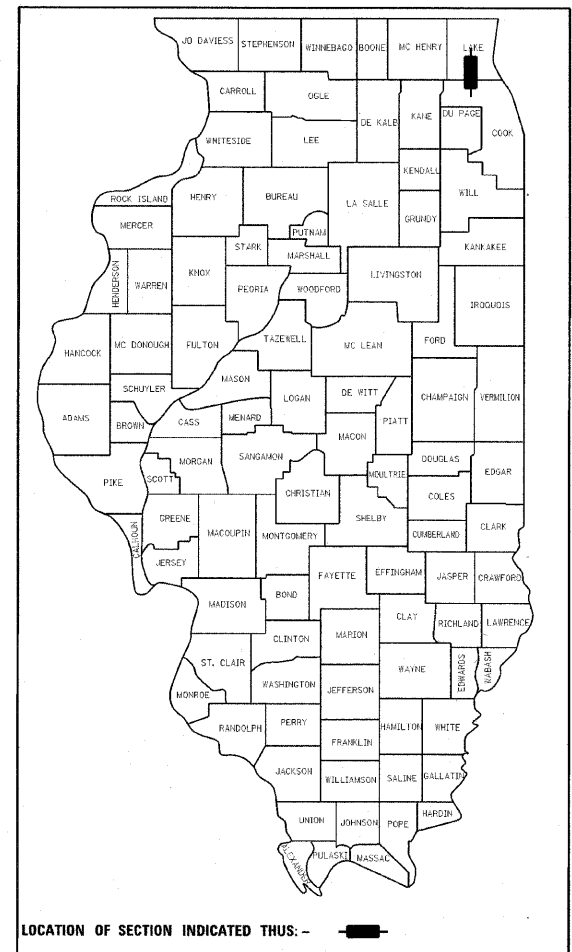


LOCATION MAP
NOT TO SCALE

TOTAL GROSS LENGTH OF PROJECT	185 FT (0.035 MILES)
TOTAL NET LENGTH OF PROJECT	185 FT (0.035 MILES)



James R. Tippet
DATE: 3-18-11
EXPIRES: NOVEMBER 30, 2011



STATE OF ILLINOIS
DEPARTMENT OF TRANSPORTATION
DIVISION OF HIGHWAYS

Approved MARCH 28 2011
Robert Phillip
VILLAGE OF DEERFIELD

Passed APRIL 13 2011
C. Hecht
DISTRICT 1 ENGINEER OF LOCAL ROADS AND STREETS

Releasing for Bid
Based on Limited
Review APRIL 13 2011
Diane M. O'Keefe
DEPUTY DIRECTOR OF HIGHWAYS, REGION 1 ENGINEER

PRINTED BY THE AUTHORITY
OF THE STATE OF ILLINOIS

PLANS PREPARED BY:
URS 100 S. WACKER DR., SUITE 500 TEL (312)-939-1000
CHICAGO IL, 60606 FAX (312)-939-4198

PROGRAM AND OFFICE ENGINEER: CHARLES F. RIDDLE, P.E. 847-705-4406 SCHAUMBURG, IL