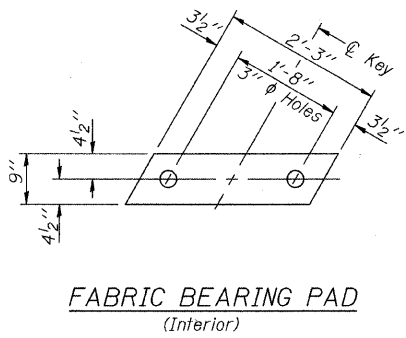
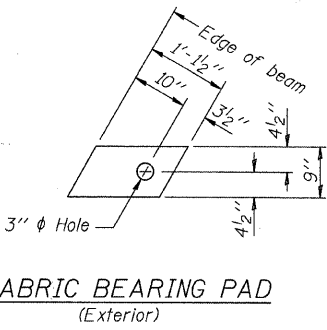


STATE OF ILLINOIS  
DEPARTMENT OF TRANSPORTATION



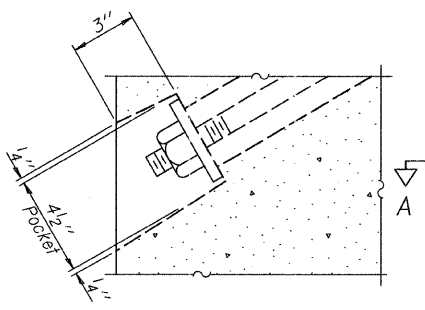
FABRIC BEARING PAD  
(Interior)



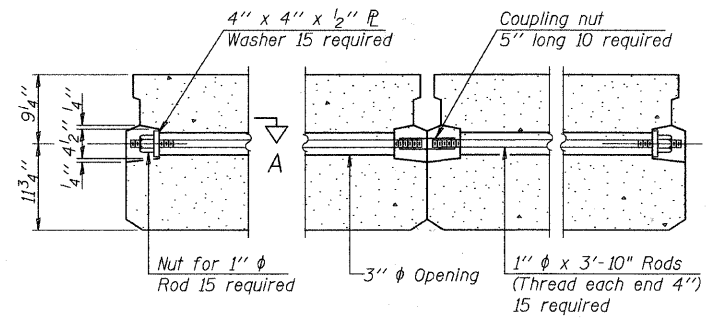
FABRIC BEARING PAD  
(Exterior)

Notes:  
All bearing pads shall be 1" thick.

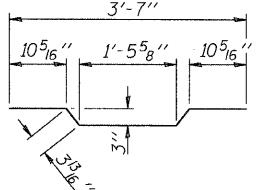
FIXED



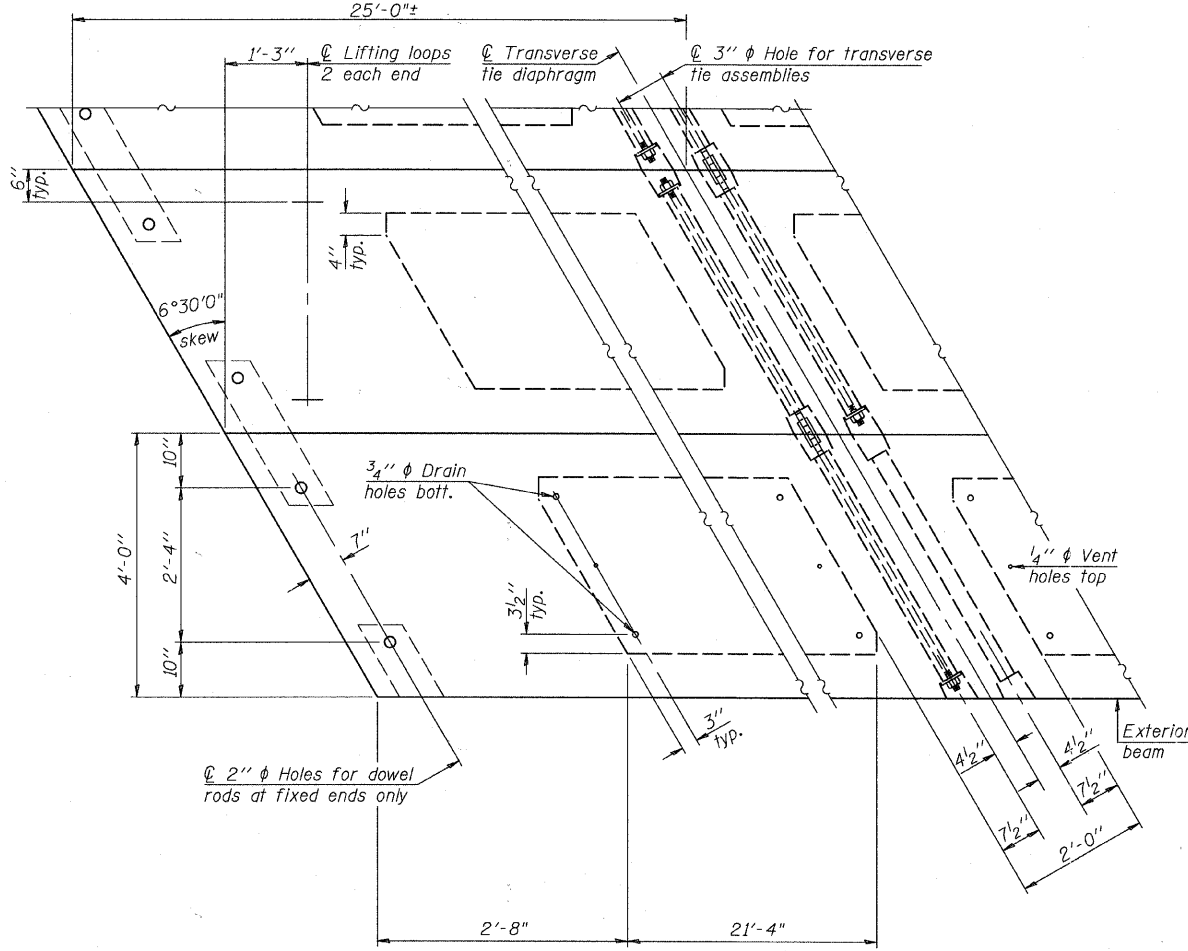
SECTION A-A



TYPICAL TRANSVERSE TIE ASSEMBLY



BAR A1(E)



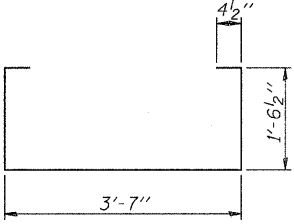
PLAN VIEW

NOTES

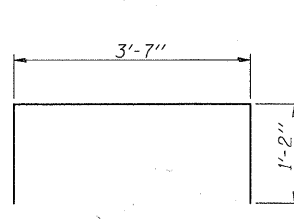
Prestressing steel shall be uncoated high strength, low relaxation 7-wire strand, Grade 270. The nominal diameter shall be 1/2" and the nominal cross-sectional area shall be 0.153 sq. in. The 1" phi rods in the transverse tie assembly shall be tightened to a snug fit and the threads set. Pockets on exterior faces of bridge shall be filled with grout after transverse tie assembly is in place.  
Reinforcement bars shall conform to ASTM A 706, Grade 60. (See Special Provisions).  
Two 1/8" fabric adjusting shims of the dimensions of the exterior bearing pad shall be provided for each bearing pad location.  
A minimum 2 1/2" phi lifting pin shall be used to engage the lifting loops during handling.  
Corrosion Inhibitor, per Article 1020.05(b)(12) and 1021.05 of the Standard Specifications, shall be used in the concrete for precast prestressed concrete deck beams.  
Compressive strength of prestressed concrete, f'c, shall be 6000 psi.  
Compressive strength of prestressed concrete at release, f'ci, shall be 5000 psi.

Note: Connect beams in pairs with the transverse tie configuration shown.

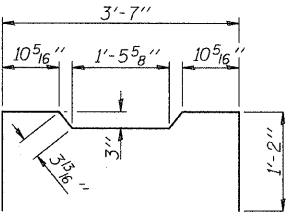
DESIGNED	DYS
CHECKED	JPB
DRAWN	DYS
CHECKED	JPB



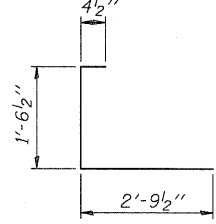
BAR S(E)



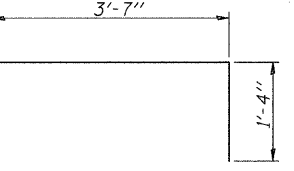
BAR S1(E)



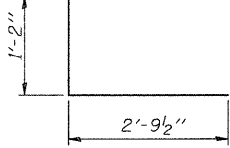
BAR S2(E)



BAR S3(E)



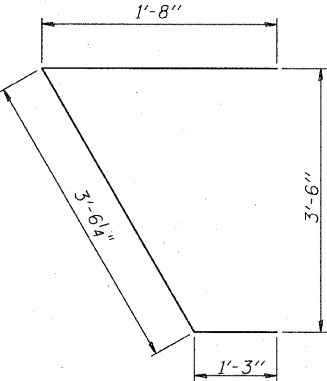
BAR D(E)



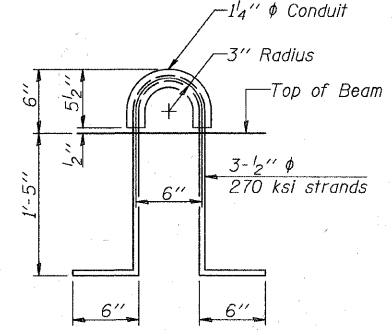
BAR S4(E)



BAR U(E)



BAR U1(E)

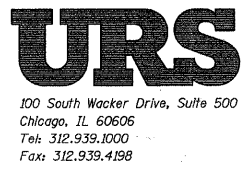


LIFTING LOOP DETAIL

BILL OF MATERIAL

* Precast Prestressed Conc. Deck Bms. (21" depth)	Sq. Ft.	2,000
* See Special Provisions		

SUPERSTRUCTURE  
21"x48" PPC DECK BEAM DETAILS  
STRUCTURE NO. 049-6161



SHEET NO. S-6 12 SHEETS	F.A.U. RTE.	SECTION 09-00085-00-BR	COUNTY LAKE	TOTAL SHEETS 22	SHEET NO. 14
	CONTRACT NO. 63584				
FED. ROAD DIST. NO. - ILLINOIS FED. AID PROJECT					