

F.A.U. RTE.	SECTION	COUNTY	TOTAL SHEETS	SHEET NO.
2659	11-00177-00-RS	DUPAGE	21	1
CONTRACT NO.			63585	

INDEX OF SHEETS

- 1 COVER SHEET AND INDEX OF SHEETS
- 2 GENERAL NOTES AND HIGHWAY STANDARDS
- 3 SUMMARY OF QUANTITIES
- 4 TYPICAL SECTIONS
- 5-7 IMPROVEMENT PLANS
- 8-10 PAVEMENT MARKING PLANS
- 11 BD-01 DRIVEWAY DETAILS DISTANCE BETWEEN ROW AND FACE OF CURB AND EDGE OF SHOULDER >=15'
- 12 BD-02 DRIVEWAY DETAILS DISTANCE BETWEEN ROW AND FACE OF CURB <=15'
- 13 BD-08 DETAILS FOR FRAMES AND LIDS ADJUSTMENT WITH MILLING
- 14 BD-22 PAVEMENT PATCHING FOR HMA SURFACED PAVEMENT
- 15 BD-32 BUTT JOINT AND HMA TAPER DETAILS
- 16 TC-10 TRAFFIC CONTROL AND PROTECTION FOR SIDE ROADS, INTERSECTIONS AND DRIVEWAYS
- 17 TC-13 DISTRICT ONE TYPICAL PAVEMENT MARKINGS
- 18 TC-16 PAVEMENT MARKING LETTERS AND SYMBOLS FOR TRAFFIC STAGING
- 19 TC-22 ARTERIAL ROAD INFORMATION SIGN
- 20 TC-26 DRIVEWAY ENTRANCE SIGNING
- 21 TS-07 DISTRICT ONE DETECTOR LOOP INSTALLATION DETAILS FOR ROADWAY RESURFACING

FOR INDEX OF HIGHWAY STANDARDS, SEE SHEET NO. 2

TRAFFIC DATA

ADT:
WEST AVENUE 5,800 VPD (2009) 7,000 VPD (2030)

POSTED SPEED DESIGN SPEED

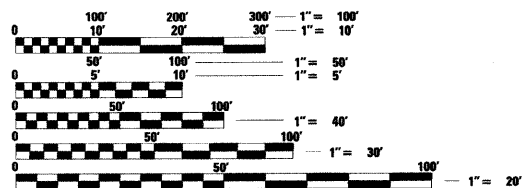
25 MPH (EXISTING) 35 MPH (EXISTING)
25 MPH (PROPOSED) 35 MPH (PROPOSED)

DESIGN DESIGNATION: 5,900 (2011) COLLECTOR 0.17 (RS)

PROJECT IS LOCATED IN THE CITY OF ELMHURST

DESCRIPTION OF IMPROVEMENT

THIS IMPROVEMENT CONSISTS OF A VARIABLE DEPTH MILL AND OVERLAY, REMOVING AND REPLACING DETERIORATED PORTIONS OF CURB AND GUTTER AND SIDEWALKS, INSTALLATION OF NEW SIDEWALK, PAVEMENT PATCHING, STRUCTURE ADJUSTMENTS OR RECONSTRUCTION, STRIPING, AND ALL INCIDENTAL AND COLLATERAL WORK AS NECESSARY TO COMPLETE THE IMPROVEMENT SHOWN HEREIN AND AS DESCRIBED IN THE SPECIFICATIONS.

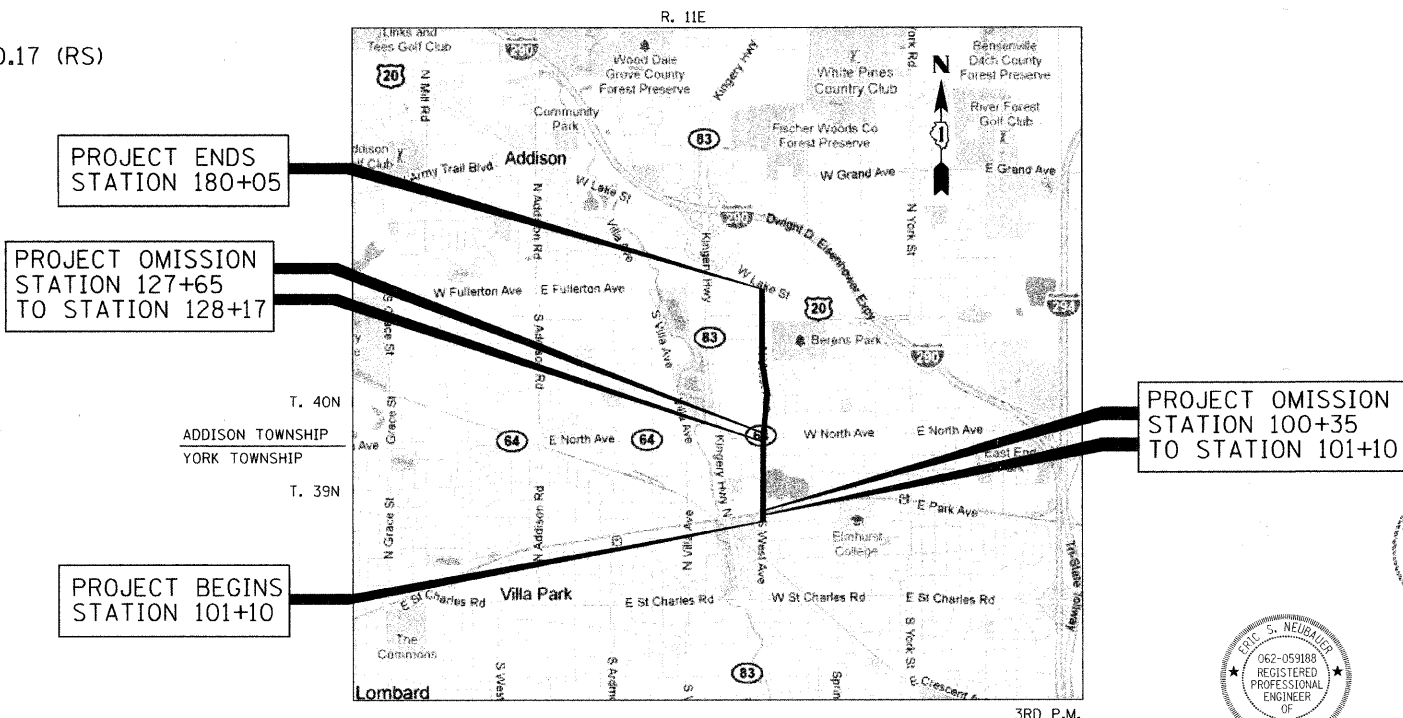


FULL SIZE PLANS HAVE BEEN PREPARED USING STANDARD ENGINEERING SCALES. REDUCED SIZED PLANS WILL NOT CONFORM TO STANDARD SCALES. IN MAKING MEASUREMENTS ON REDUCED PLANS, THE ABOVE SCALES MAY BE USED.

J.U.L.I.E.
JOINT UTILITY LOCATION INFORMATION FOR EXCAVATION
1-800-892-0123
OR 811

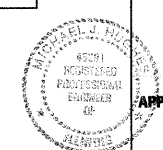
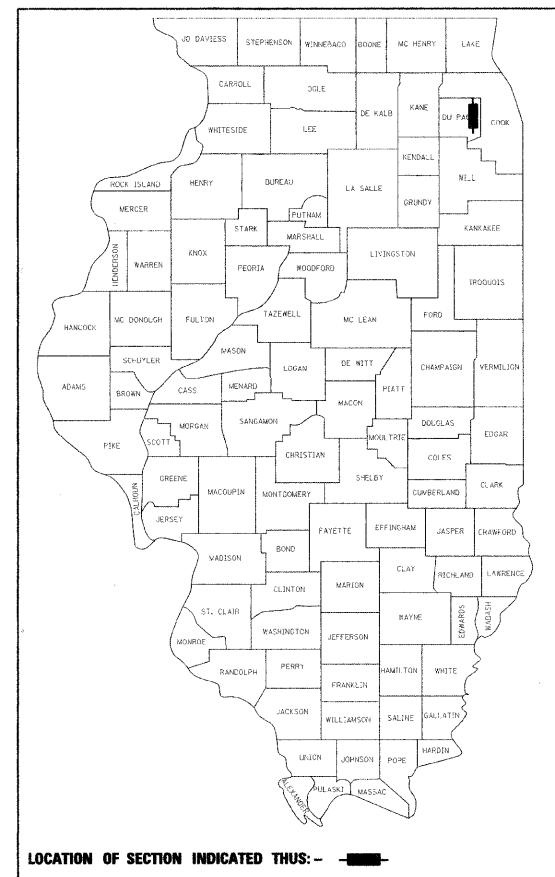
STATE OF ILLINOIS
DEPARTMENT OF TRANSPORTATION
DIVISION OF HIGHWAYS
PLANS FOR PROPOSED
FEDERAL AID HIGHWAY PROJECT

FAU ROUTE 2659 (WEST AVENUE)
FAU ROUTE 1392 (FIRST STREET) TO FAU ROUTE 3537 (LAKE STREET)
RESURFACING
SECTION 11-00177-00-RS
PROJECT M-9003(794)
CITY OF ELMHURST
DUPAGE COUNTY
JOB NO. C-91-414-11



LOCATION MAP

NOT TO SCALE
PROJECT LENGTH (GROSS / NET)
WEST AVENUE 7,895 FT / 7,843 FT (1.50 MILES / 1.49 MILES)



Eric S. Neubauber
ERIC S. NEUBAUER
NO. 062-059188
EXP. DATE 11/30/11

STATE OF ILLINOIS
DEPARTMENT OF TRANSPORTATION
DIVISION OF HIGHWAYS

APPROVED ON _____, 2011
Michael J. Hughes
CITY OF ELMHURST, CITY ENGINEER - Director of P.A.

PASSED April 11, 2011
Chris M. Hester
DISTRICT 1 ENGINEER OF LOCAL ROADS & STREETS

RELEASING FOR BID
BASED ON LIMITED
REVIEW APRIL 11, 2011
Drew M. O'Keefe Jr.
DEPUTY DIRECTOR OF HIGHWAYS, REGION 1 ENGINEER

PRINTED BY THE AUTHORITY
OF THE STATE OF ILLINOIS

222 SOUTH RIVERSIDE PLAZA, SUITE 2320
CHICAGO, ILLINOIS 60605
(312) 669-9801
TRAN SYSTEMS
PROGRAM AND OFFICE ENGINEER: CHARLES F. RIDDLE, P.E., (847) 705-4406, SCHAMBERG, IL

CONTRACT NO. 63585