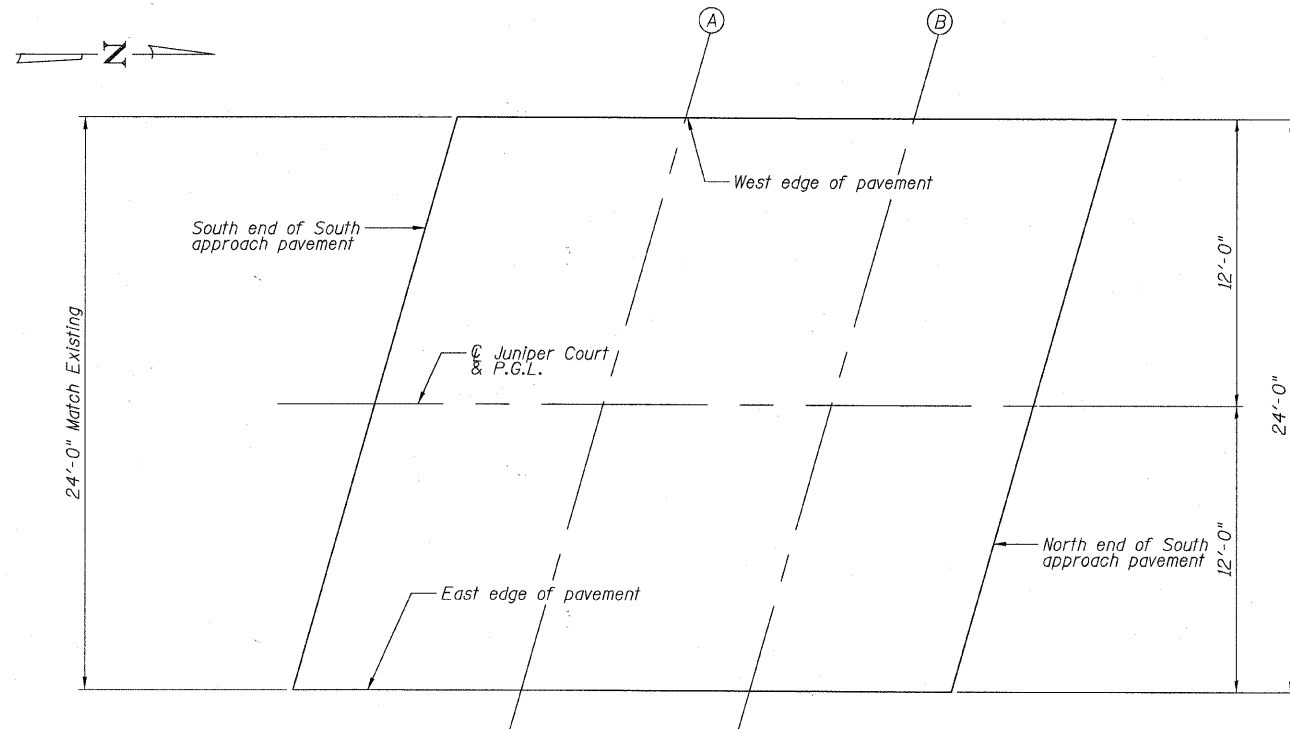
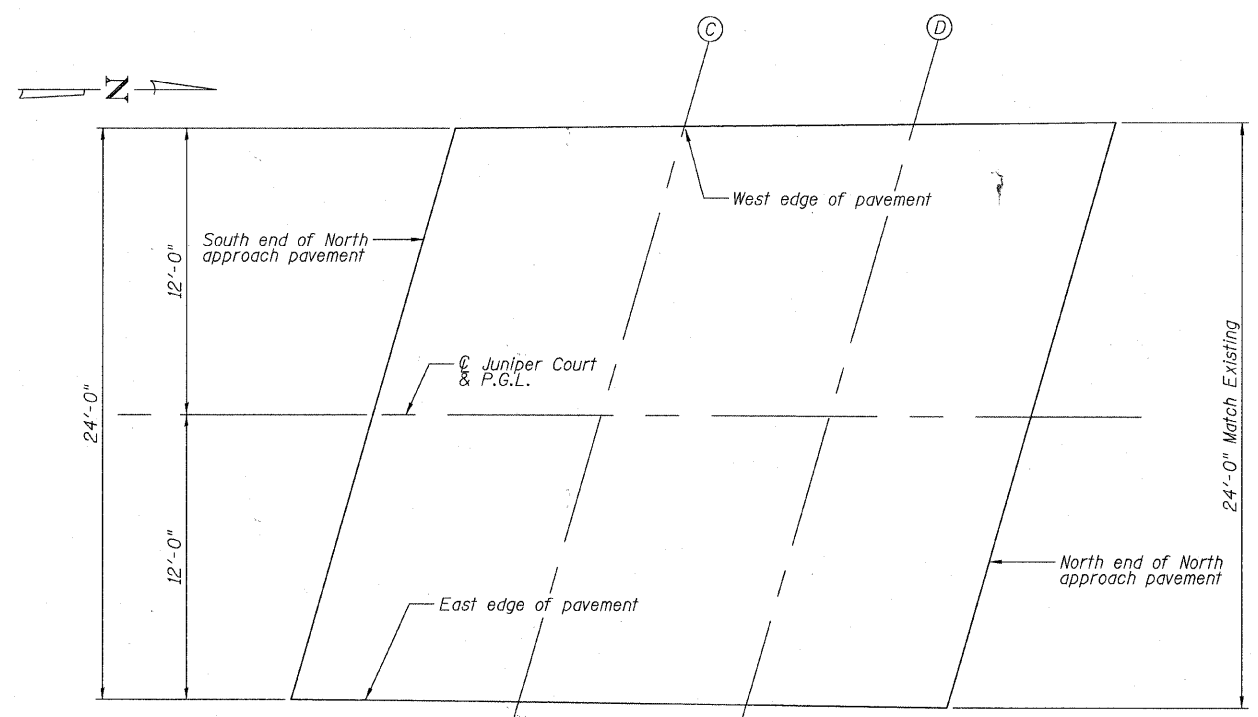


STATE OF ILLINOIS
DEPARTMENT OF TRANSPORTATION



PLAN - SOUTH APPROACH PAVEMENT



PLAN - NORTH APPROACH PAVEMENT

DESIGNED	L. LAWS
CHECKED	J. BUCHOLC
DRAWN	L. LAWS
CHECKED	J. BUCHOLC

SOUTH APPROACH SLAB
WEST EDGE OF PAVEMENT

Location	Station	Offset	Theoretical Grade Elevations
S. end south appr. pav't.	1+19.95	-12.00	657.14
A	1+29.95	-12.00	657.25
B	1+39.95	-12.00	657.30
N. end south appr. pav't.	1+49.95	-12.00	657.29

NORTH APPROACH SLAB
WEST EDGE OF PAVEMENT

Location	Station	Offset	Theoretical Grade Elevations
S. end north appr. pav't.	1+84.29	-12.00	657.00
C	1+94.29	-12.00	656.87
D	2+04.29	-12.00	656.85
N. end north appr. pav't.	2+14.09	-12.00	656.93

SOUTH APPROACH SLAB
@ JUNIPER CT. & P.G.L.

Location	Station	Offset	Theoretical Grade Elevations
S. end south appr. pav't.	1+16.51	0.00	657.33
A	1+26.51	0.00	657.46
B	1+36.51	0.00	657.53
N. end south appr. pav't.	1+46.51	0.00	657.54

NORTH APPROACH SLAB
@ JUNIPER CT. & P.G.L.

Location	Station	Offset	Theoretical Grade Elevations
S. end north appr. pav't.	1+80.85	0.00	657.28
C	1+90.85	0.00	657.14
D	2+00.85	0.00	657.09
N. end north appr. pav't.	2+10.85	0.00	657.14

SOUTH APPROACH SLAB
EAST EDGE OF PAVEMENT

Location	Station	Offset	Theoretical Grade Elevations
S. end south appr. pav't.	1+13.07	12.00	657.03
A	1+23.07	12.00	657.18
B	1+33.07	12.00	657.28
N. end south appr. pav't.	1+43.07	12.00	657.30

NORTH APPROACH SLAB
EAST EDGE OF PAVEMENT

Location	Station	Offset	Theoretical Grade Elevations
S. end north appr. pav't.	1+77.41	12.00	657.08
C	1+87.41	12.00	656.95
D	1+97.41	12.00	656.86
N. end north appr. pav't.	2+07.41	12.00	656.86

TOP OF APPROACH SLAB ELEVATIONS
STRUCTURE NO. 049-6153

SHEET NO. 2	F.A.U. RTE.	SECTION	COUNTY	TOTAL SHEETS	SHEET NO.
		09-00084-00-BR	LAKE	16	8
10 SHEETS	CONTRACT NO. 63587				
FED. ROAD DIST. NO. _ ILLINOIS FED. AID PROJECT					

