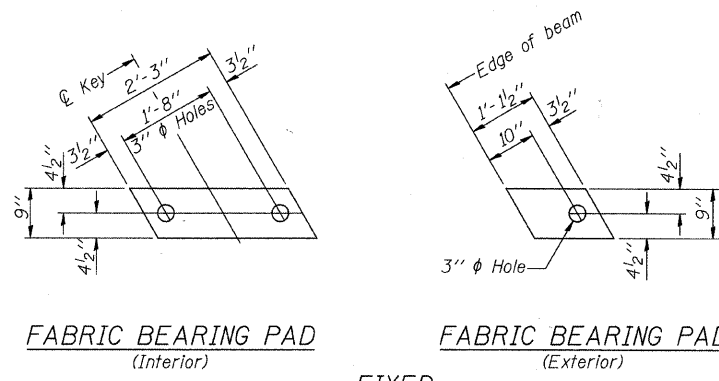


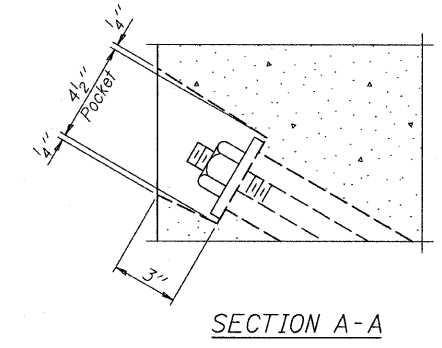
STATE OF ILLINOIS
DEPARTMENT OF TRANSPORTATION



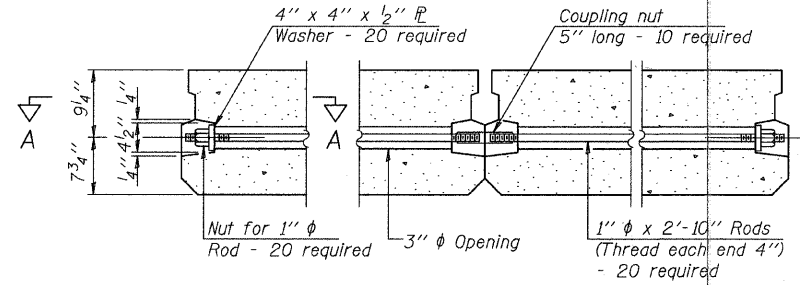
FABRIC BEARING PAD (Interior)
FABRIC BEARING PAD (Exterior)

FIXED

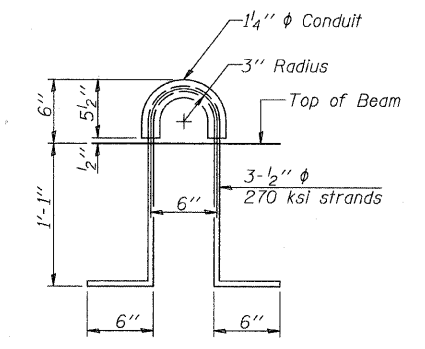
Notes:
All bearing pads shall be 1" thick.
Omit holes when using expansion bearings.
Expansion bearing pad shall be bonded to the substructure.



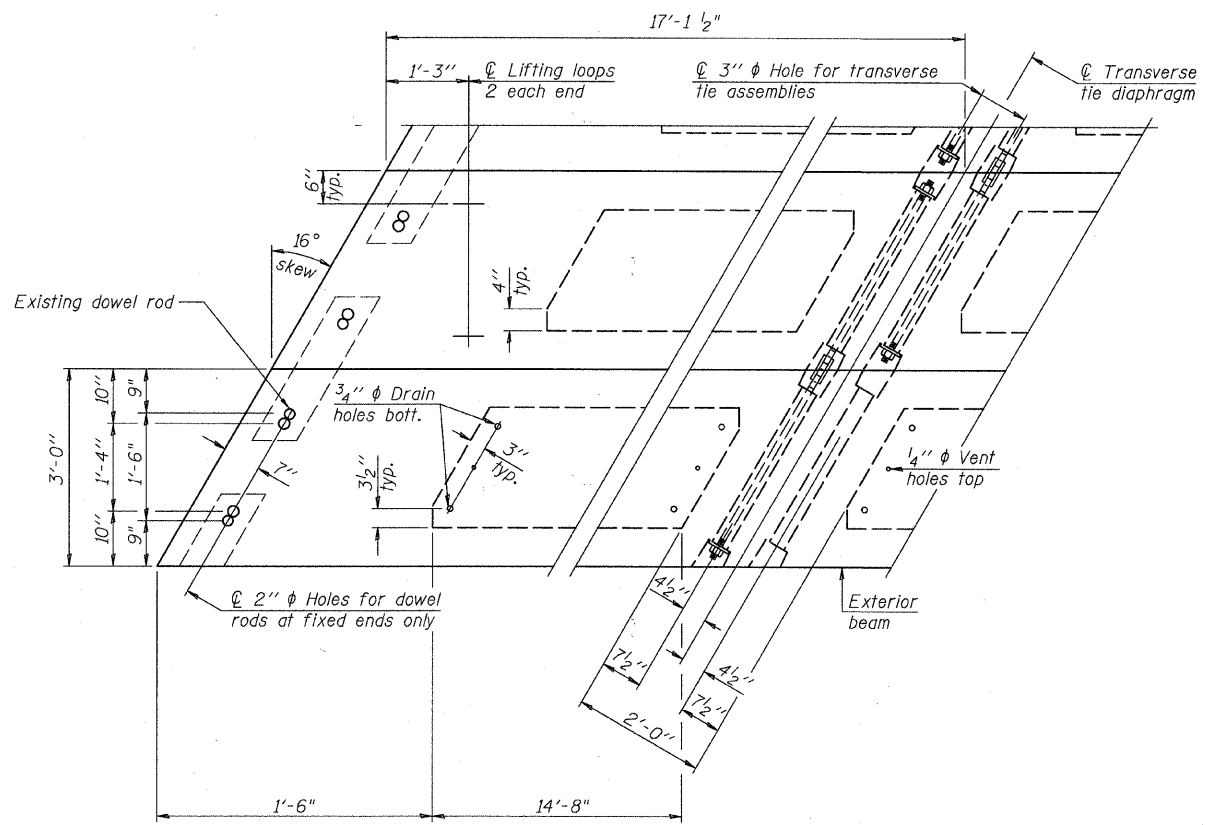
SECTION A-A



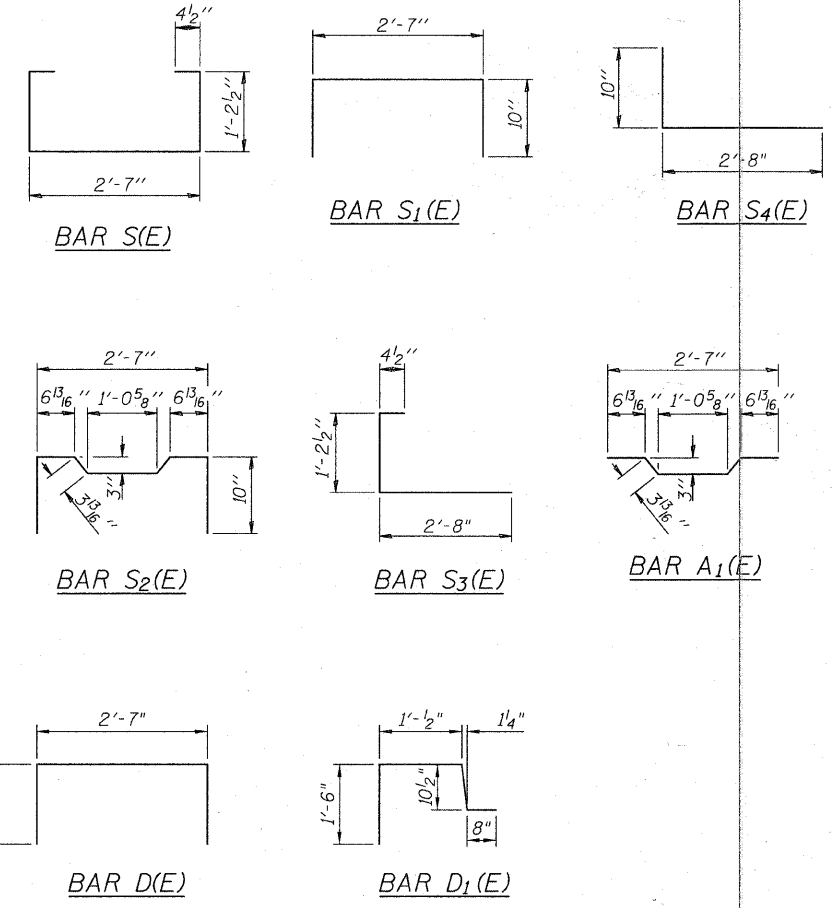
TYPICAL TRANSVERSE TIE ASSEMBLY



LIFTING LOOP DETAIL



PLAN VIEW



BAR LIST
ONE BEAM ONLY

(For information only)

Bar	No.	Size	Length	Shape
A(E)	10	#4	2'-7"	—
A ₁ (E)	20	#4	2'-11"	—
B(E)	4	#5	33'-11"	—
B ₁ (E)	4	#4	33'-11"	—
D(E)	47	#4	5'-7"	—
D ₁ (E)	47	#4	4'-7"	┌
S(E)	44	#4	5'-9"	┌
S ₁ (E)	8	#4	4'-3"	┌
S ₂ (E)	40	#4	4'-6"	┌
S ₃ (E)	13	#4	4'-7"	┌
S ₄ (E)	13	#4	4'-2"	┌
U(E)	8	#5	3'-8"	┌
U ₁ (E)	4	#4	8'-8"	┌

Beams 1 & 11 Only
Beams 2 & 10 Only

BILL OF MATERIAL

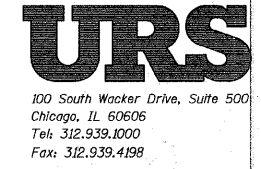
Precast Prestressed Conc. Deck Bms. (17" depth)	Sq. Ft.	1130
---	---------	------

PPC DECK BEAM DETAILS
STRUCTURE NO. 049-6153

DESIGNED	L. LAWS
CHECKED	J. BUCHOLC
DRAWN	L. LAWS
CHECKED	J. BUCHOLC

NOTES

- Prestressing steel shall be uncoated high strength, low relaxation 7-wire strand, Grade 270. The nominal diameter shall be 1/2" and the nominal cross-sectional area shall be 0.153 sq. in.
- The 1" rods in the transverse tie assembly shall be tightened to a snug fit and the threads set. Pockets on exterior faces of bridge shall be filled with grout after transverse tie assembly is in place.
- Reinforcement bars shall conform to ASTM A 706, Grade 60. (See Special Provisions).
- Two 3/8" fabric adjusting shims of the dimensions of the exterior bearing pad shall be provided for each bearing pad location.
- A minimum 2 1/2" diameter lifting pin shall be used to engage the lifting loops during handling.
- Corrosion Inhibitor, per Article 1020.05(b)(12) and 1021.06 of the Standard Specifications, shall be used in the concrete for precast prestressed concrete deck beams.
- Compressive strength of prestressed concrete, f'c, shall be 6000 psi.
- Compressive strength of prestressed concrete at release, f'ci, shall be 5000 psi.



SHEET NO. 6	F.A.U. RTE.	SECTION	COUNTY	TOTAL SHEETS	SHEET NO.
10 SHEETS		09-00084-00-BR	LAKE	16	12
FED. ROAD DIST. NO. _			ILLINOIS FED. AID PROJECT		
CONTRACT NO. 63587					