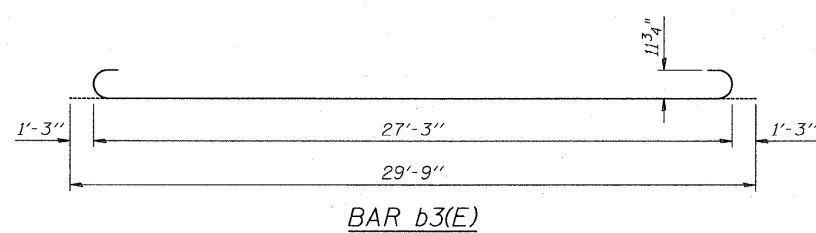
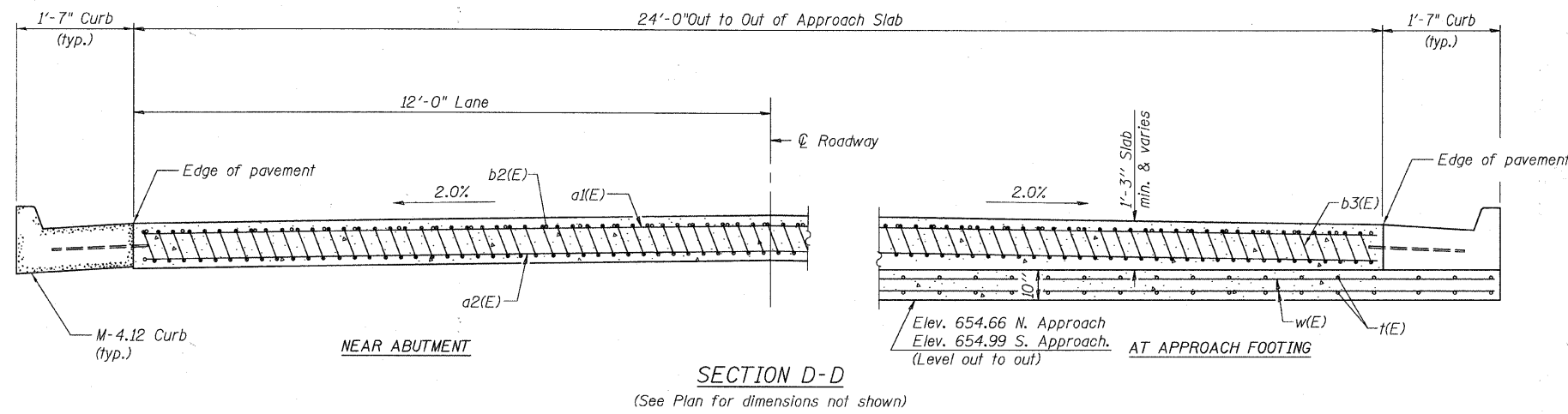
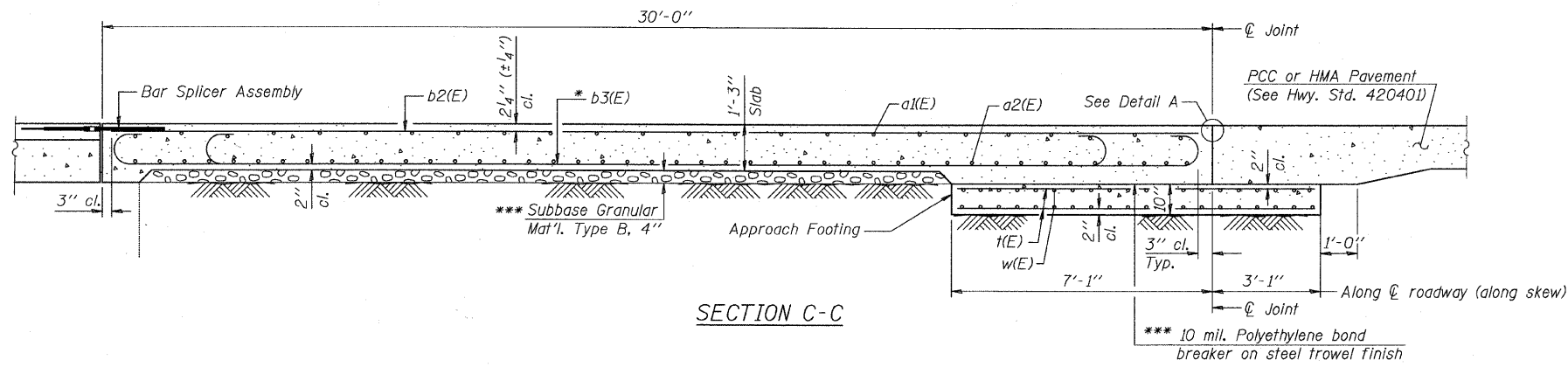


STATE OF ILLINOIS
DEPARTMENT OF TRANSPORTATION



Notes:
See sheet 14 for Detail A.
Approach slab shall be paid for as Concrete Superstructure.
Approach footing concrete shall be paid for as Concrete Structures.
Reinforcement shall be paid for as Reinforcement Bars, Epoxy Coated.

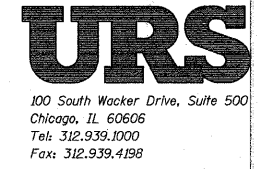
The approach footing maximum applied service bearing pressure (Q_{max}) = 2.0 ksf.
For bar splicer details, see sheet 16.
Cost of excavation for approach footing included with Concrete Structures.

TWO APPROACHES
BILL OF MATERIAL

| Bar | No. | Size | Length | Shape |
|----------------------------------|-----|------|---------|--------|
| a1(E) | 50 | #4 | 23'-8" | — |
| a2(E) | 92 | #5 | 23'-8" | — |
| b2(E) | 44 | #4 | 29'-8" | — |
| b3(E) | 120 | #9 | 30'-9" | — |
| t(E) | 108 | #4 | 9'-8" | — |
| w(E) | 80 | #5 | 25'-10" | — |
| Protective Coat | | | Sq. Yd. | 160 |
| Concrete Superstructure | | | Cu. Yd. | 66.7 |
| Concrete Structures | | | Cu. Yd. | 16.4 |
| Bridge Deck Grooving | | | Sq. Yd. | 160 |
| Reinforcement Bars, Epoxy Coated | | | Pound | 19,340 |

* Tilt #9 b3(E) bars as required to maintain clearance.
*** Cost included with Concrete Superstructure.

| | |
|----------|------------|
| DESIGNED | L. LAWS |
| CHECKED | J. BUCHOLC |
| DRAWN | L. LAWS |
| CHECKED | J. BUCHOLC |



(Sheet 2 of 2)
BRIDGE APPROACH SLAB DETAILS
STRUCTURE NO. 049-6153

| | | | | | |
|---|-------------|----------------|--------|--------------|-----------|
| SHEET NO. 9 10 SHEETS | F.A.U. RTE. | SECTION | COUNTY | TOTAL SHEETS | SHEET NO. |
| | | 09-00084-00-BR | LAKE | 16 | 15 |
| CONTRACT NO. 63587 | | | | | |
| FED. ROAD DIST. NO. _ ILLINOIS FED. AID PROJECT | | | | | |