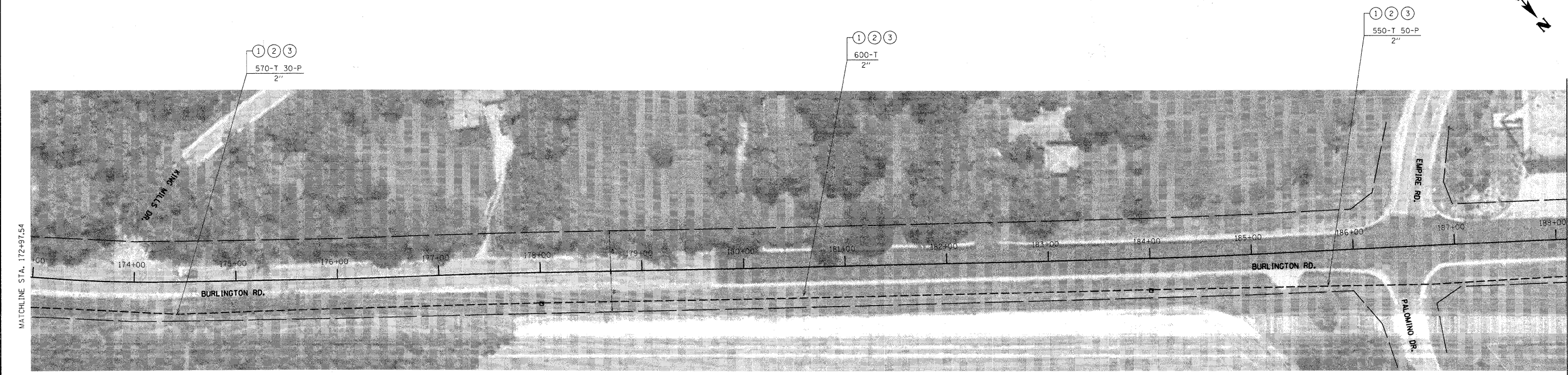
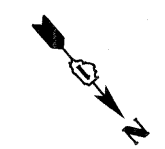
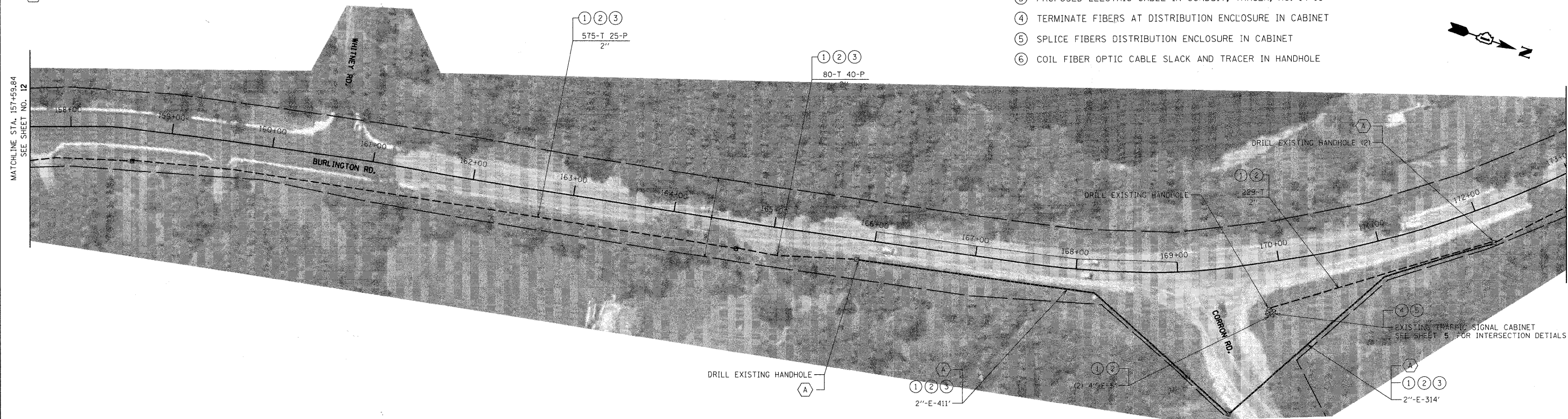
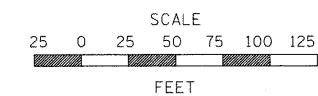


CONSTRUCTION NOTES:

- (A) EXISTING AT&T CONDUIT. CONTRACTOR SHALL COORDINATE WITH AT&T BEFORE CONSTRUCTION.
- (B) PLACE NEW CONDUIT AS CLOSE TO THE EXISTING R.O.W. AS POSSIBLE.
- (C) CONTRACTOR SHALL COORDINATE WITH KANE COUNTY DIVISION OF TRANSPORTATION BEFORE CONSTRUCTION.

NOTES:

- ① PROPOSED FIBER OPTIC CABLE IN CONDUIT, SM36F
- ② PROPOSED FIBER OPTIC CABLE IN CONDUIT, SM144F
- ③ PROPOSED ELECTRIC CABLE IN CONDUIT, TRACER, NO. 14 1C
- ④ TERMINATE FIBERS AT DISTRIBUTION ENCLOSURE IN CABINET
- ⑤ SPLICE FIBERS DISTRIBUTION ENCLOSURE IN CABINET
- ⑥ COIL FIBER OPTIC CABLE SLACK AND TRACER IN HANDHOLE



FILE NAME = #FILE#	USER NAME = #USER#	DESIGNED - DG	REVISOR -	<b>STATE OF ILLINOIS DEPARTMENT OF TRANSPORTATION</b>	<b>BURLINGTON ROAD FROM IL 64 TO TMC</b>		F.A.P. RTE. VARIES	SECTION 08-00389-00-TL	COUNTY KANE	TOTAL SHEETS 28	SHEET NO. 13
	PLOT SCALE = #SCALE#	DRAWN - JM	REVISIONS -		SCALE: 1" = 50'	SHEET NO. 3 OF 4 SHEETS	STA. 157+59.84 TO STA. 188+10.82	CONTRACT NO. 63594		ILLINOIS FED. AID PROJECT	
	PLOT DATE = #DATE#	CHECKED - DB	REVISIONS -								
		DATE - 04/11/2011	REVISIONS -								