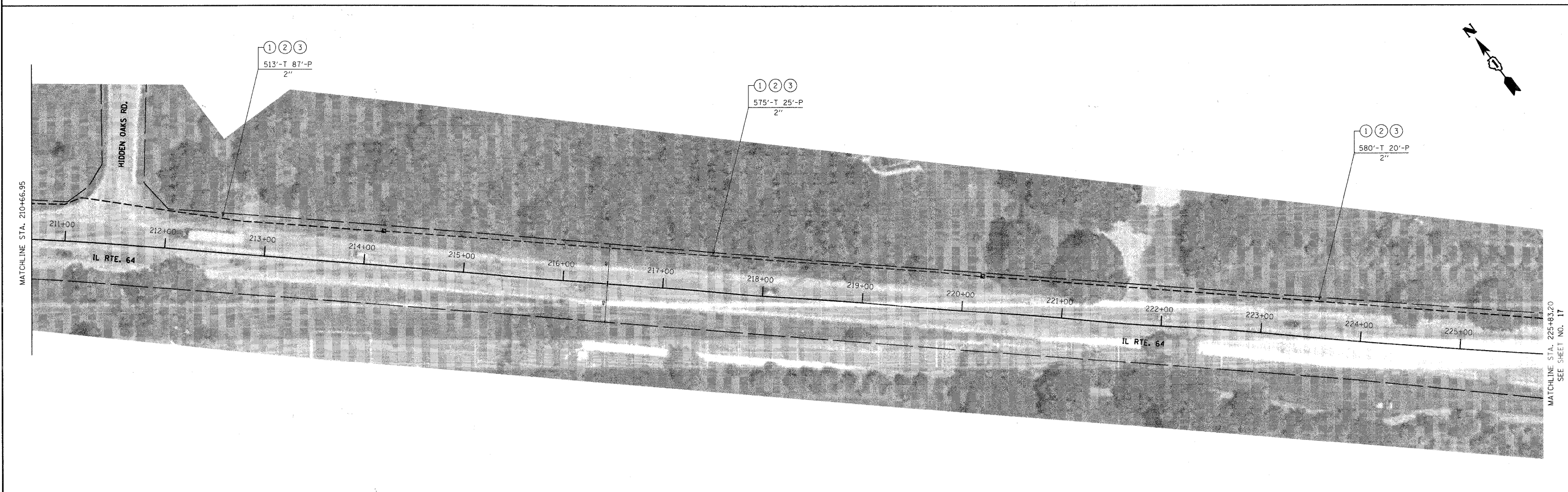
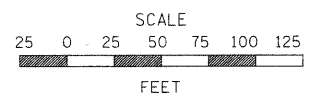


- NOTES:
- ① PROPOSED FIBER OPTIC CABLE IN CONDUIT, SM36F
 - ② PROPOSED FIBER OPTIC CABLE IN CONDUIT, SM144F
 - ③ PROPOSED ELECTRIC CABLE IN CONDUIT, TRACER, NO. 14 1C
 - ④ TERMINATE FIBERS AT DISTRIBUTION ENCLOSURE IN CABINET
 - ⑤ SPLICE FIBERS DISTRIBUTION ENCLOSURE IN CABINET
 - ⑥ COIL FIBER OPTIC CABLE SLACK AND TRACER IN HANDHOLE



FILE NAME =	USER NAME = #USER#	DESIGNED - DG	REVISED -	STATE OF ILLINOIS DEPARTMENT OF TRANSPORTATION	IL 64 BURLINGTON ROAD TO RANDALL ROAD	F.A.P. RTE.	SECTION	COUNTY	TOTAL SHEETS	SHEET NO.	
#FILE#	PLOT SCALE = #SCALE#	CHECKED - DB	REVISED -			VARIES	08-00389-00-TL	KANE	28	16	
	PLOT DATE = #DATE#	DATE - 04/11/2011	REVISED -			CONTRACT NO. 63594					
						ILLINOIS FED. AID PROJECT					

SCALE: 1" = 50' SHEET NO. 2 OF 7 SHEETS STA. 195+32.72 TO STA. 225+83.20