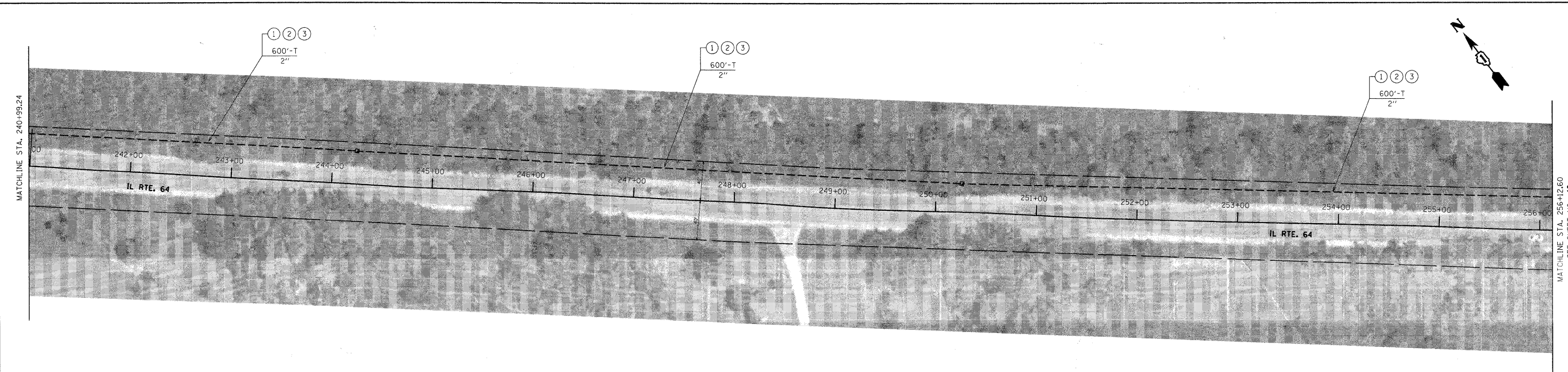
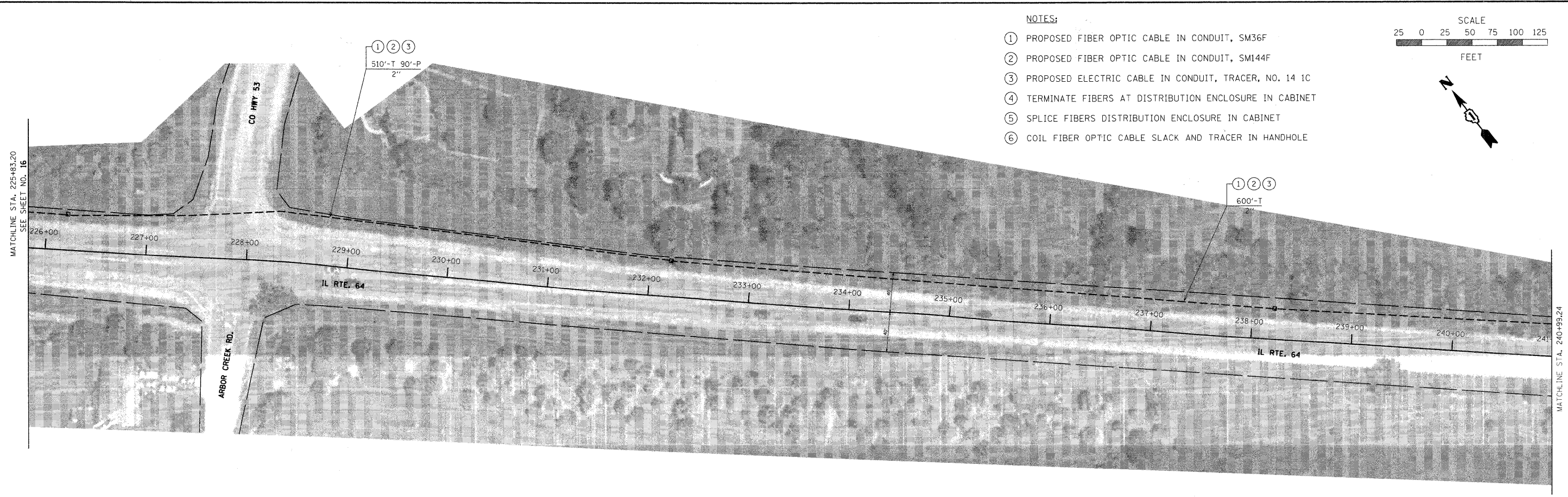
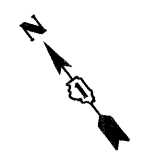
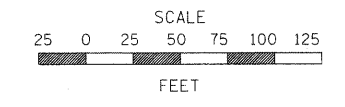


NOTES:

- ① PROPOSED FIBER OPTIC CABLE IN CONDUIT, SM36F
- ② PROPOSED FIBER OPTIC CABLE IN CONDUIT, SM144F
- ③ PROPOSED ELECTRIC CABLE IN CONDUIT, TRACER, NO. 14 1C
- ④ TERMINATE FIBERS AT DISTRIBUTION ENCLOSURE IN CABINET
- ⑤ SPLICE FIBERS DISTRIBUTION ENCLOSURE IN CABINET
- ⑥ COIL FIBER OPTIC CABLE SLACK AND TRACER IN HANDHOLE



FILE NAME =	USER NAME = #USER#	DESIGNED - DG	REVISED -	STATE OF ILLINOIS DEPARTMENT OF TRANSPORTATION	IL 64 BURLINGTON ROAD TO RANDALL ROAD		F.A.P. RTE.	SECTION	COUNTY	TOTAL SHEETS	SHEET NO.
#FILE#		DRAWN - JM	REVISED -		VARIES	08-00389-00-TL	KANE	28	17		
		CHECKED - DB	REVISED -		SCALE: 1" = 50'		SHEET NO. 3 OF 7 SHEETS		STA. 225+83.20 TO STA. 256+12.60	CONTRACT NO. 63594	
		DATE - 04/11/2011	REVISED -		ILLINOIS FED. AID PROJECT						