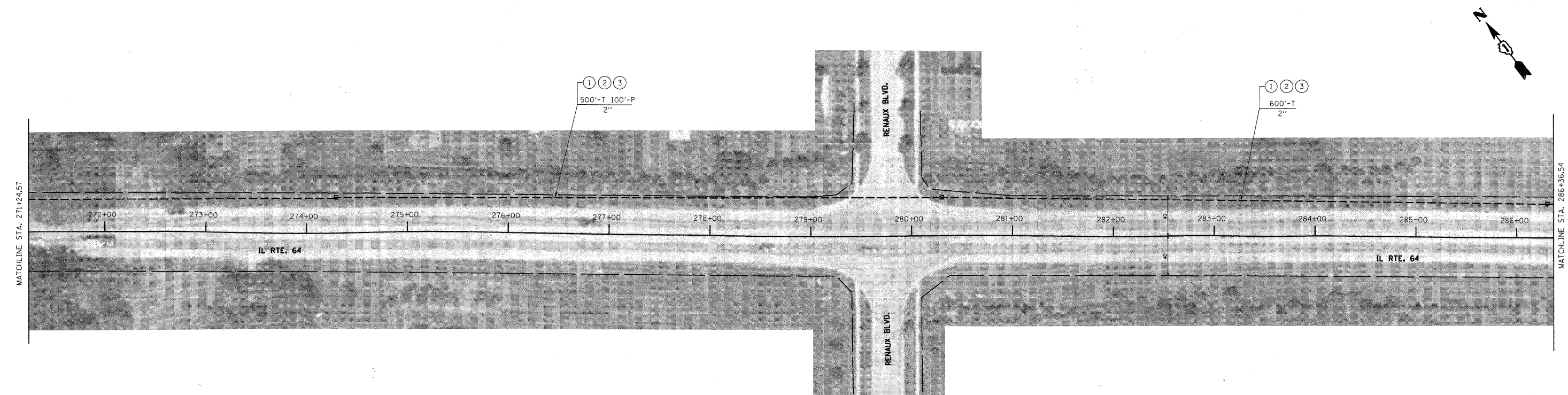
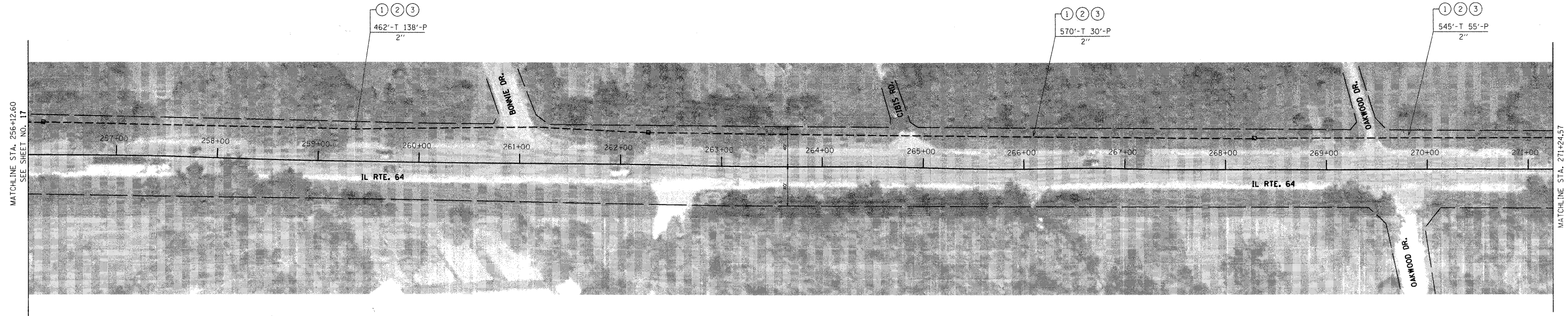
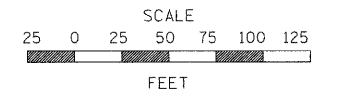


CONSTRUCTION NOTES:

- A EXISTING AT&T CONDUIT. CONTRACTOR SHALL COORDINATE WITH AT&T BEFORE CONSTRUCTION.
- B PLACE NEW CONDUIT AS CLOSE TO THE EXISTING R.O.W. AS POSSIBLE.
- C CONTRACTOR SHALL COORDINATE WITH KANE COUNTY DIVISION OF TRANSPORTATION BEFORE CONSTRUCTION.

NOTES:

- ① PROPOSED FIBER OPTIC CABLE IN CONDUIT, SM36F
- ② PROPOSED FIBER OPTIC CABLE IN CONDUIT, SM144F
- ③ PROPOSED ELECTRIC CABLE IN CONDUIT, TRACER, NO. 14 1C
- ④ TERMINATE FIBERS AT DISTRIBUTION ENCLOSURE IN CABINET
- ⑤ SPLICE FIBERS DISTRIBUTION ENCLOSURE IN CABINET
- ⑥ COIL FIBER OPTIC CABLE SLACK AND TRACER IN HANDHOLE



FILE NAME =	USER NAME = #USER#	DESIGNED - DG	REVISED -	<b>STATE OF ILLINOIS DEPARTMENT OF TRANSPORTATION</b>	<b>IL 64 BURLINGTON ROAD TO RANDALL ROAD</b>		F.A.P. RTE.	SECTION	COUNTY	TOTAL SHEETS	SHEET NO.	
#FILEL#		DRAWN - JM	REVISED -		VARIES	08-00389-00-TL	KANE	28	18			
	PLOT SCALE = #SCALE#	CHECKED - DB	REVISED -		SCALE: 1" = 50'		SHEET NO. 4 OF 7 SHEETS		STA. 256+12.60 TO STA. 286+36.54		CONTRACT NO. 63594	
	PLOT DATE = #DATE#	DATE - 04/11/2011	REVISED -		ILLINOIS FED. AID PROJECT							