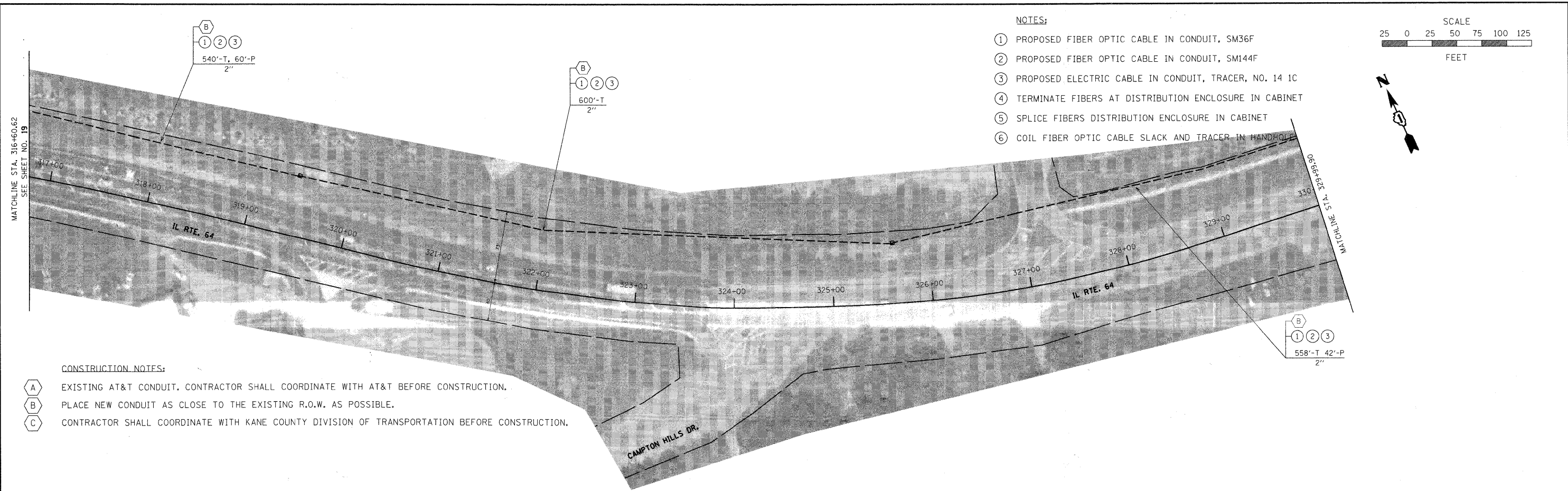
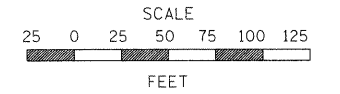


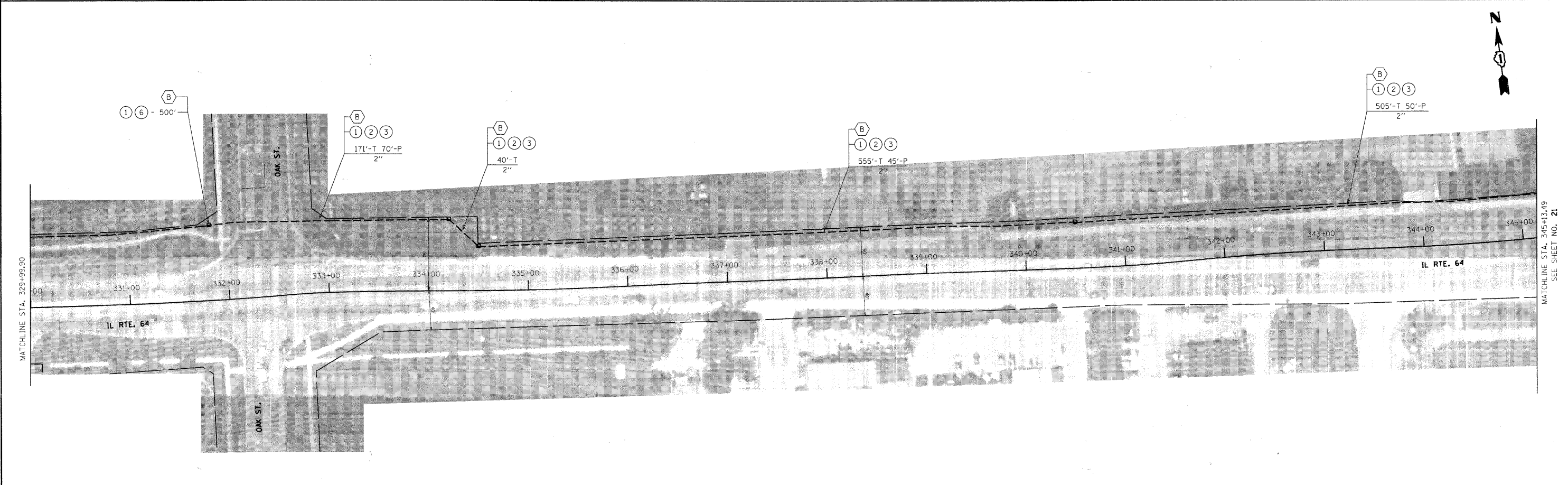
NOTES:

- ① PROPOSED FIBER OPTIC CABLE IN CONDUIT, SM36F
- ② PROPOSED FIBER OPTIC CABLE IN CONDUIT, SM144F
- ③ PROPOSED ELECTRIC CABLE IN CONDUIT, TRACER, NO. 14 1C
- ④ TERMINATE FIBERS AT DISTRIBUTION ENCLOSURE IN CABINET
- ⑤ SPLICE FIBERS DISTRIBUTION ENCLOSURE IN CABINET
- ⑥ COIL FIBER OPTIC CABLE SLACK AND TRACER IN HANDHOLE



CONSTRUCTION NOTES:

- A EXISTING AT&T CONDUIT. CONTRACTOR SHALL COORDINATE WITH AT&T BEFORE CONSTRUCTION.
- B PLACE NEW CONDUIT AS CLOSE TO THE EXISTING R.O.W. AS POSSIBLE.
- C CONTRACTOR SHALL COORDINATE WITH KANE COUNTY DIVISION OF TRANSPORTATION BEFORE CONSTRUCTION.



FILE NAME =	USER NAME = #USER#	DESIGNED - DG	REVISED -	STATE OF ILLINOIS DEPARTMENT OF TRANSPORTATION	IL 64 BURLINGTON ROAD TO RANDALL ROAD	F.A.P. RTE.	SECTION	COUNTY	TOTAL SHEETS	SHEET NO.	
#FILE#	PLOT SCALE = #SCALE#	CHECKED - DB	REVISED -			VARIES	08-00389-00-TL	KANE	28	20	
	PLOT DATE = #DATE#	DATE - 04/11/2011	REVISED -			CONTRACT NO. 63594					
						ILLINOIS FED. AID PROJECT					
					SCALE: 1" = 50'	SHEET NO. 6 OF 7 SHEETS		STA. 316+60.62 TO STA. 345+13.49			