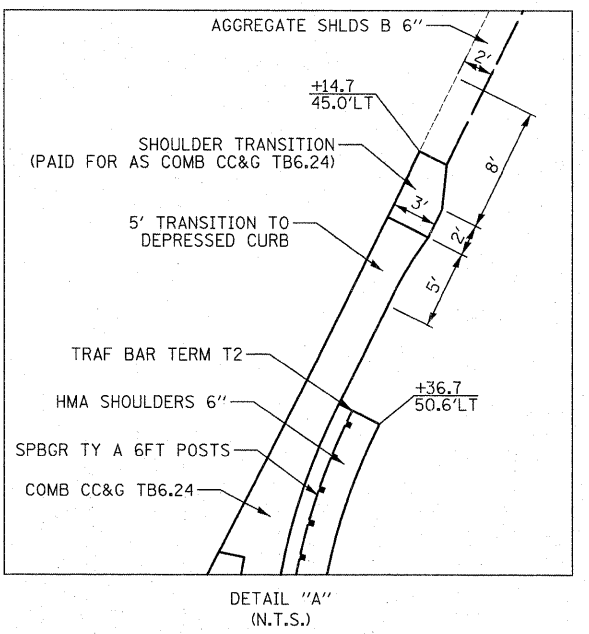
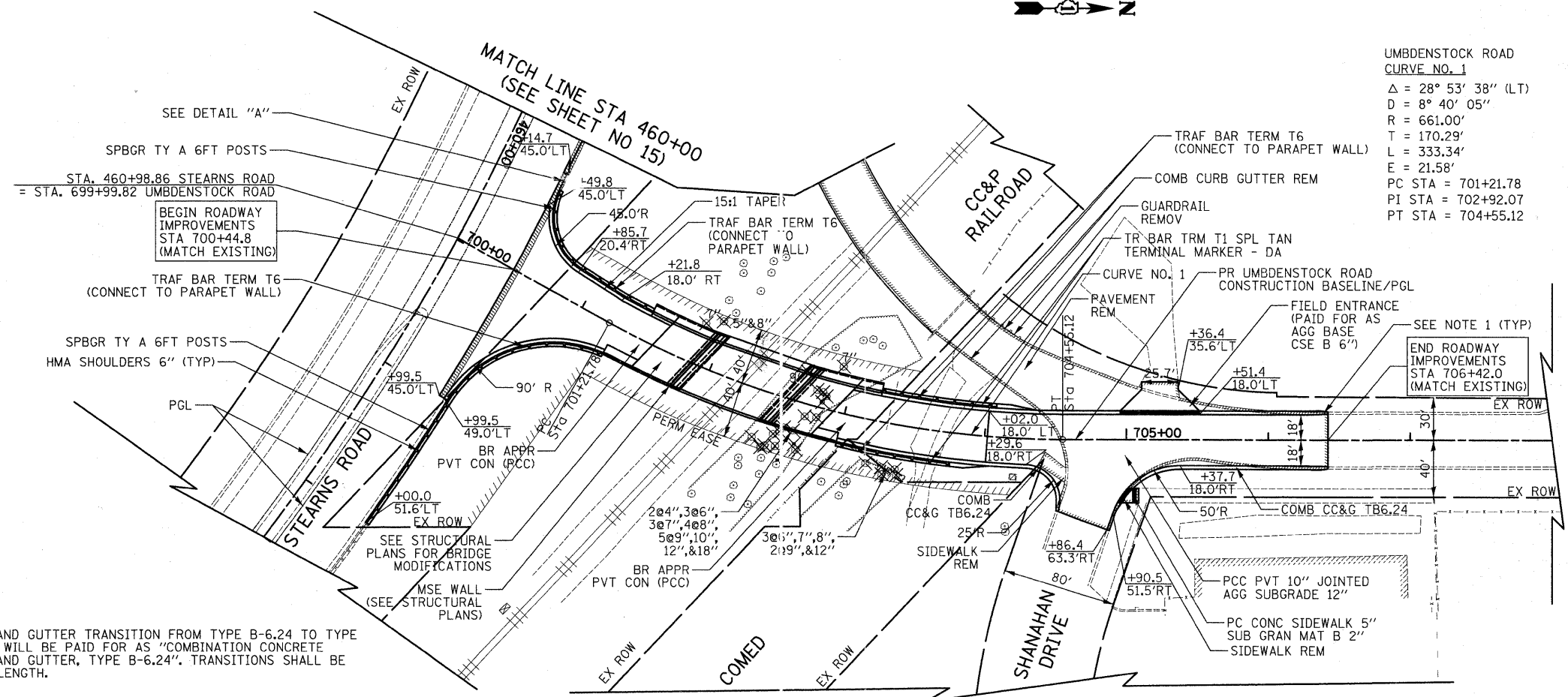


| | |
|---------------|--|
| DATE | |
| BY | |
| SURVEYED | |
| PLOTTED | |
| TEMPLATE | |
| AREAS CHECKED | |
| NO. | |

| | |
|-----------------|--|
| DATE | |
| BY | |
| ORIGINAL SURVEY | |
| PLOTTED | |
| TEMPLATE | |
| AREAS CHECKED | |
| NO. | |



NOTE:
 1. CURB AND GUTTER TRANSITION FROM TYPE B-6.24 TO TYPE B-6.12 WILL BE PAID FOR AS "COMBINATION CONCRETE CURB AND GUTTER, TYPE B-6.24". TRANSITIONS SHALL BE 6' IN LENGTH.

