



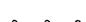



STAGE 2 OPEN BRIDGE ACROSS CC&P RAILROAD AND SHIFT TRAFFIC

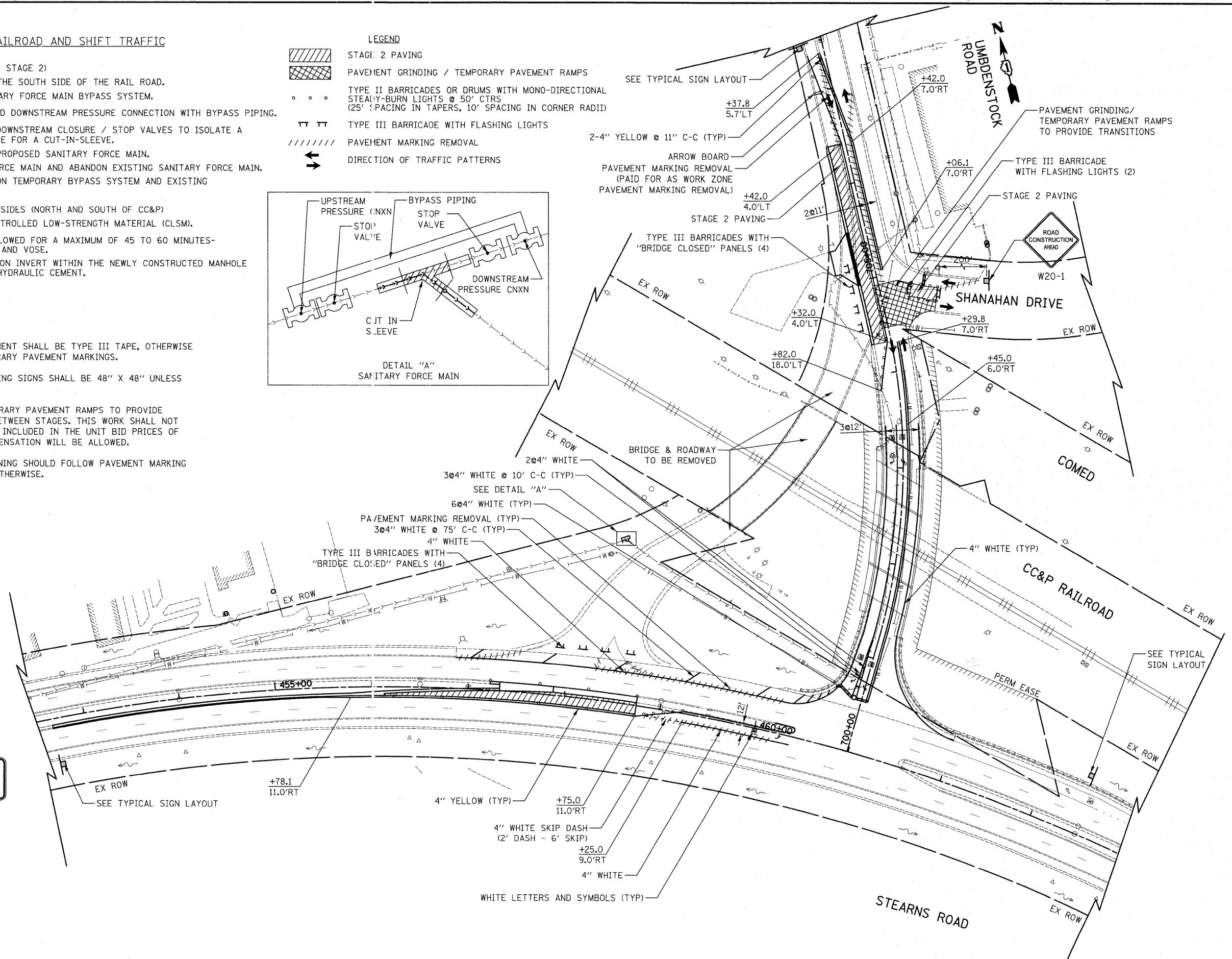
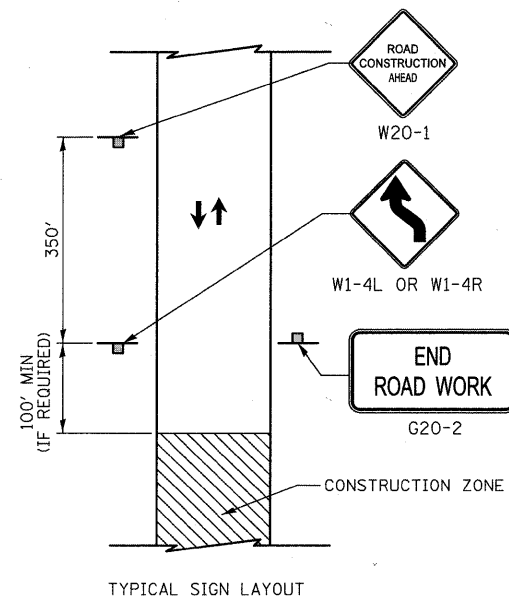
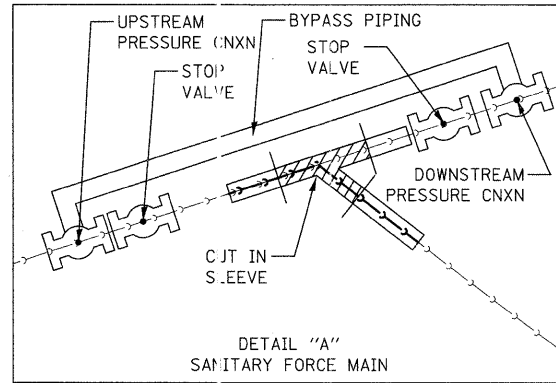
1. INSTALL PROPOSED SANITARY FORCE MAIN. (SAN STAGE 2)
  - A. CONSTRUCT FORCE MAIN CONNECTION ON THE SOUTH SIDE OF THE RAIL ROAD.
    - I. CONSTRUCT (TEMPORARY) SANITARY FORCE MAIN BYPASS SYSTEM.
      1. INSTALL AN UPSTREAM AND DOWNSTREAM PRESSURE CONNECTION WITH BYPASS PIPING.
      2. INSTALL UPSTREAM AND DOWNSTREAM CLOSURE / STOP VALVES TO ISOLATE A SECTION OF EXISTING PIPE FOR A CUT-IN-SLEEVE.
    - II. INSTALL CUT-IN-SLEEVE FOR PROPOSED SANITARY FORCE MAIN.
    - III. OPEN PROPOSED SANITARY FORCE MAIN AND ABANDON EXISTING SANITARY FORCE MAIN.
      1. OPEN, CLOSE, AND ABANDON TEMPORARY BYPASS SYSTEM AND EXISTING FORCE MAIN.
  - B. ABANDON EXISTING FORCE MAIN ON BOTH SIDES (NORTH AND SOUTH OF CC&P)
    - I. CAP, PLUG, AND FILL WITH CONTROLLED LOW-STRENGTH MATERIAL (CLSM).
      1. TEMPORARY SHUTDOWN ALLOWED FOR A MAXIMUM OF 45 TO 60 MINUTES-COORDINATE WITH OCWRD AND VOSE.
    - II. REMOVE FORCE MAIN CONNECTION INVERT WITHIN THE NEWLY CONSTRUCTED MANHOLE (NORTH-SIDE) AND SEAL WITH HYDRAULIC CEMENT.

NOTE:

1. ALL PAVEMENT MARKINGS ON FINAL PAVEMENT SHALL BE TYPE III TAPE, OTHERWISE ALL PAVEMENT MARKINGS WILL BE TEMPORARY PAVEMENT MARKINGS.
2. ALL DIAMOND SHAPE CONSTRUCTION WARNING SIGNS SHALL BE 48" X 48" UNLESS OTHERWISE NOTED.
3. CONSTRUCT PAVEMENT GRINDING / TEMPORARY PAVEMENT RAMPS TO PROVIDE MAINTENANCE OF TRAFFIC TRANSITIONS BETWEEN STAGES. THIS WORK SHALL NOT BE PAID FOR SEPARATELY, BUT SHALL BE INCLUDED IN THE UNIT BID PRICES OF THE CONTRACT, AND NO ADDITIONAL COMPENSATION WILL BE ALLOWED.
4. PAVEMENT MARKING OFFSETS AND STATIONING SHOULD FOLLOW PAVEMENT MARKING AND SIGNING PLAN UNLESS CALLED OUT OTHERWISE.

LEGEND

-  STAGE 2 PAVING
-  PAVEMENT GRINDING / TEMPORARY PAVEMENT RAMPS
-  TYPE II BARRICADES OR DRUMS WITH MONO-DIRECTIONAL STEADY-BURN LIGHTS @ 50' CTRS (25' SPACING IN TAPERS, 10' SPACING IN CORNER RADII)
-  TYPE III BARRICADE WITH FLASHING LIGHTS
-  PAVEMENT MARKING REMOVAL
-  DIRECTION OF TRAFFIC PATTERNS



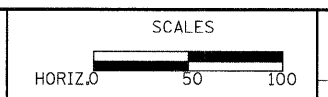
DATE	
BY	
ORIGINAL SURVEY	
PLOTTED	
NOTE BOOK	
AREAS CHECKED	
NO.	

DATE	
BY	
ORIGINAL SURVEY	
PLOTTED	
NOTE BOOK	
AREAS CHECKED	
NO.	

**CIVILTECH**  
450 E Devon Ave, Suite 300  
Itasca, Illinois 60143  
Tel: 630.773.3900 Fax: 630.773.3975  
www.civiltechinc.com

DESIGNED - PK	REVISED -
DRAWN - PK	REVISED -
CHECKED - RTM	REVISED -
DATE - 3/25/2011	REVISED -

**STATE OF ILLINOIS**  
**DEPARTMENT OF TRANSPORTATION**



**STAGES OF CONSTRUCTION - STAGE 2**  
SHEET NO. 2 OF 3 SHEETS STA. 700+44.8 TO STA. 706+42.0

F.A.P. RTE. 361	SECTION 06-00214-27-BR	COUNTY KANE	TOTAL SHEETS 87	SHEET NO. 18
CONTRACT NO. 63595				
FED. ROAD DIST. NO. 1 ILLINOIS FED. AID PROJECT				