




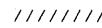
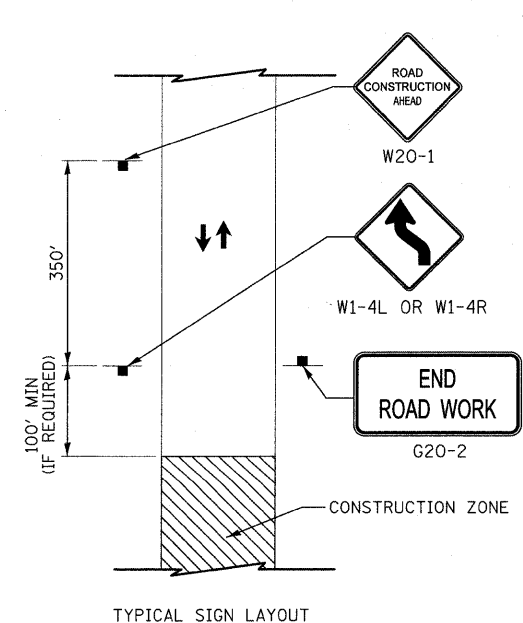
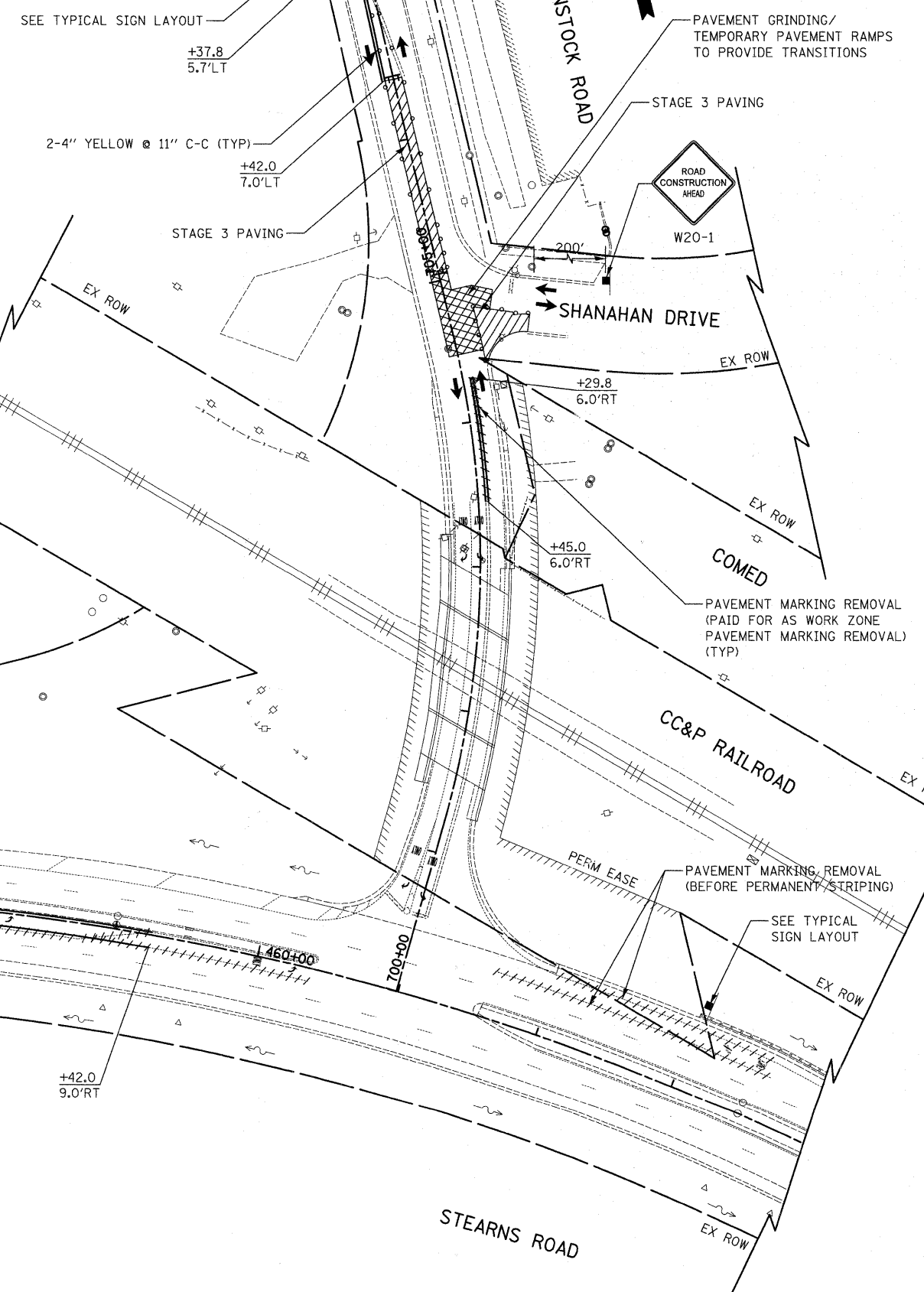


NOTE:

1. ALL PAVEMENT MARKINGS ON FINAL PAVEMENT SHALL BE TYPE III TAPE, OTHERWISE ALL PAVEMENT MARKINGS WILL BE TEMPORARY PAVEMENT MARKINGS.
2. ALL DIAMOND SHAPE CONSTRUCTION WARNING SIGNS SHALL BE 48" X 48" UNLESS OTHERWISE NOTED.
3. CONSTRUCT PAVEMENT GRINDING / TEMPORARY PAVEMENT RAMPS TO PROVIDE MAINTENANCE OF TRAFFIC TRANSITIONS BETWEEN STAGES. THIS WORK SHALL NOT BE PAID FOR SEPARATELY, BUT SHALL BE INCLUDED IN THE UNIT BID PRICES OF THE CONTRACT, AND NO ADDITIONAL COMPENSATION WILL BE ALLOWED.
4. PAVEMENT MARKING OFFSETS AND STATIONING SHOULD FOLLOW PAVEMENT MARKING AND SIGNING PLAN UNLESS CALLED OUT OTHERWISE.
5. REMAINING CONCRETE PAVEMENT SQUARES SHOULD BE PAVED IN ACCORDANCE WITH DETAIL 701301 "LANE CLOSURE, 2L, 2W, SHORT TIME OPERATION" AT THE DIRECTION OF ENGINEER.
6. AFTER ALL PAVING HAS BEEN COMPLETE ALL WORK ZONE PAVEMENT MARKINGS SHALL BE REMOVED AND PERMANENT PAVEMENT MARKINGS PLACED.

LEGEND

	STAGE 3 PAVING
	PAVEMENT GRINDING / TEMPORARY PAVEMENT RAMPS
	TYPE II BARRICADES OR DRUMS WITH MONO-DIRECTIONAL STEADY-BURN LIGHTS @ 50' CTRS (25' SPACING IN TAPERS, 10' SPACING IN CORNER RADII)
	TYPE III BARRICADE WITH FLASHING LIGHTS
	PAVEMENT MARKING REMOVAL
	DIRECTION OF TRAFFIC PATTERNS



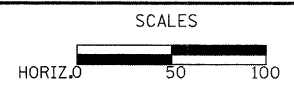
DATE	
BY	
SURVEYED	
PLOTTED	
TEMPLATE	
NOTE BOOK	
AREAS CHECKED	
NO.	

DATE	
BY	
SURVEYED	
PLOTTED	
TEMPLATE	
NOTE BOOK	
AREAS CHECKED	
NO.	

CIVILTECH
 450 E Devon Ave, Suite 300
 Itasca, Illinois 60143
 Tel: 630.773.3900 Fax: 630.773.3975
 www.civiltechinc.com

DESIGNED - PK	REVISED -
DRAWN - PK	REVISED -
CHECKED - RTM	REVISED -
DATE - 3/25/2011	REVISED -

**STATE OF ILLINOIS
 DEPARTMENT OF TRANSPORTATION**



STAGES OF CONSTRUCTION - STAGE 3

SHEET NO. 3 OF 3 SHEETS STA. 700+44.8 TO STA. 706+42.0

F.A.P. RTE. 361	SECTION 06-00214-27-BR	COUNTY KANE	TOTAL SHEETS 87	SHEET NO. 19
CONTRACT NO. 63595				
FED. ROAD DIST. NO. 1 [ILLINOIS] FED. AID PROJECT				