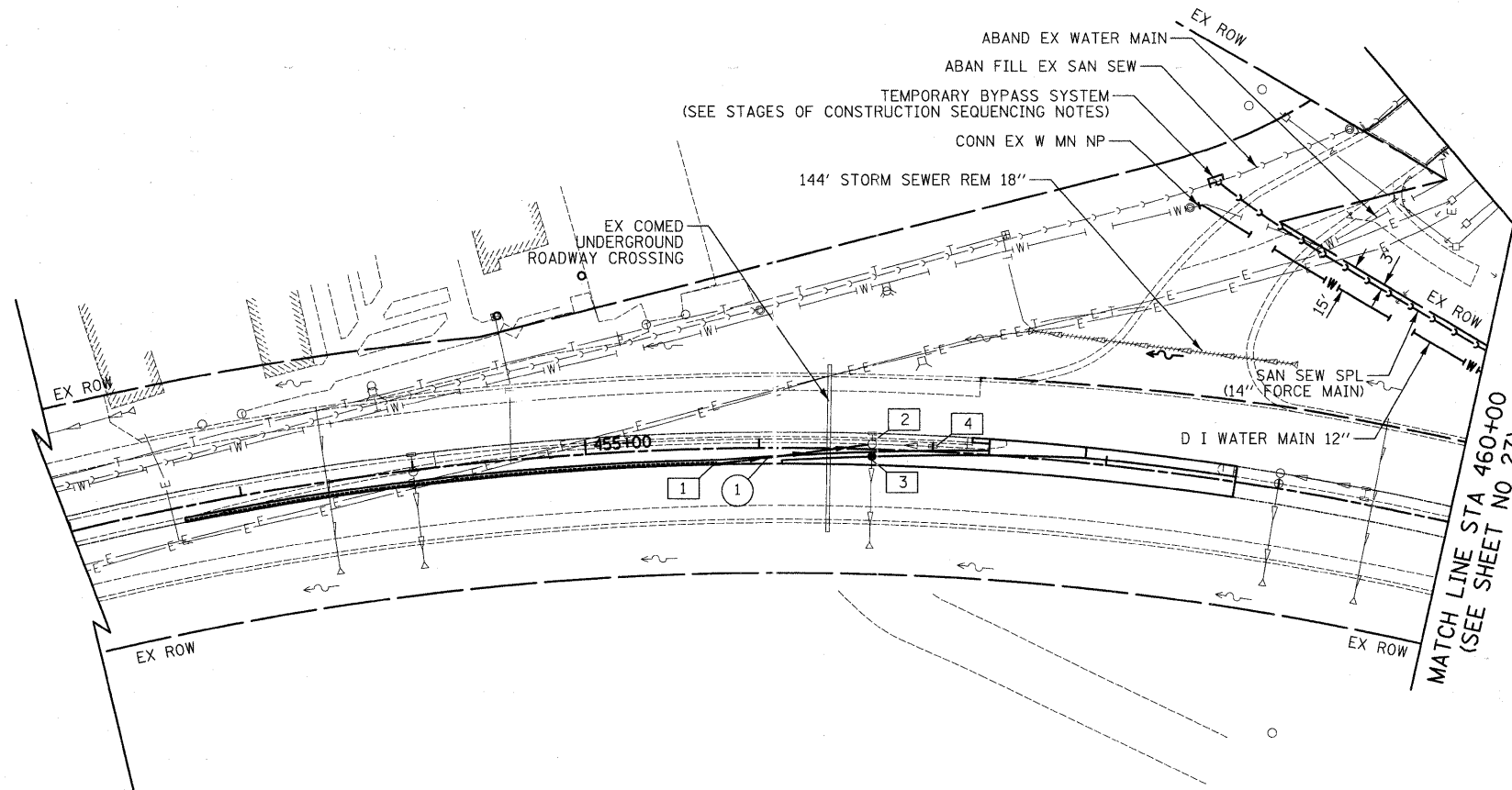


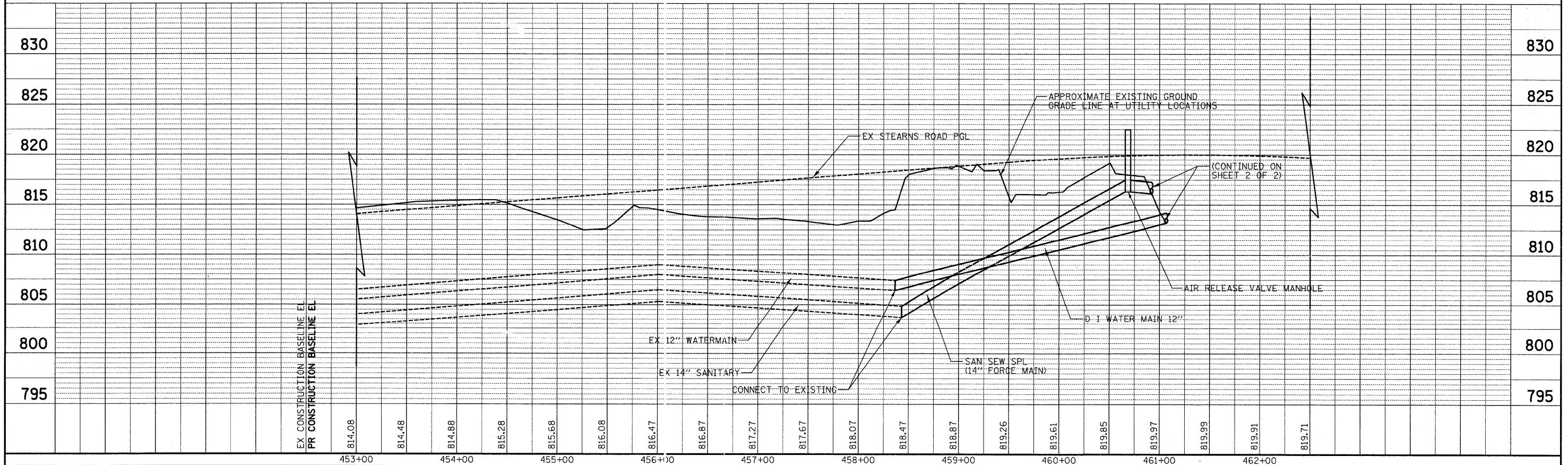
**LEGEND:**

- EXISTING DITCH FLOW
- EXISTING DITCH FLOW
- STRUCTURE TO BE ADJUSTED
- STRUCTURE TO BE REMOVED



- 1 STA 455+75.0, 9.0' RT INLETS TA T24F&G RIM = 816.28 INV = 813.33 (12" E)
- 2 STA 456+65.0, 3.0' RT CB ADJUST GRATES T8 EX RIM = 816.81 PR RIM = 817.24 INV = 812.60 (12" W)
- 3 STA 456+65.0, 4.0' RT CB TA 4 DIA T24F&G RIM = 816.92 INV = 812.48 (EX 12" N) INV = 812.46 (EX 12" S)
- 4 STA 457+00.0, 3.0' RT INLETS ADJUST GRATES T8 EX RIM = 817.09 PR RIM = 817.50
- 1 73' STORM SEW CL A 1, 12" @ 1.00% TRENCH BACKFILL = 4 CU YD

STEARNS ROAD



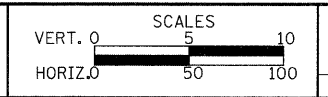
DATE	
BY	
SURVEYED	
PLOTTED	
TEMPLATE	
NOTE BOOK	
AREAS CHECKED	
NO.	

DATE	
BY	
ORIGINAL SURVEY	
PLOTTED	
TEMPLATE	
NOTE BOOK	
AREAS CHECKED	
NO.	

**CIVILTECH**  
 450 E Devon Ave, Suite 300  
 Itasca, Illinois 60143  
 Tel: 630.773.3900 Fax: 630.773.3975  
 www.civiltechinc.com

DESIGNED - PK	REVISED -
DRAWN - PK	REVISED -
CHECKED - RTM	REVISED -
DATE - 3/25/2011	REVISED -

**STATE OF ILLINOIS**  
**DEPARTMENT OF TRANSPORTATION**



**DRAINAGE AND UTILITIES**  
 SHEET NO. 1 OF 2 SHEETS STA. 453+00 TO STA. 460+00

F.A.P. RTE. 361	SECTION 06-00214-27-BR	COUNTY KANE	TOTAL SHEETS 87	SHEET NO. 26
CONTRACT NO. 63595				
FED. ROAD DIST. NO. 1 ILLINOIS FED. AID PROJECT				