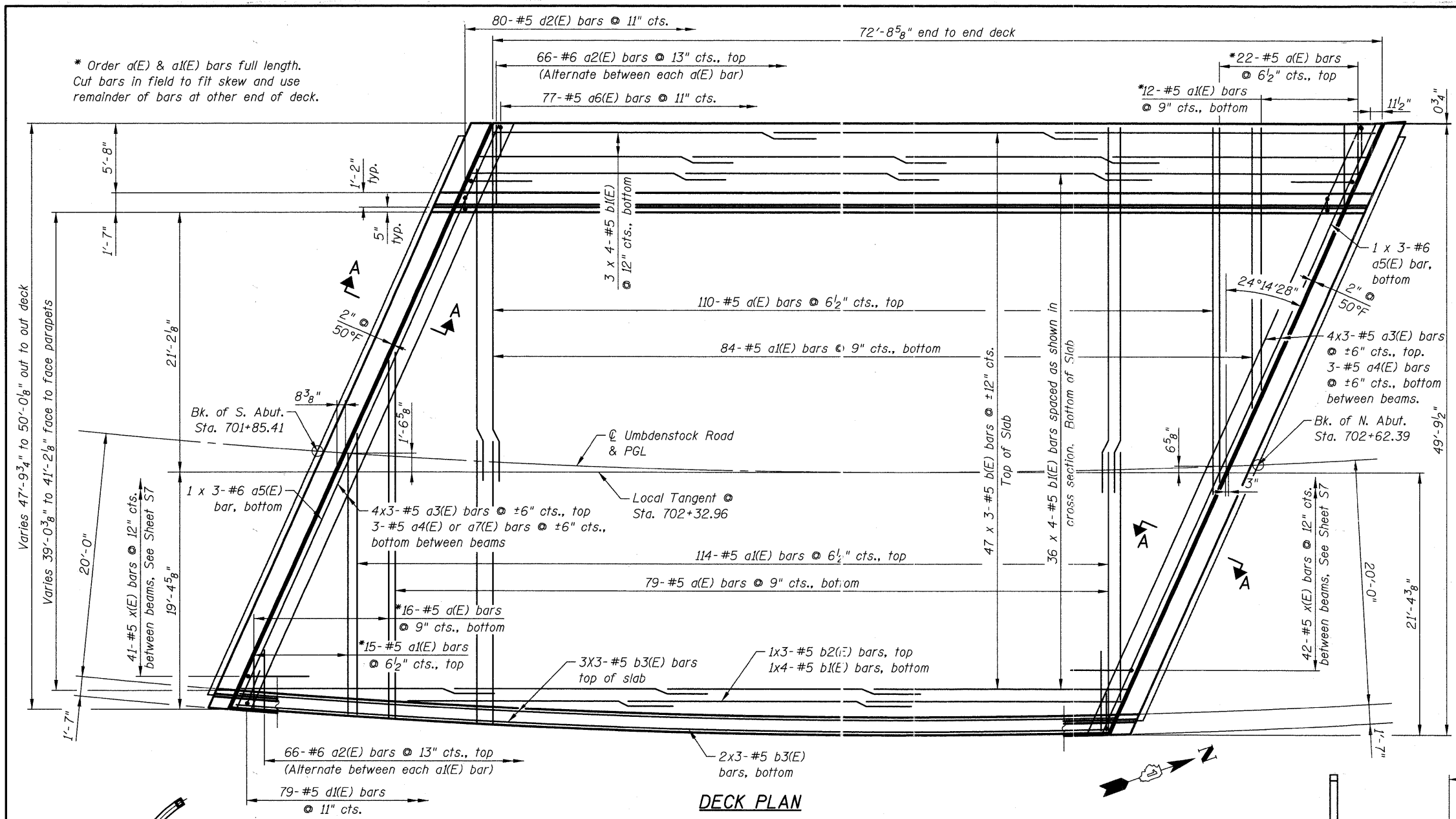
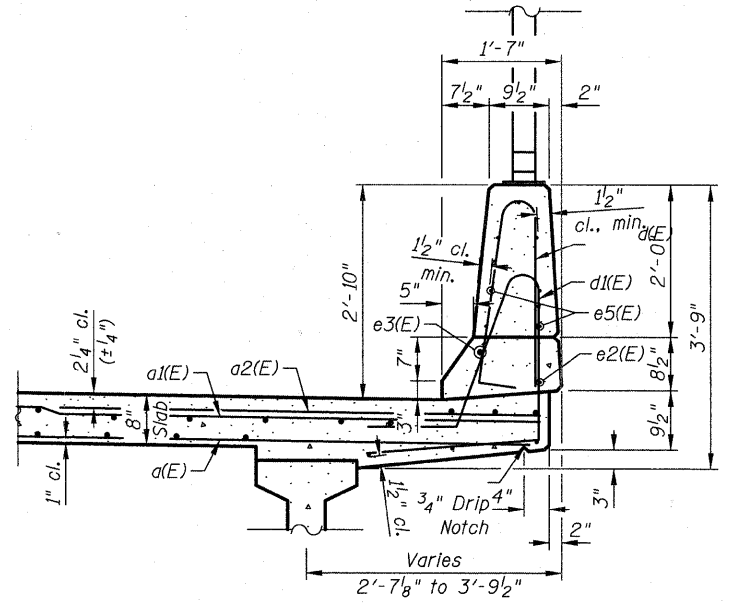


\* Order a(E) & a1(E) bars full length.  
Cut bars in field to fit skew and use remainder of bars at other end of deck.



- Notes:
1. See Sheet S7 for superstructure details and Bill of Materials, Bar Diagrams and Reinforcement Schedule
  2. Bars indicated thus 12 x 2-#5 etc. indicates 12 lines of bars with 2 lengths per line.
  3. See Sheet S7 for Section A-A and diaphragm details.
  4. See sheet S7 for parapet elevations.

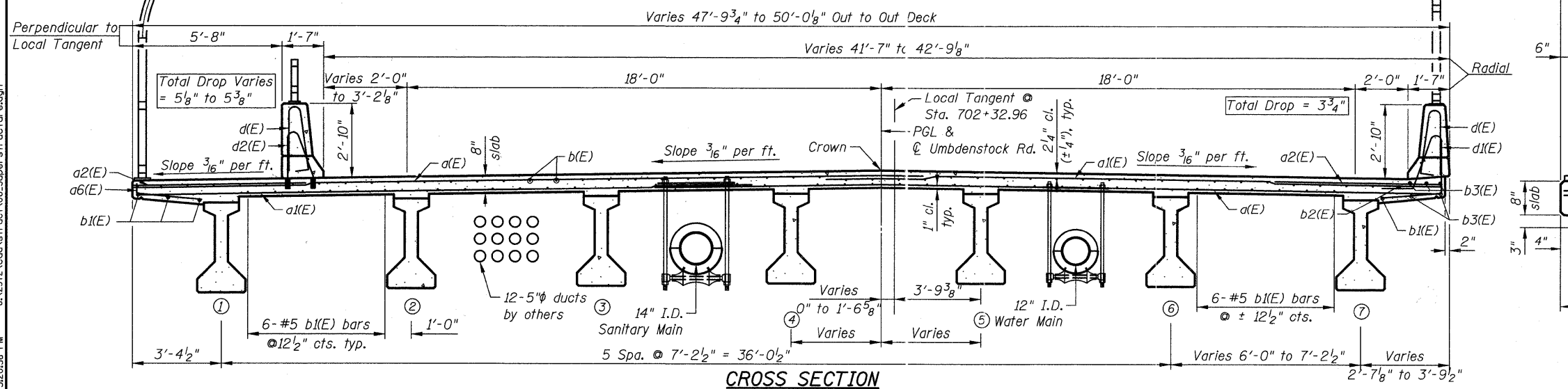


**SECTION THRU EAST PARAPET**

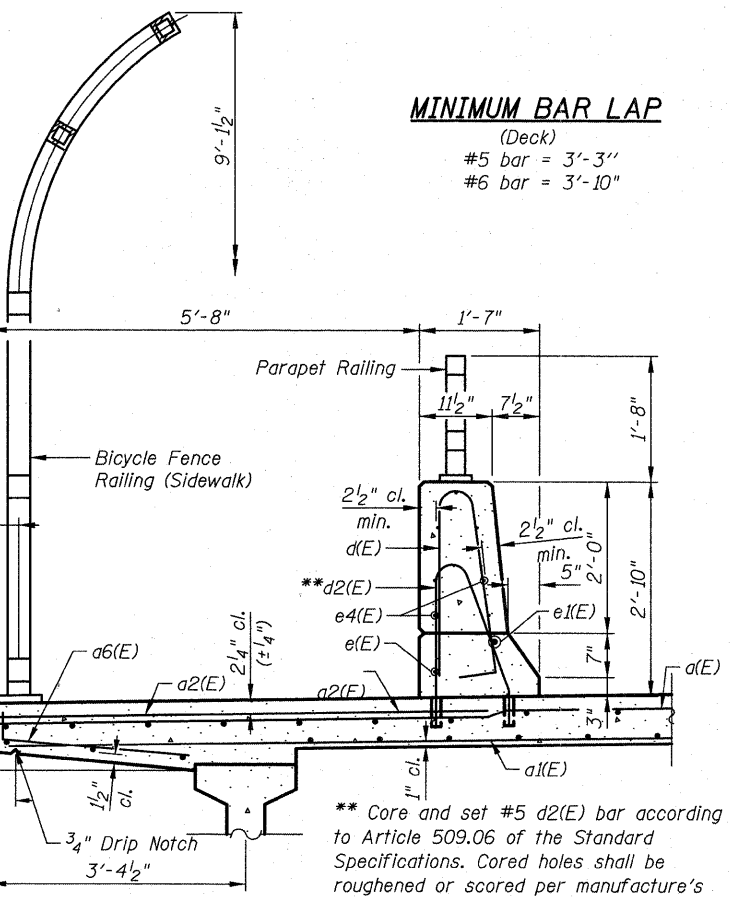
(All edges have a 3/4\"/>

**MINIMUM BAR LAP**

(Deck)  
#5 bar = 3'-3\"/>



**CROSS SECTION**  
(Looking North)



**SECTION THRU WEST PARAPET**

(All edges have a 3/4\"/>

\*\* Core and set #5 d2(E) bar according to Article 509.06 of the Standard Specifications. Cored holes shall be roughened or scored per manufacture's recommendations. Maximum depth of hole shall not exceed 6\"/>

3:20:38 PM J:\2372\Cad\Struct\06\_Superstructure.edgn  
 4/7/2011

**CIVILTECH**  
 450 E Devon Ave, Suite 300  
 Itasca, Illinois 60143  
 Tel: 630.773.3900 Fax: 630.773.3975  
 www.civiltechinc.com

DESIGNED - D. Atkins	REVISED - 4-11-11
DRAWN - D. Atkins	REVISED -
CHECKED - G. Hottelstad	REVISED -
DATE - March 25, 2011	REVISED -

**STATE OF ILLINOIS**  
**DEPARTMENT OF TRANSPORTATION**

**SUPERSTRUCTURE**  
**UMBENSTOCK ROAD OVER CC&P RR**  
**STRUCTURE NO. 045-3162**  
 SHEET NO. S6 OF S28 SHEETS

F.A.P. RTE. 361	SECTION 06-00214-27-BR	COUNTY KANE	TOTAL SHEETS 87	SHEET NO. 39
CONTRACT NO. 63595				
FED. ROAD DISTRICT 1 ILLINOIS FED. AID PROJECT				