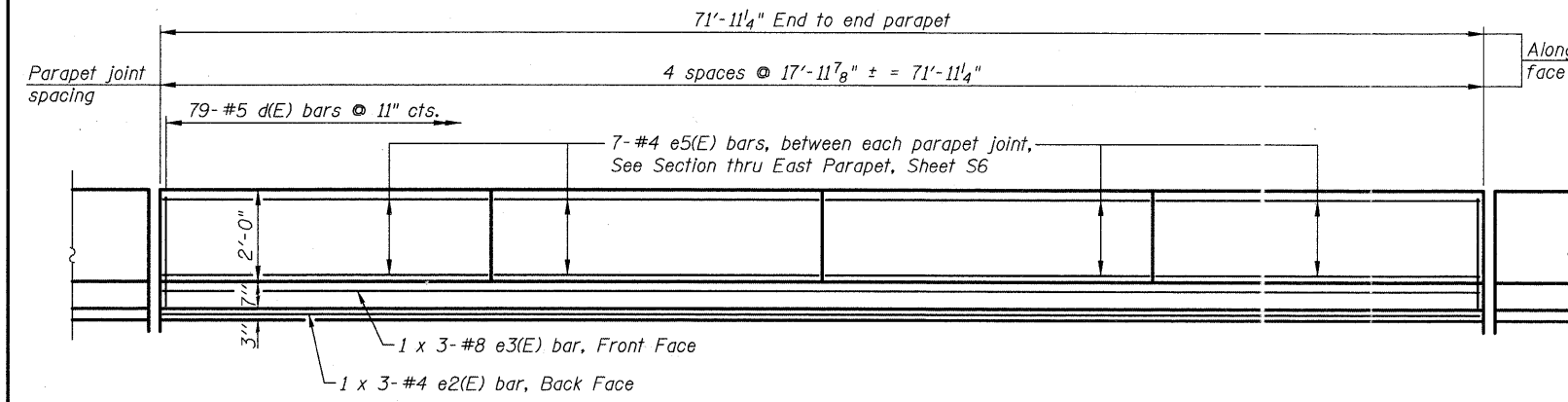
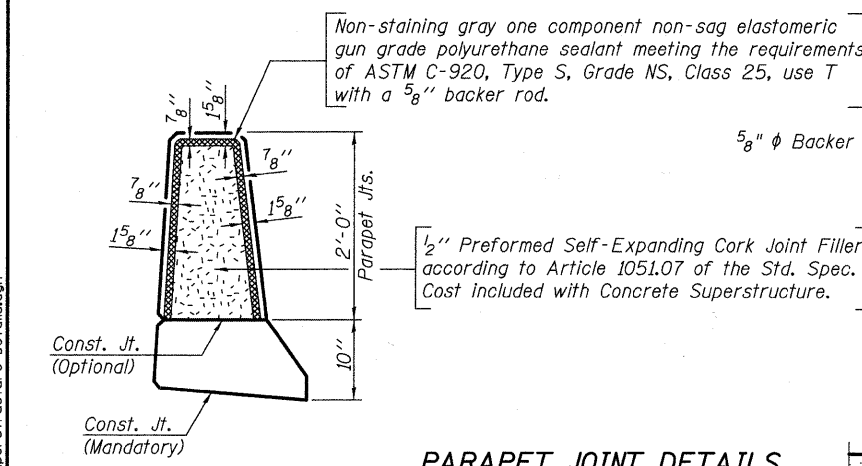


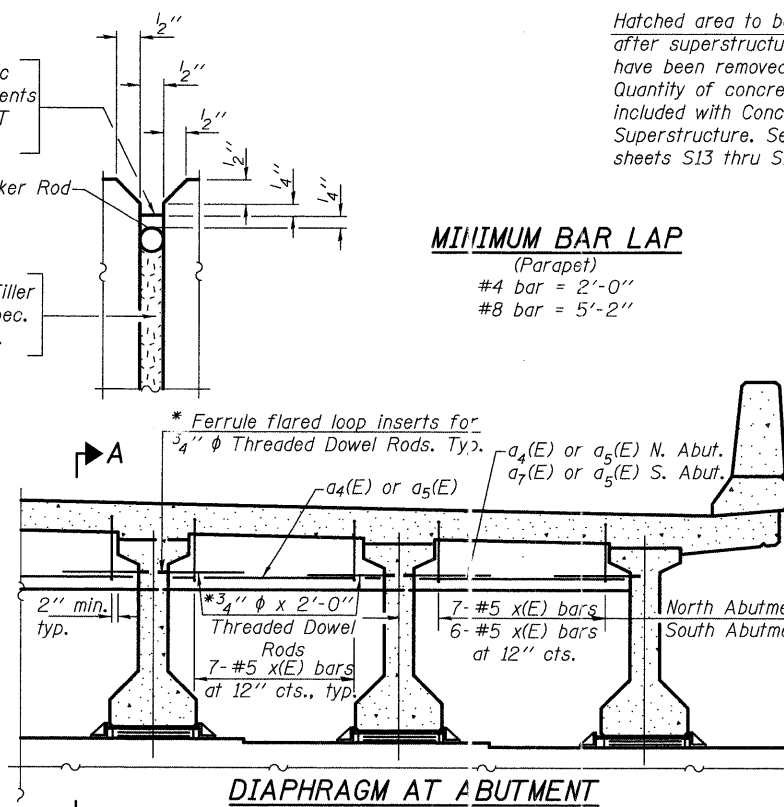
**INSIDE ELEVATION OF WEST PARAPET**  
(Looking West)



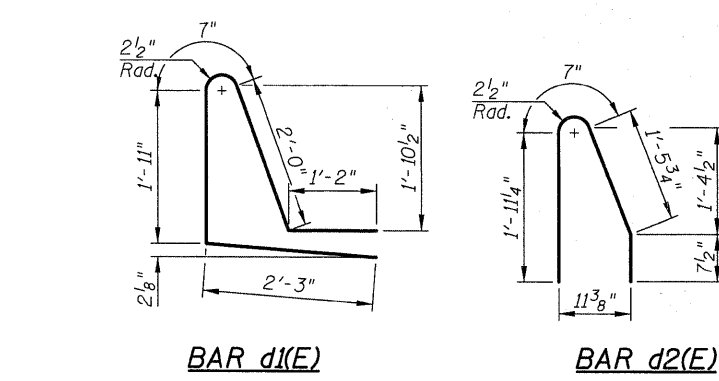
**INSIDE ELEVATION OF EAST PARAPET**  
(Looking East)



**PARAPET JOINT DETAILS**

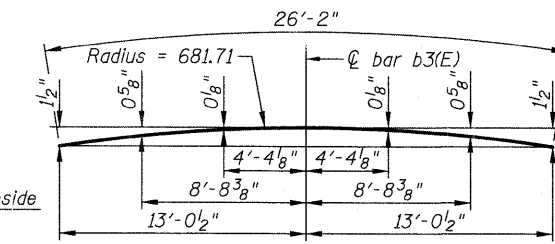


**DIAPHRAGM AT ABUTMENT**

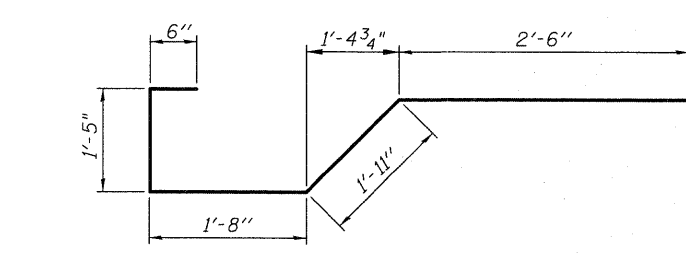


**BAR d1(E)**

**BAR d2(E)**



**BAR b3(E)**

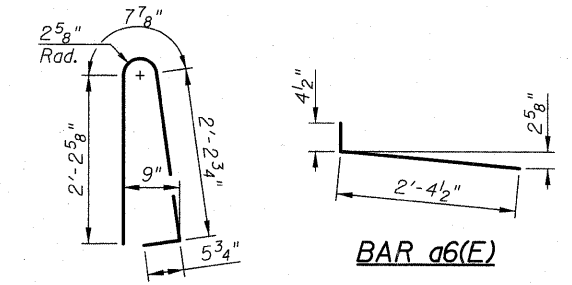


**BAR x(E)**

**SUPERSTRUCTURE  
BILL OF MATERIAL**

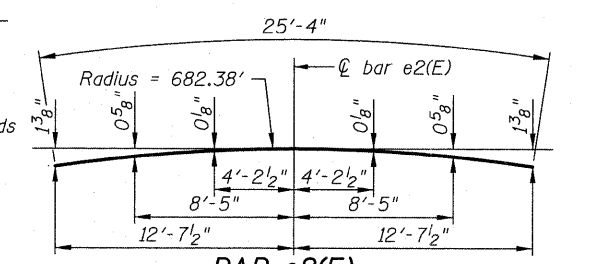
Bar	No.	Size	Length	Shape
d(E)	227	#5	30'-0"	—
d1(E)	225	#5	22'-11"	—
d2(E)	132	#6	6'-6"	—
a3(E)	24	#5	20'-4"	—
a4(E)	33	#5	7'-0"	—
a5(E)	6	#6	18'-3"	—
a6(E)	77	#5	2'-9"	—
a7(E)	3	#5	5'-9"	—
b(E)	141	#5	26'-4"	—
b1(E)	160	#5	20'-7"	—
b2(E)	3	#5	21'-8"	—
b3(E)	15	#5	26'-2"	—
d(E)	159	#5	5'-7"	—
d1(E)	79	#5	7'-11"	—
d2(E)	80	#5	4'-8"	—
e(E)	3	#4	25'-6"	—
e1(E)	3	#8	27'-8"	—
e2(E)	3	#4	25'-4"	—
e3(E)	3	#8	27'-5"	—
e4(E)	28	#4	17'-11"	—
e5(E)	28	#4	17'-9"	—
x(E)	83	#5	8'-0"	—
Reinforcement Bars, Epoxy Coated			Pound	26,580
Concrete Superstructure			Cu. Yds.	114.2
Bridge Deck Grooving			Sq. Yds.	307
Protective Coat			Sq. Yds.	442

Bars indicated thus 1 x 3-#8 etc. indicates 1 line of bars with 3 lengths per line.

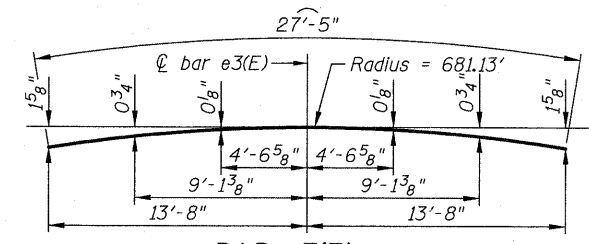


**BAR d(E)**

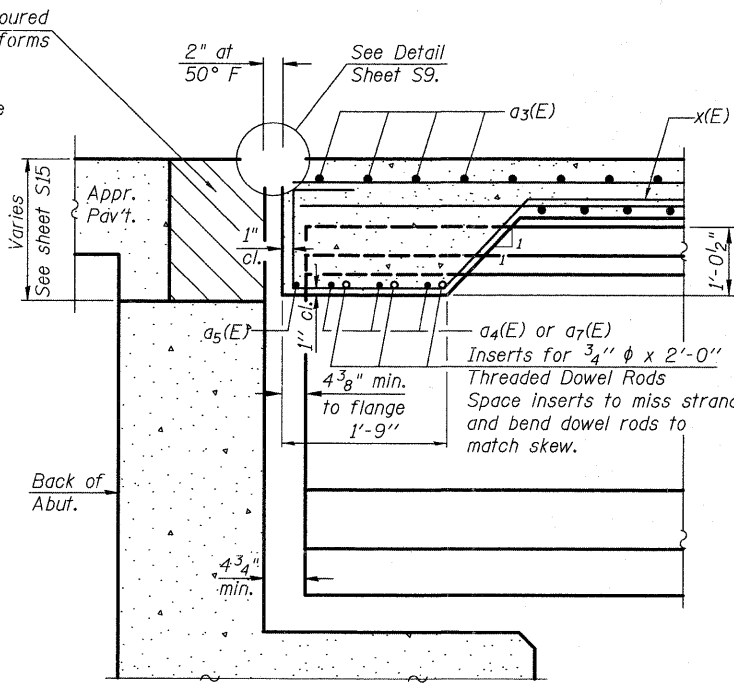
**BAR d6(E)**



**BAR e2(E)**



**BAR e3(E)**



**SECTION A-A  
AT ABUTMENT**  
(at Rt. L.S.)

Notes:  
The x(E) bars shall be placed parallel to the beams.  
Spacing for these bars shall be at right angles to the beams.

4/16/32 PM J:\2372\road\structure\07-Superstructure-Details.dgn