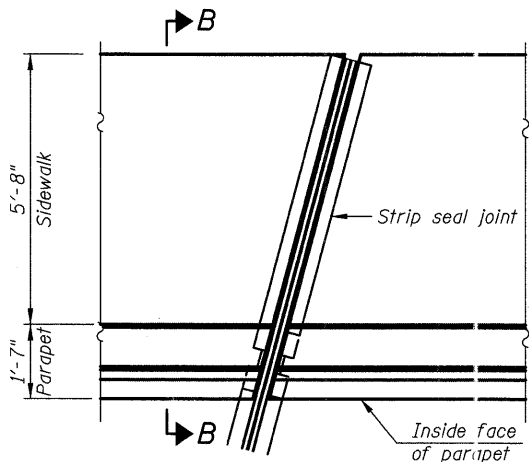
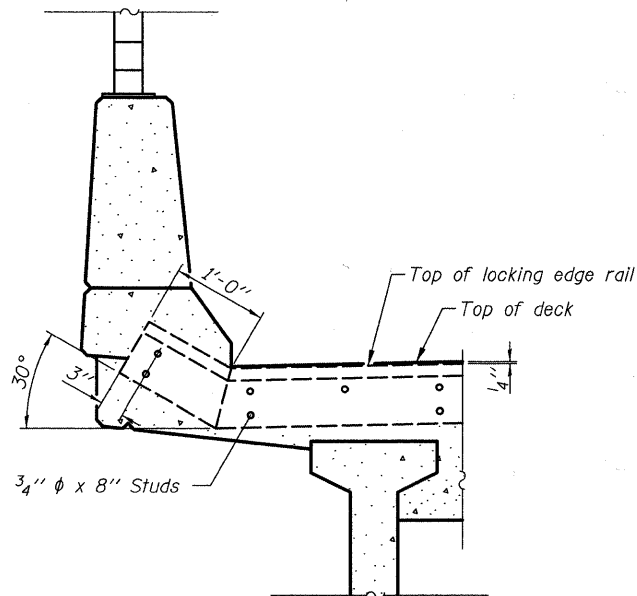


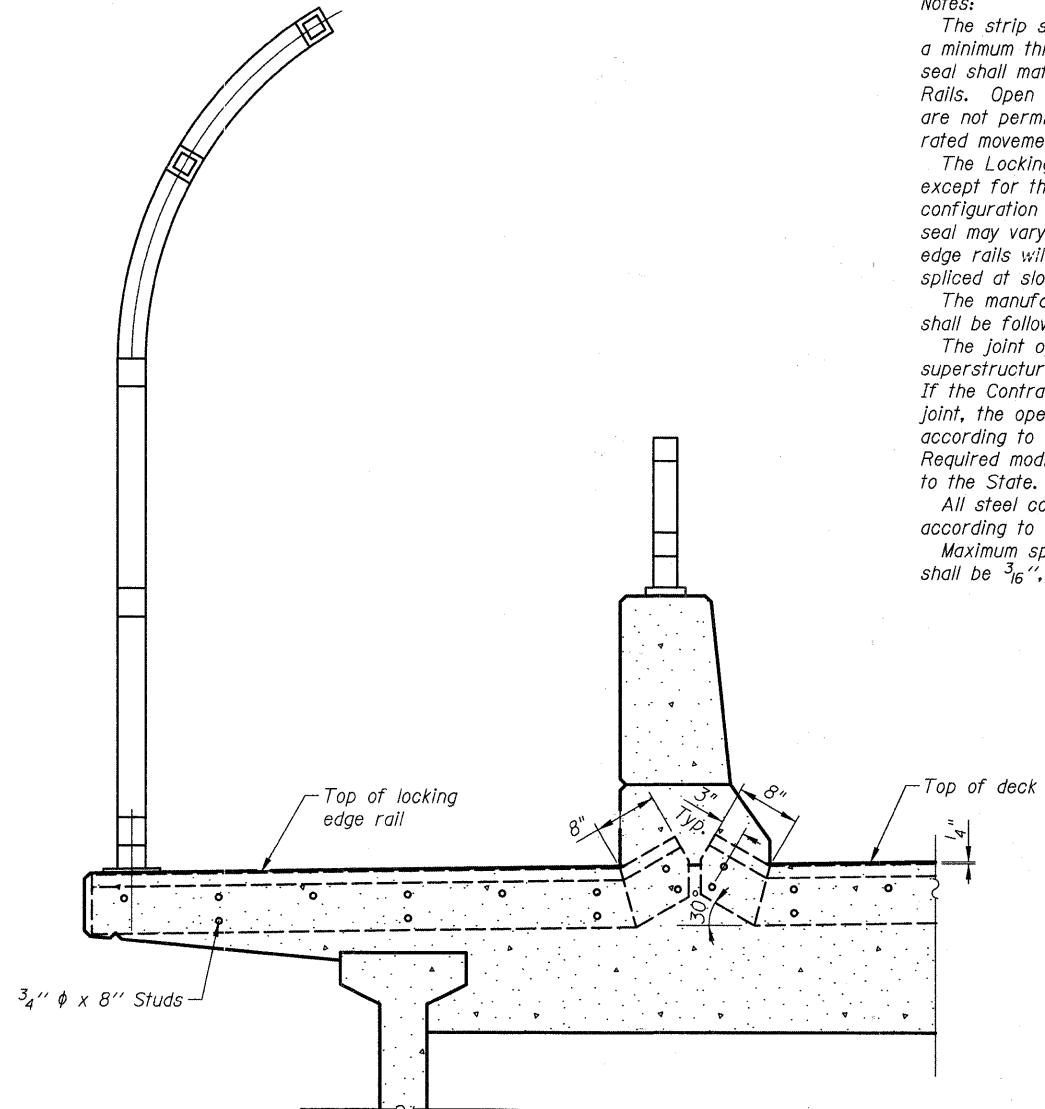
PLAN
(For skews $\leq 30^\circ$)



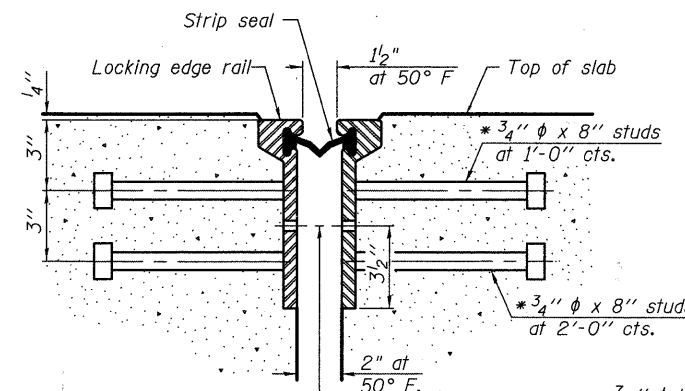
PLAN - INTERIOR DECK PARAPET
(For skews $\leq 30^\circ$)



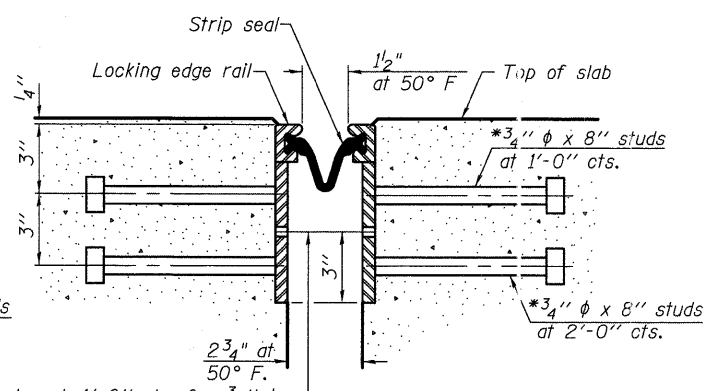
SECTION A-A



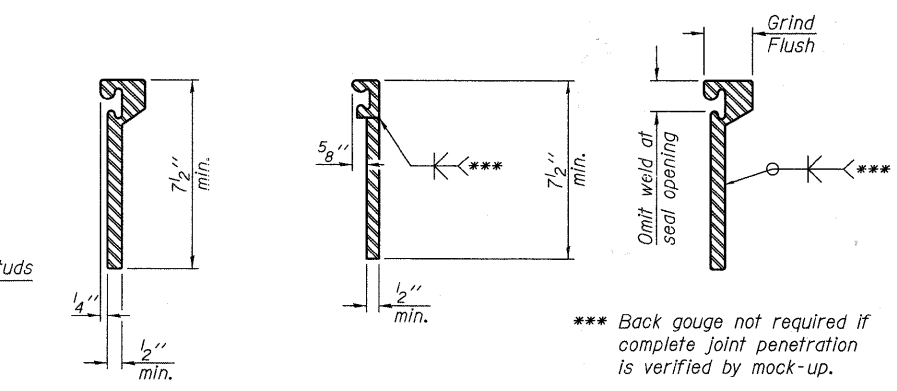
SECTION B-B



SECTION THRU ROLLED RAIL JOINT



SECTION THRU WELDED RAIL JOINT



ROLLED EXTRUDED RAIL **WELDED RAIL** **LOCKING EDGE RAIL SPLICE**

*** Back gouge not required if complete joint penetration is verified by mock-up.

The inside of the locking edge rail groove shall be free of weld residue.
Rolled rail shown, welded rail similar.

Notes:
The strip seal shall be made continuous and shall have a minimum thickness of 1/4". The configuration of the strip seal shall match the configuration of the Locking Edge Rails. Open or "webbed" strip seal gland configurations are not permitted. The gland shall be sized for a maximum rated movement of 4 inches.
The Locking Edge Rails depicted are conceptual only, except for the minimum dimensions shown. The actual configuration of the Locking Edge Rails and matching strip seal may vary from manufacturer to manufacturer. Flanged edge rails will not be allowed. Locking Edge Rails may be spliced at slope discontinuities.
The manufacturer's recommended installation methods shall be followed.
The joint opening and deck dimensions detailed on the superstructure are based on a rolled rail expansion joint. If the Contractor elects to use the welded rail expansion joint, the opening and deck dimensions shall be modified according to the dimensions detailed on this sheet. Required modifications shall be made at no additional cost to the State.
All steel components shall be galvanized after fabrication according to Article 520.03 of the Standard Specifications.
Maximum space between rail segments at stage lines shall be 3/16", sealed with a suitable sealant.

J:\V2372\cc\struct\09_Prefomed Joint Strip Seal.dgn
 3:20:41PM
 4/17/2011

CIVILTECH
 450 E Devon Ave, Suite 300
 Itasca, Illinois 60143
 Tel: 630.773.3900 Fax: 630.773.3975
 www.civiltechinc.com

DESIGNED - D. Atkins	REVISED - 4-11-11
DRAWN - D. Atkins	REVISED -
CHECKED - G. Hatlestad	REVISED -
DATE - March 25, 2011	REVISED -

STATE OF ILLINOIS
DEPARTMENT OF TRANSPORTATION

PREFORMED JOINT STRIP SEAL
UMBENSTOCK ROAD OVER CC&P RR
STRUCTURE NO. 045-3162

BILL OF MATERIAL			
Item	Unit	Total	
Prefomed Joint Strip Seal	Foot	87	108

F.A.P. RTE. 361	SECTION 06-00214-27-BR	COUNTY KANE	TOTAL SHEETS 87	SHEET NO. 42
SHEET NO. S9 OF S28 SHEETS				CONTRACT NO. 63595
FED. ROAD DISTRICT 1 ILLINOIS FED. AID PROJECT				

* Granular or solid flux filled headed studs conforming to Article 1006.32 of the Std. Specs., automatically end welded.