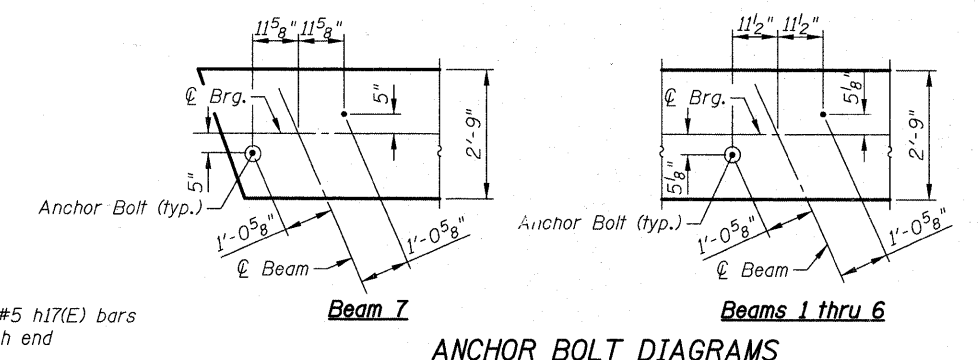


* Cut bars in field to miss utility openings in backwall.



MINIMUM BAR LAP

- #4 bar = 2'-11"
- #5 bar = 3'-8"
- #6 bar = 4'-5"
- #7 bar = 5'-10"

***#5-w10(E) bars to have 3'-3" laps

Notes:

Hatched area to be poured after superstructure false work has been removed. Quantity of concrete included with Concrete Superstructure.

Concrete sealer shall be applied to backwalls and bridge seats.

See sheet S15 for Reinforcement Schedule, Bar Bending Diagrams, Bill of Material, Section C-C and Details "A" & "B".

Bars indicated thus 9x2-#5 etc. indicates 9 lines of bars with 2 lengths per line.

J:\2372\cod\struct\3_South_Abument.dgn
 4/6/11 3:24:20 PM

CIVILTECH
 450 E Devon Ave, Suite 300
 Itasca, Illinois 60143
 Tel: 630.773.3900 Fax: 630.773.3975
 www.civiltechinc.com

DESIGNED -	D. Atkins	REVISED -	
DRAWN -	D. Atkins	REVISED -	
CHECKED -	G. Hatlestad	REVISED -	
DATE -	March 25, 2011	REVISED -	

**STATE OF ILLINOIS
 DEPARTMENT OF TRANSPORTATION**

**SOUTH ABUTMENT
 UMBDENSTOCK ROAD OVER CC&P RR
 STRUCTURE NO. 045-3162**

F.A.P. RTE.	SECTION	COUNTY	TOTAL SHEETS	SHEET NO.
361	06-00214-27-BR	KANE	87	46
CONTRACT NO. 63595				
FED. ROAD DISTRICT 1 ILLINOIS FED. AID PROJECT				