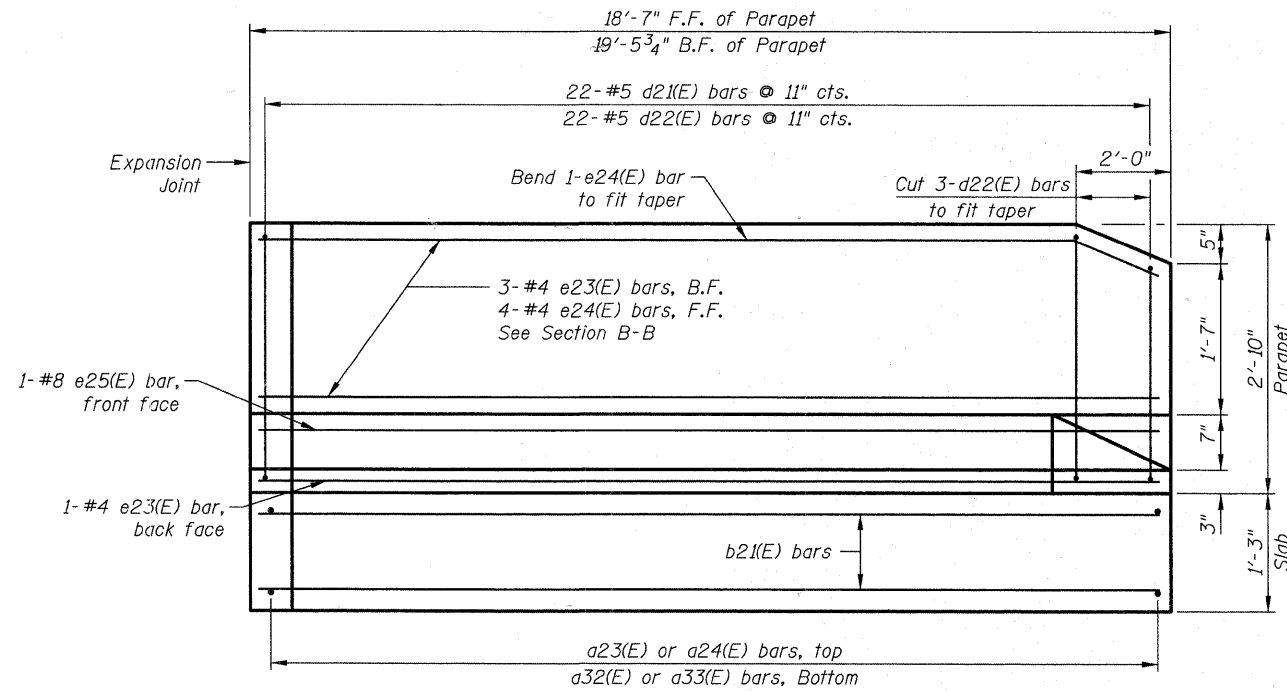
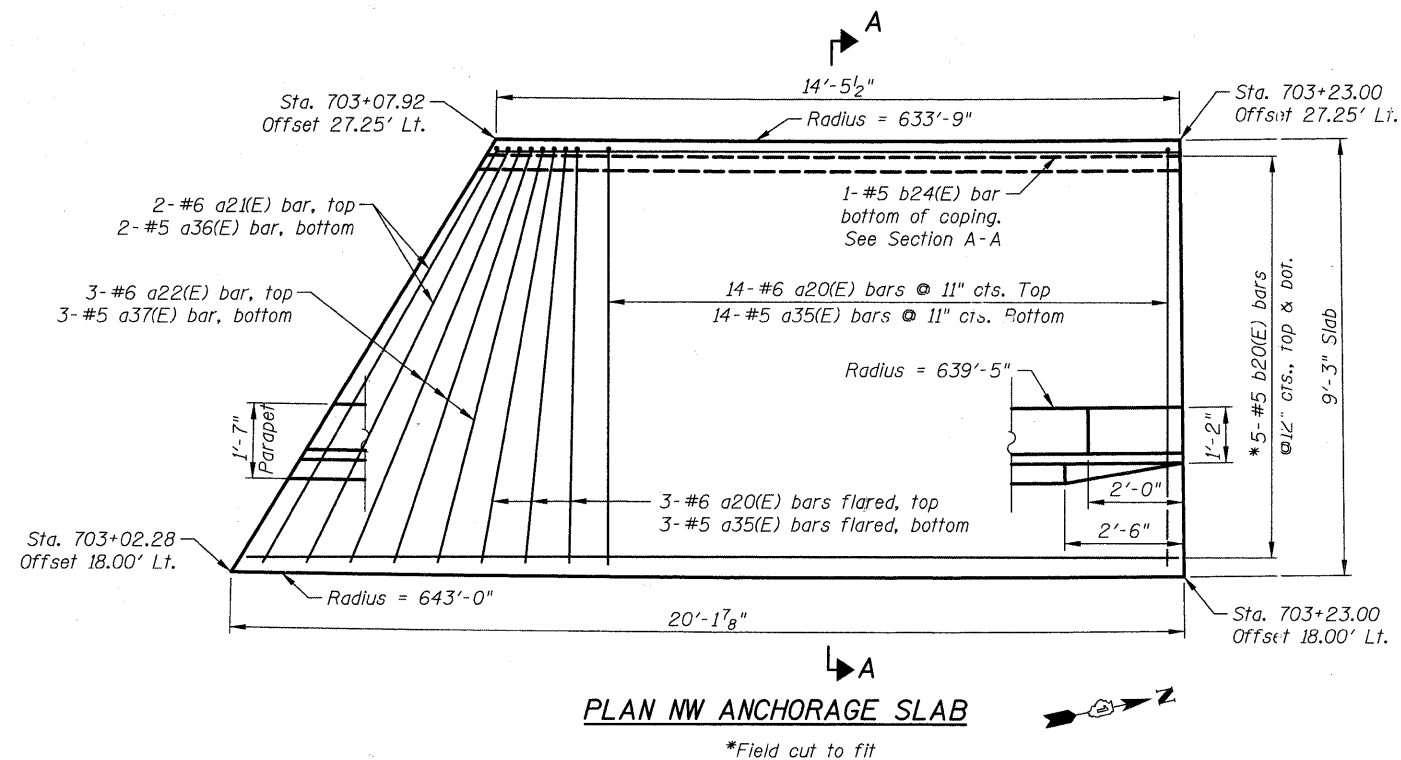


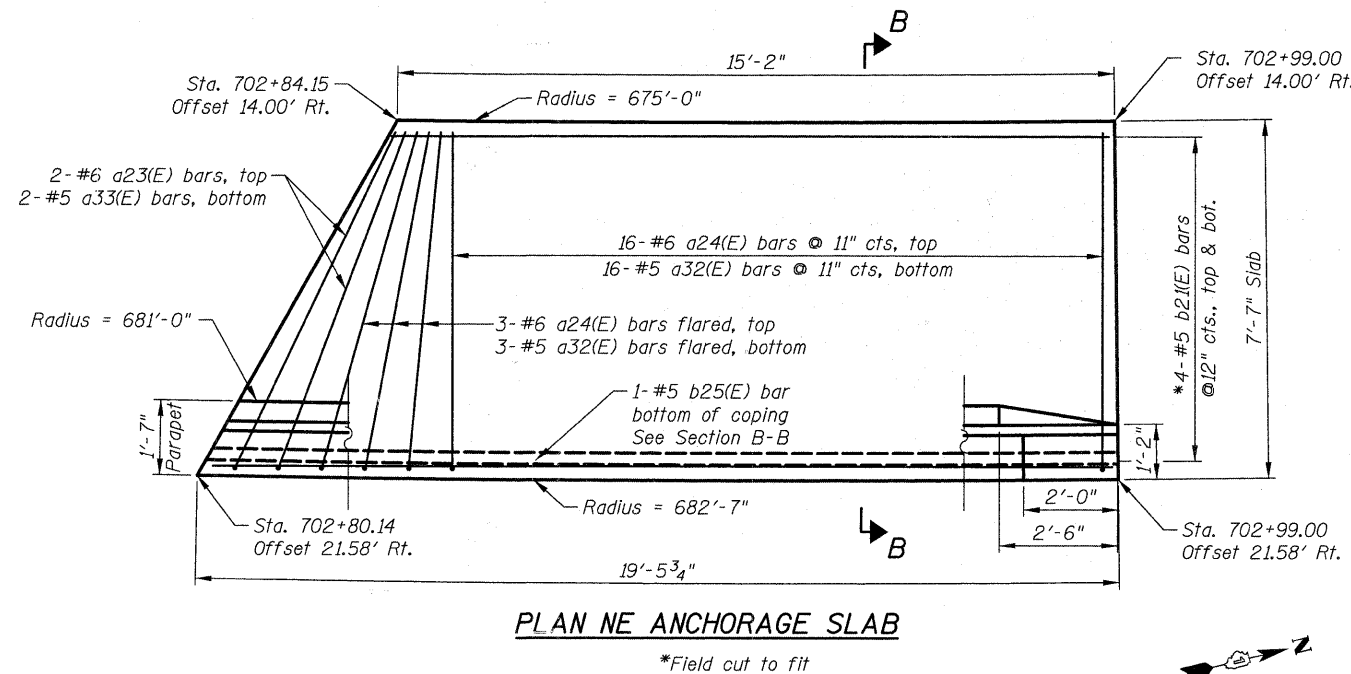
ELEVATION NW ANCHORAGE SLAB
(Front face of parapet)



ELEVATION NE ANCHORAGE SLAB
(Front face of parapet)



PLAN NW ANCHORAGE SLAB
*Field cut to fit



PLAN NE ANCHORAGE SLAB
*Field cut to fit

Notes:
1. See sheet S20 for Section A-A, B-B and Bill of Materials
2. See sheet S16 and S17 for MSE wall details.

J:\2372\cod\struct\NB_NW & NE Anchorage Slab.dgn
 4/16/11 PM
 3/24/2011

| | |
|------------------------|-----------|
| DESIGNED - D. Atkins | REVISED - |
| DRAWN - D. Atkins | REVISED - |
| CHECKED - G. Hatlestad | REVISED - |
| DATE - March 25, 2011 | REVISED - |

| | | | | |
|--------------------|------------------------|-------------|--|--------------|
| F.A.P. RTE. 361 | SECTION 06-00214-27-BR | COUNTY KANE | TOTAL SHEETS 87 | SHEET NO. 51 |
| CONTRACT NO. 63595 | | | FED. ROAD DISTRICT 1 ILLINOIS FED. AID PROJECT | |