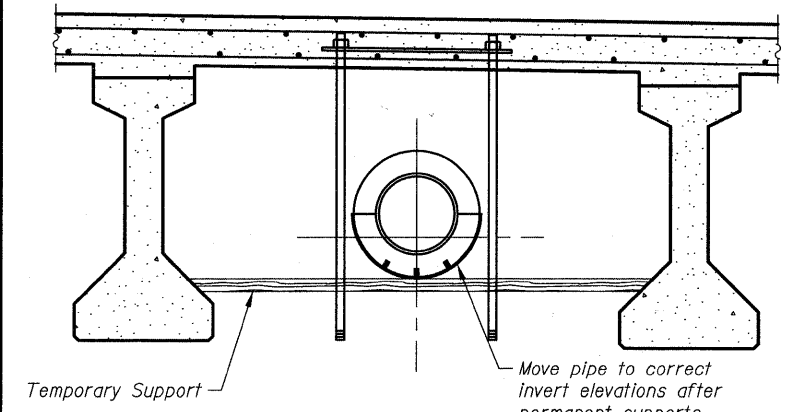
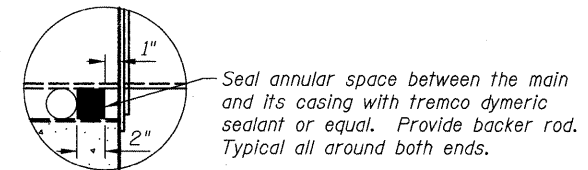
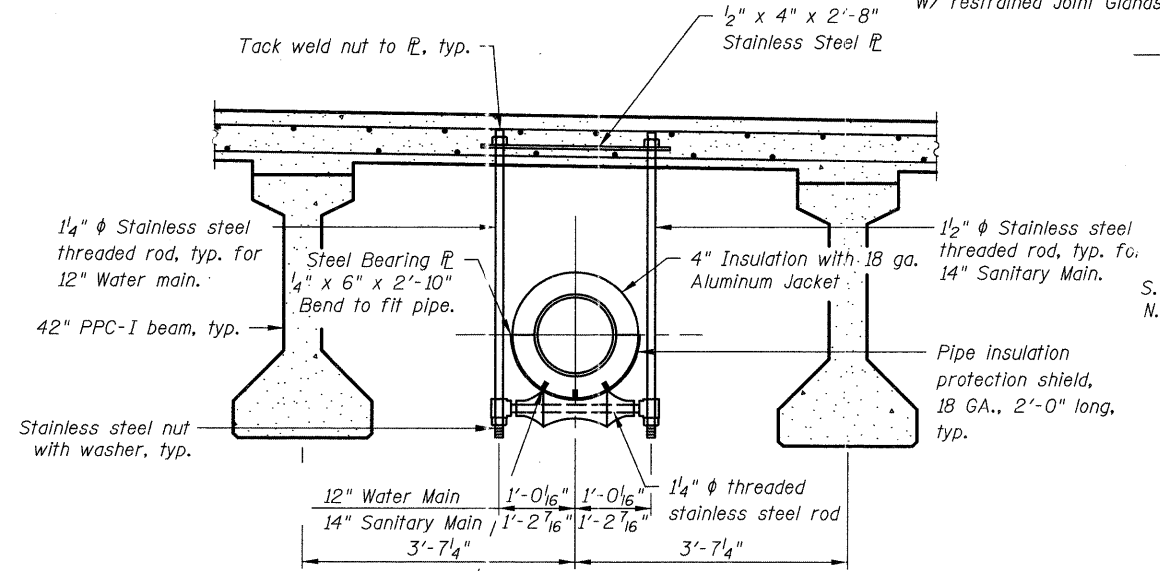
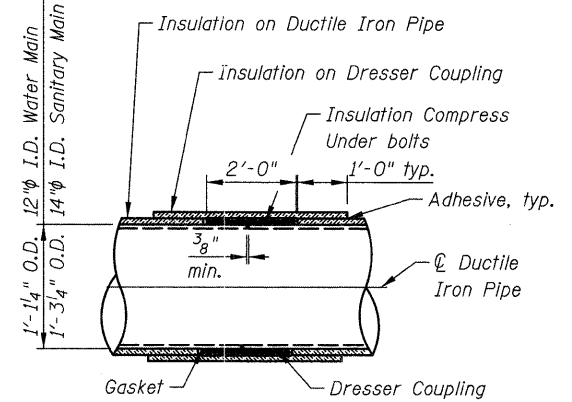


- LEGEND**
- DC - Indicates Dresser Coupling
  - - - Indicates Hanger Support
  - Exp. Jt - Indicates Expansion Joint

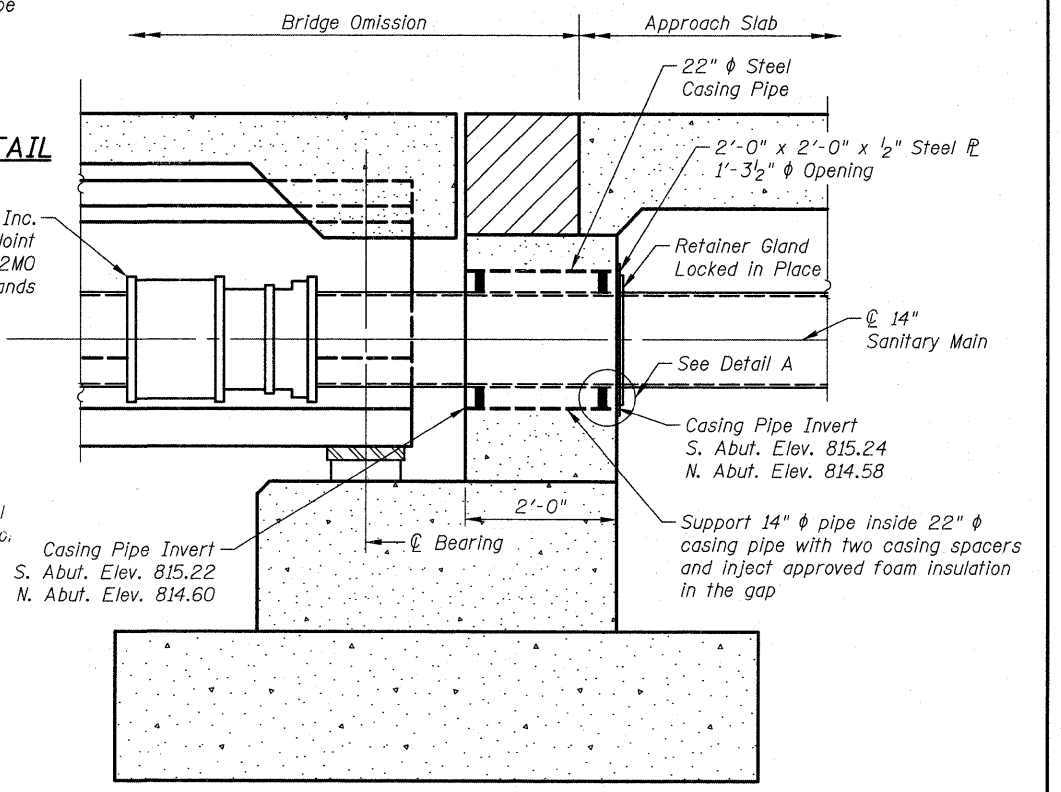
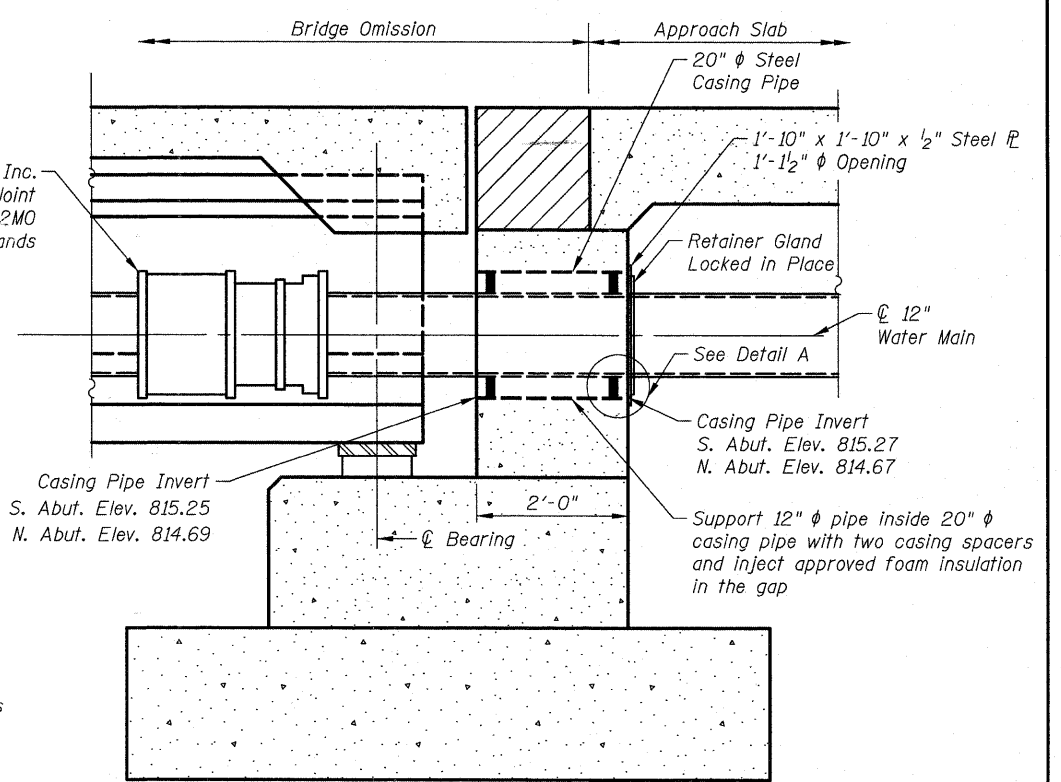


Contractor to provide temporary support for the Utilities until the concrete deck has cured. The analysis and calculations shall be submitted to the Engineer for approval. Temporary Support costs shall be included in the cost of the roadway pay items Water Main Casing Pipe and Sanitary Casing Pipe.

**WATER MAIN JOINT AND INSULATION DETAIL**



High density polyurethane segments. Curve ends to match pipe and shield. Glue to pipe and insulation, typ.



Notes:  
Furnishing and installing of Utility Hangers included in roadway pay items Water Main Casing Pipe and Sanitary Sewer Casing Pipe.  
Hatched area to be poured after superstructure false work has been removed. See Abutment Sheets S13 thru S15.

3/24/2011 4:16:55 PM J:\2312\cod\struct\24\_Utility Hanger\_Details.dgn

**CIVILTECH**  
450 E Devon Ave, Suite 300  
Itasca, Illinois 60143  
Tel: 630.773.3900 Fax: 630.773.3975  
www.civiltechinc.com

|                        |           |
|------------------------|-----------|
| DESIGNED - D. AtkIns   | REVISED - |
| DRAWN - D. AtkIns      | REVISED - |
| CHECKED - G. Hatlestad | REVISED - |
| DATE - March 25, 2011  | REVISED - |

**STATE OF ILLINOIS**  
**DEPARTMENT OF TRANSPORTATION**

**UTILITY HANGER DETAILS**  
**UMBENSTOCK ROAD OVER CC&P RR**  
**STRUCTURE NO. 045-3162**  
SHEET NO. S24 OF S28 SHEETS

|  |                        |             |                 |              |
|--|------------------------|-------------|-----------------|--------------|
| F.A.P. RTE. 361                                | SECTION 06-00214-27-BR | COUNTY KANE | TOTAL SHEETS 87 | SHEET NO. 57 |
| CONTRACT NO. 63595                             |                        |             |                 |              |
| FED. ROAD DISTRICT 1 ILLINOIS FED. AID PROJECT |                        |             |                 |              |