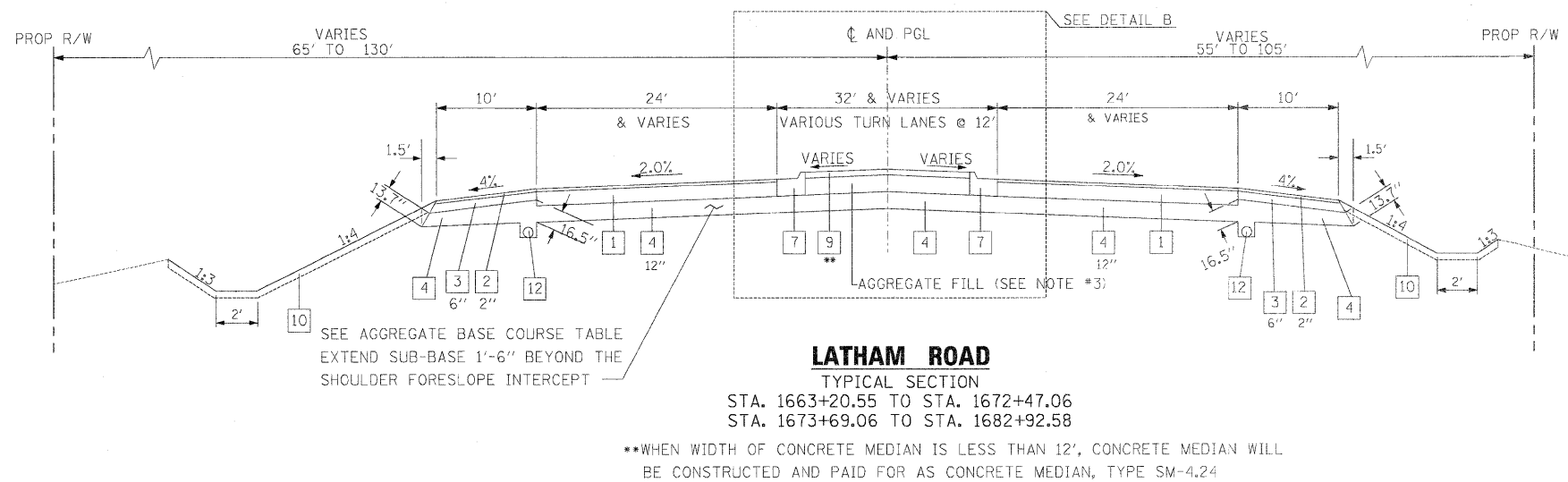
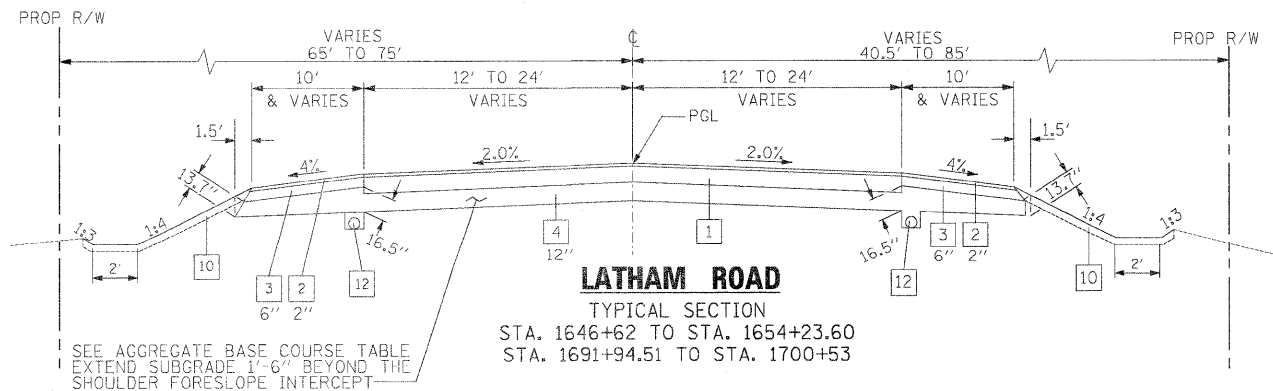
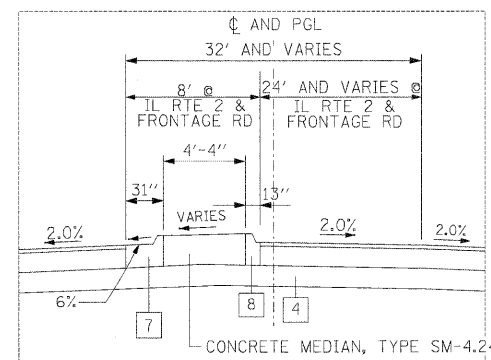
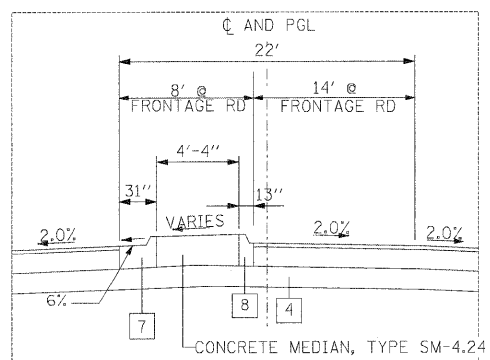


- PROPOSED:**
- 1 HOT-MIX ASPHALT PAVEMENT (FULL-DEPTH), 12.5" (2" POLYMERIZED HOT-MIX ASPHALT SURFACE COURSE, MIX "D", N70 10.5" HOT-MIX ASPHALT BINDER COURSE, IL-19.0, N70) SEE NOTE #2
 - 2 HOT-MIX ASPHALT SURFACE COURSE, MIX "C", N50 SEE NOTE #2
 - 3 HOT-MIX ASPHALT SHOULDERS
 - 4 SUB-BASE GRANULAR MATERIAL, TYPE A (SEE NOTE #4)
 - 5 AGGREGATE SHOULDERS, TYPE A
 - 6 INCIDENTAL HOT-MIX ASPHALT SURFACING, N50
 - 7 COMBINATION CONCRETE CURB & GUTTER, TYPE M-4.24
 - 8 COMBINATION CONCRETE CURB & GUTTER, TYPE M-4.06
 - 9 CONCRETE MEDIAN SURFACE (SEE NOTE #3)
 - 10 TOPSOIL FURNISH and PLACE, 6" OR 12" (SEE NOTE #5)
 - 11 AGGREGATE BASE COURSE, TYPE B (FOR DRIVEWAYS)
 - 12 PIPE UNDERDRAIN, 4" (SEE STANDARD DETAIL SUBSURFACE DRAINS)
 - 13 AGGREGATE BASE COURSE, TYPE A (SEE NOTE #4)



- NOTES:**
1. SEE PLAN SHEETS FOR ACTUAL LOCATION OF PROPOSED RIGHT OF WAY, AND PROPOSED ACCESS CONTROL LIMITS.
 2. SEE SHEET TYPICAL SECTIONS 1 FOR BITUMINOUS MIXTURE REQUIREMENTS AND HOT-MIX ASPHALT LIFTS THICKNESS.
 3. AGGREGATE FILL SHALL CONFORM TO ARTICLE 606.09, AND SHALL BE INCLUDED IN THE COST OF CONCRETE MEDIAN SURFACE, 4 INCH.
 4. SUB-BASE GRANULAR MATERIAL IS 12" ON IL 2 AND LATHAM ROAD. AGGREGATE BASE COURSE IS 15" ON FRONTAGE ROADS UNLESS OTHERWISE NOTED. SEE SHEET TYPICAL SECTION 4 FOR TABLE "IL 2 VARIABLE AGGREGATE BASE COURSE, TYPE A" AND FOR LOCATION OF GEOTECHNICAL FABRIC FOR GROUND STABILIZATION.
 5. TOPSOIL, IS 6" UNLESS OTHERWISE SHOWN. SEE SHEET TYPICAL SECTION 4 FOR TABLE "12" TOPSOIL APPLICATION AREAS".



I:\projects\1125A\Summary\1125A Summary\Typical\Structural\1125A Typical.dwg

USER NAME: thompson	DESIGNED STS/GC	REVISED
DRAWN RDT	CHECKED GC	REVISED
DATE 01-14-11		REVISED

STATE OF ILLINOIS
DEPARTMENT OF TRANSPORTATION

ILLINOIS ROUTE 2 TYPICAL SECTIONS 8 LATHAM ROAD	SCALE: N15	SHEET NO. 46 OF 530 SHEETS	STA. TO STA.
---	------------	----------------------------	--------------

F.A.P. RTE.	SECTION	COUNTY	TOTAL SHEETS	SHEET NO.
734	77-2-2 & 77-2B-1	WINNEBAGO	530	46
FED. ROAD DIST. NO. ILLINOIS FED. AID PROJECT			CONTRACT NO. 64813	