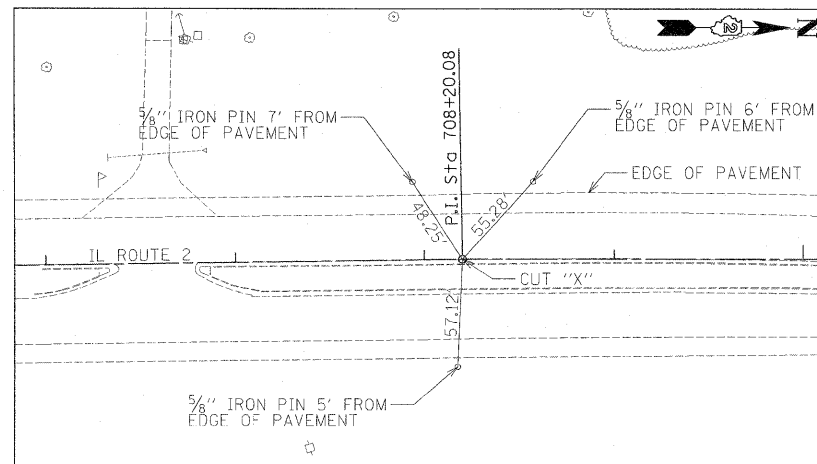
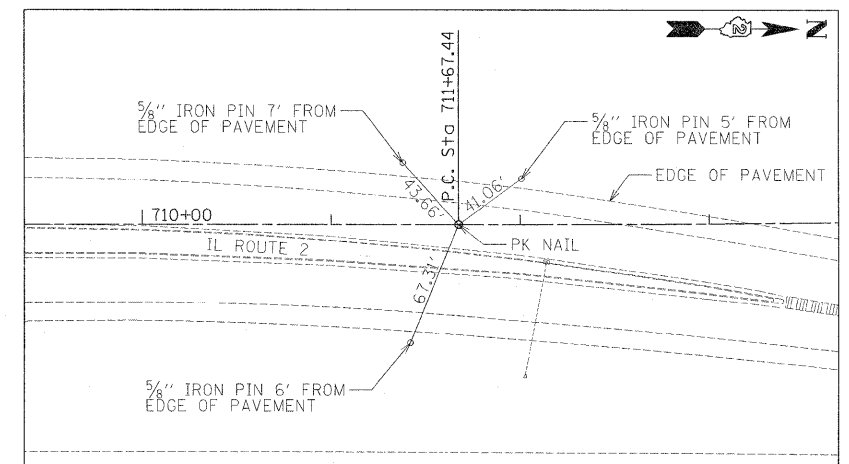


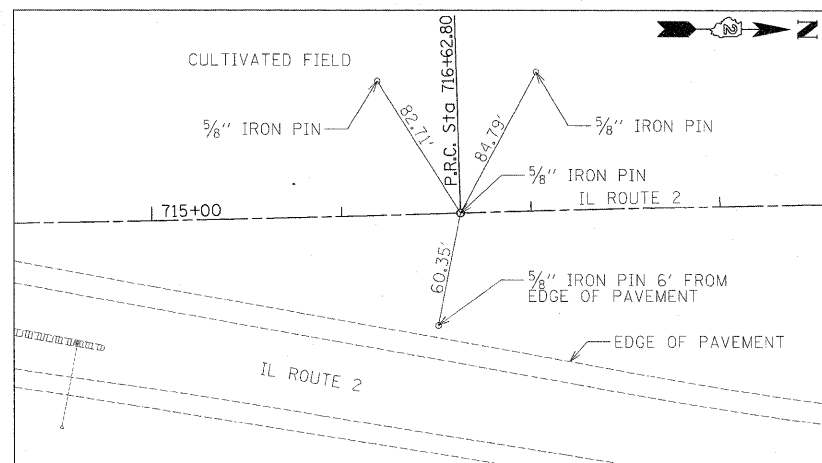
Centerline Swing Tie  
 Cut "X" POINT NO. 604  
 Sta 695+53.67  
 N 2066497.1670  
 E 2590902.2980  
 P.O.B. IL ROUTE 2



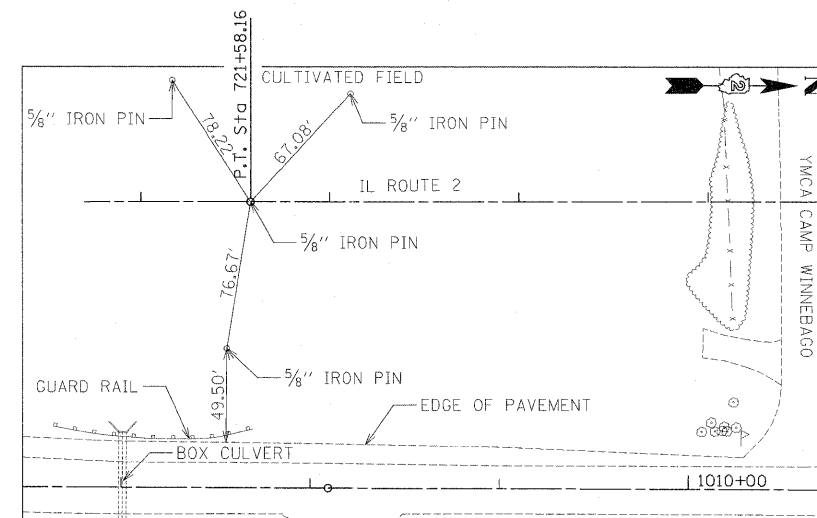
Centerline Swing Tie  
 Cut "X" POINT NO. 605  
 Sta 708+20.08  
 N 2067762.5870  
 E 2590852.3210  
 P.I. IL ROUTE 2



Centerline Swing Tie  
 PK Nail POINT NO. 606  
 Sta 711+67.44  
 N 2068109.8501  
 E 2590843.8205  
 P.C. IL ROUTE 2



Centerline Swing Tie  
 5/8" Iron Pin POINT NO. 607  
 Sta 716+62.80  
 N 2068604.8029  
 E 2590824.2025  
 P.R.C. IL ROUTE 2



Centerline Swing Tie  
 5/8" Iron Pin POINT NO. 608  
 Sta 721+58.16  
 N 2069099.7542  
 E 2590804.5845  
 P.T. IL ROUTE 2

P.C. = POINT OF CURVATURE  
 P.I. = POINT OF INTERSECTION  
 P.T. = POINT OF TANGENCY  
 P.O.B. = POINT OF BEGINNING  
 P.O.E. = POINT OF ENDING

USER NAME = zulkowd	DESIGNED STS/GC	REVISED -
	DRAWN RDT	REVISED -
PLOT SCALE = 50.0000 FT / IN.	CHECKED GC	REVISED -
PLOT DATE = 2/2/2011	DATE 01-14-11	REVISED -

**STATE OF ILLINOIS  
 DEPARTMENT OF TRANSPORTATION**

ILLINOIS ROUTE 2		F.A.P. RTE.	SECTION	COUNTY	TOTAL SHEETS	SHEET NO.
ALIGNMENT TIES (IL RTE 2)		734	77-2-2 & 77-2B-1	WINNEBAGO	530	50
SCALE: 1"=50'		SHEET NO. 50 OF 530 SHEETS		STA.	TO STA.	
		FED. ROAD DIST. NO.		ILLINOIS FED. AID PROJECT		

CONTRACT NO. 64813