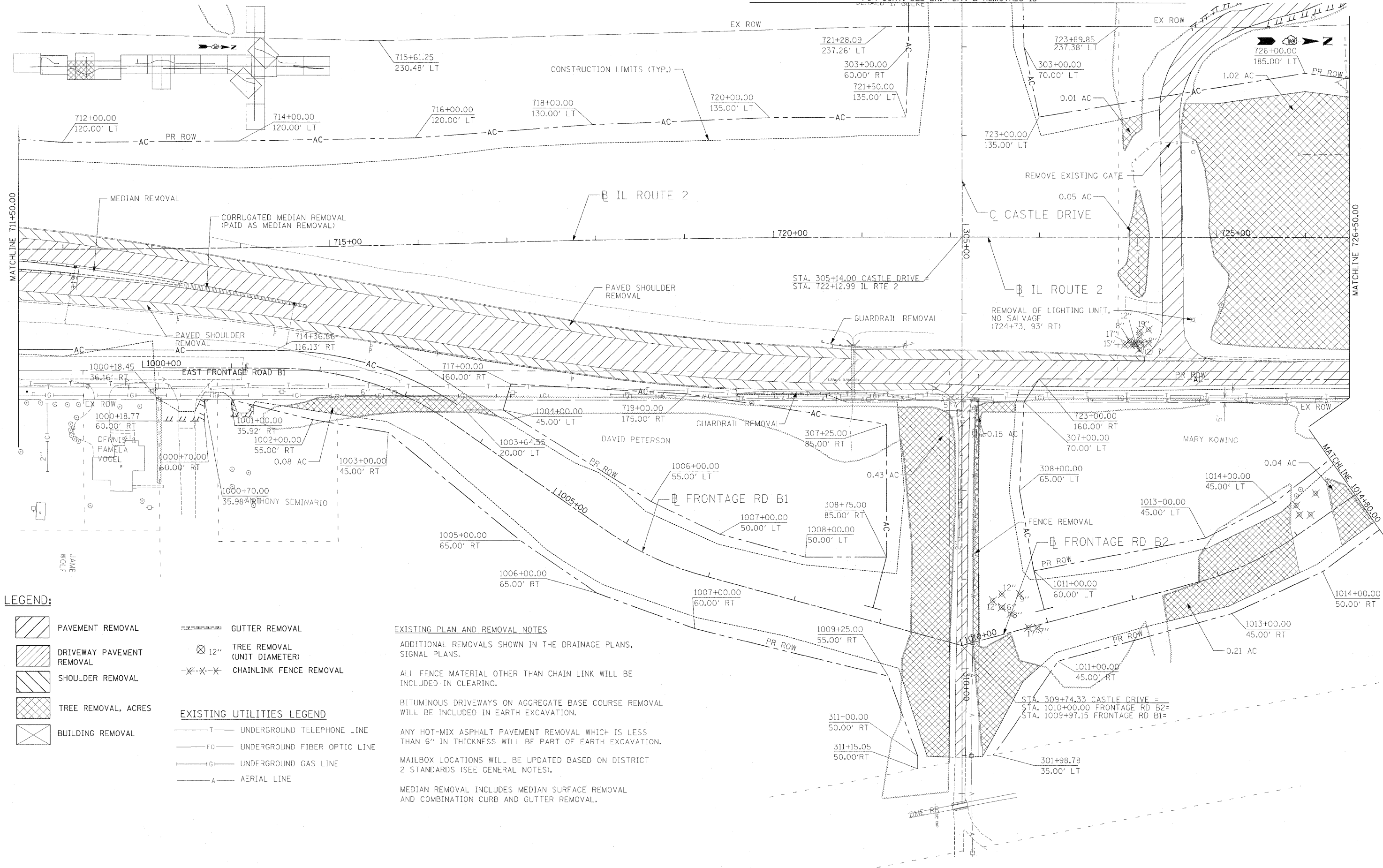


FOR CONT. SEE EX. PLAN & REMOVALS 13



LEGEND:

- PAVEMENT REMOVAL
  - DRIVEWAY PAVEMENT REMOVAL
  - SHOULDER REMOVAL
  - TREE REMOVAL, ACRES
  - BUILDING REMOVAL
  - GUTTER REMOVAL
  - 12" TREE REMOVAL (UNIT DIAMETER)
  - CHAINLINK FENCE REMOVAL
- EXISTING UTILITIES LEGEND
- UNDERGROUND TELEPHONE LINE
  - UNDERGROUND FIBER OPTIC LINE
  - UNDERGROUND GAS LINE
  - AERIAL LINE

EXISTING PLAN AND REMOVAL NOTES

ADDITIONAL REMOVALS SHOWN IN THE DRAINAGE PLANS, SIGNAL PLANS.

ALL FENCE MATERIAL OTHER THAN CHAIN LINK WILL BE INCLUDED IN CLEARING.

BITUMINOUS DRIVEWAYS ON AGGREGATE BASE COURSE REMOVAL WILL BE INCLUDED IN EARTH EXCAVATION.

ANY HOT-MIX ASPHALT PAVEMENT REMOVAL WHICH IS LESS THAN 6" IN THICKNESS WILL BE PART OF EARTH EXCAVATION.

MAILBOX LOCATIONS WILL BE UPDATED BASED ON DISTRICT 2 STANDARDS (SEE GENERAL NOTES).

MEDIAN REMOVAL INCLUDES MEDIAN SURFACE REMOVAL AND COMBINATION CURB AND GUTTER REMOVAL.

USER NAME = zuikowd	DESIGNED STS/GC	REVISED -
DRAWN RDT	REVISED -	
CHECKED CC	REVISED -	
DATE 01-14-11	REVISED -	

**STATE OF ILLINOIS  
DEPARTMENT OF TRANSPORTATION**

ILLINOIS ROUTE 2  
EXISTING PLAN AND REMOVALS 3  
STA 711+50 TO 726+50

SCALE: 1"=50' SHEET NO. 54 OF 530 SHEETS STA. TO STA.

F.A.P. RTE. 734	SECTION 77-2-2 & 77-2B-1	COUNTY WINNEBAGO	TOTAL SHEETS 530	SHEET NO. 54
CONTRACT NO. 64813				
FED. ROAD DIST. NO. ILLINOIS FED. AID PROJECT				