

LEGEND:

- PAVEMENT REMOVAL
- DRIVEWAY PAVEMENT REMOVAL
- SHOULDER REMOVAL
- TREE REMOVAL, ACRES
- BUILDING REMOVAL

- GUTTER REMOVAL
- 12" TREE REMOVAL (UNIT DIAMETER)
- CHAINLINK FENCE REMOVAL

EXISTING UTILITIES LEGEND

- UNDERGROUND TELEPHONE LINE
- UNDERGROUND FIBER OPTIC LINE
- UNDERGROUND GAS LINE
- AERIAL LINE

EXISTING PLAN AND REMOVAL NOTES

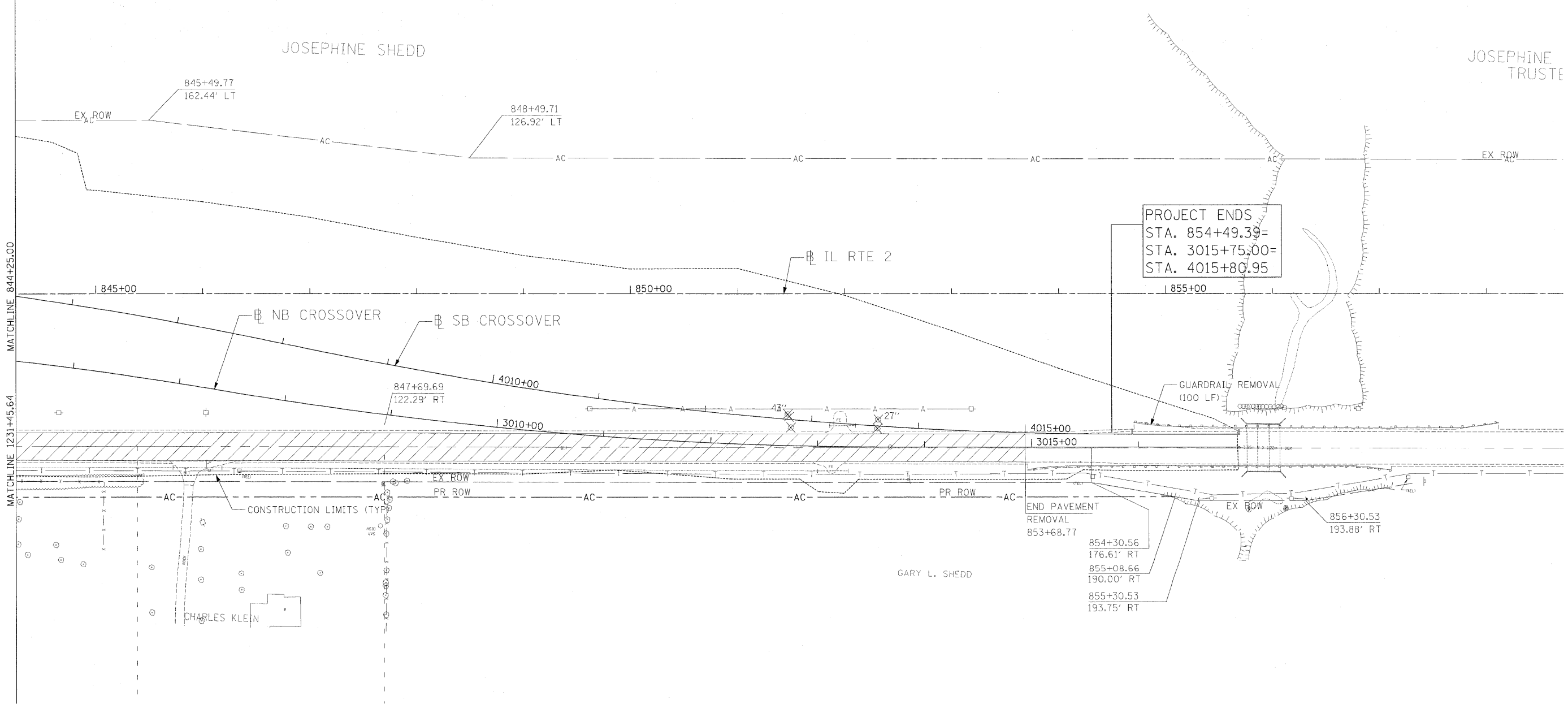
ADDITIONAL REMOVALS SHOWN IN THE DRAINAGE PLANS, SIGNAL PLANS.

ALL FENCE MATERIAL OTHER THAN CHAIN LINK WILL BE INCLUDED IN CLEARING.

BITUMINOUS DRIVEWAYS ON AGGREGATE BASE COURSE REMOVAL WILL BE INCLUDED IN EARTH EXCAVATION.

ANY HOT-MIX ASPHALT PAVEMENT REMOVAL WHICH IS LESS THAN 6" IN THICKNESS WILL BE PART OF EARTH EXCAVATION.

MAILBOX LOCATIONS WILL BE UPDATED BASED ON DISTRICT 2 STANDARDS (SEE GENERAL NOTES).



I:\projects\1125\Assignment_1\Sheets\Civil\Removals\12-28-11-12.dwg

USER NAME = zuikowd	DESIGNED STS/GC	REVISED -
	DRAWN RDT	REVISED -
PLOT SCALE = 50.0000 FT / IN.	CHECKED GC	REVISED -
PLOT DATE = 2/2/2011	DATE 01-14-11	REVISED -

**STATE OF ILLINOIS
DEPARTMENT OF TRANSPORTATION**

ILLINOIS ROUTE 2 EXISTING PLAN AND REMOVALS 12 STA 844+25 TO 856+50	
SCALE: 1"=50'	SHEET NO. 63 OF 530 SHEETS
STA.	TO STA.

F.A.P. RTE. 734	SECTION 77-2-2 & 77-2B-1	COUNTY WINNEBAGO	TOTAL SHEETS 530	SHEET NO. 63
FED. ROAD DIST. NO. [ILLINOIS] FED. AID PROJECT			CONTRACT NO. 64813	