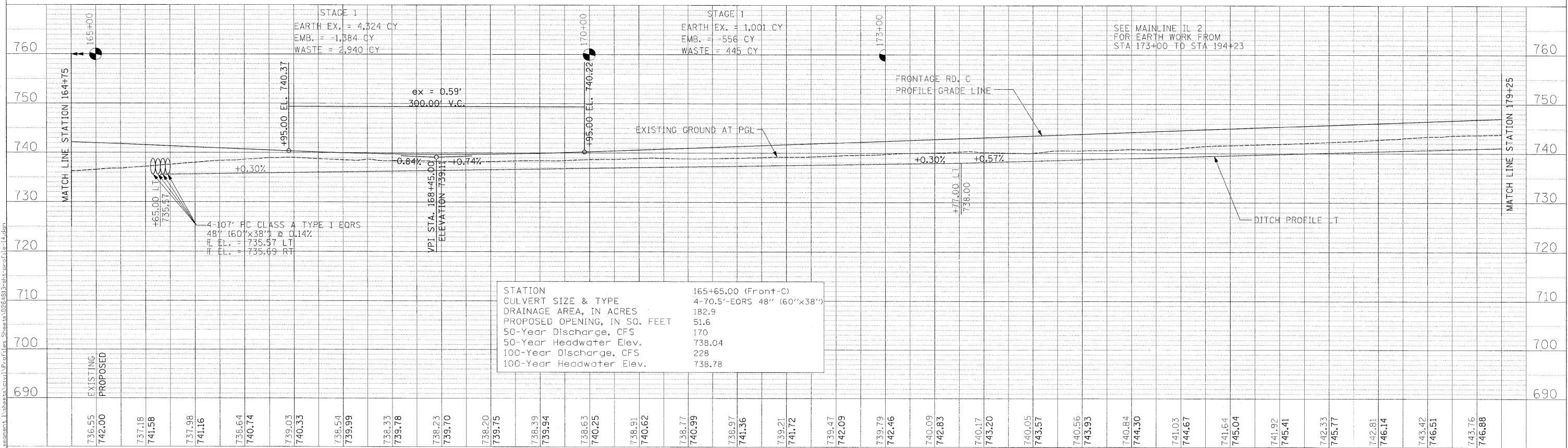
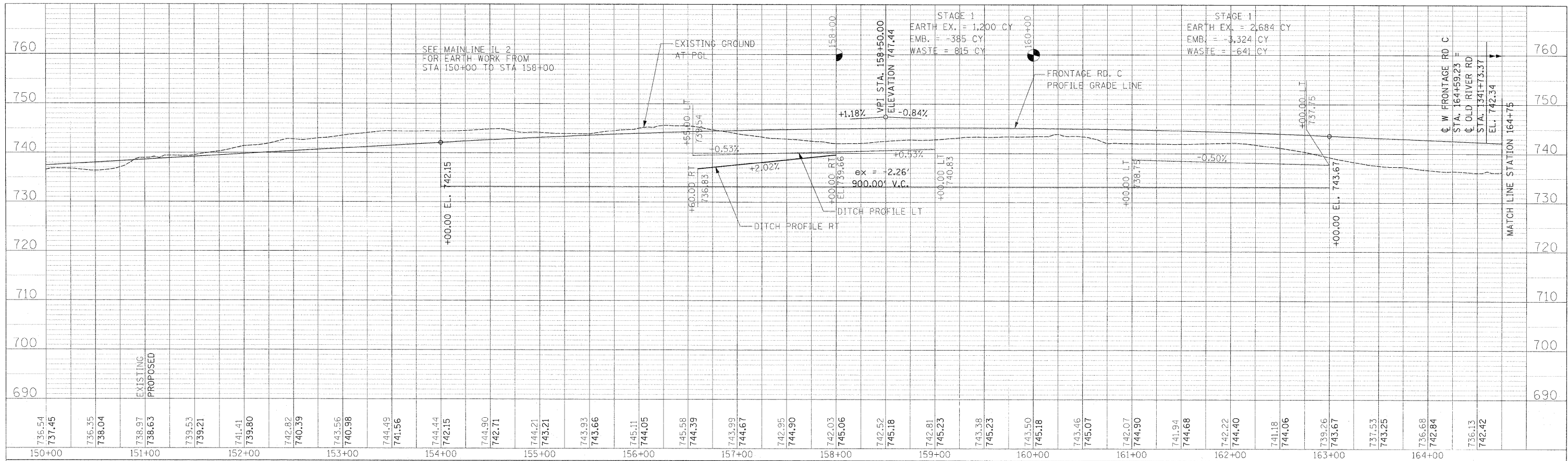


PLAN	REVISIONS	BY	DATE
NO.	NO.		
NO.	NO.		
NO.	NO.		

PROFILE	REVISIONS	BY	DATE
NO.	NO.		
NO.	NO.		
NO.	NO.		



STATION	165+65.00 (Front-C)
CULVERT SIZE & TYPE	4-70.5'-EORS 48" (60"x38")
DRAINAGE AREA, IN ACRES	182.9
PROPOSED OPENING, IN SQ. FEET	51.6
50-Year Discharge, CFS	170
50-Year Headwater Elev.	738.04
100-Year Discharge, CFS	228
100-Year Headwater Elev.	738.78

USER NAME = zulkowid	DESIGNED RDT/GC	REVISED -
	DRAWN RDT	REVISED -
PLOT SCALE = 50.0000 FT / IN.	CHECKED GC	REVISED -
PLOT DATE = 2/2/2011	DATE 01-14-11	REVISED -

**STATE OF ILLINOIS  
DEPARTMENT OF TRANSPORTATION**

**FRONTAGE RD C  
PROFILE SHEET 14**

SCALE: H=1/50, V=1/10 SHEET NO. 107 OF 530 SHEETS STA. 150+00 TO STA. 179+25

F.A.P. RTE.	SECTION	COUNTY	TOTAL SHEETS	SHEET NO.
734	77-2-1 & 77-2B-2	WINNEBAGO	530	107
CONTRACT NO. 64813				

ILLINOIS FED. AID PROJECT