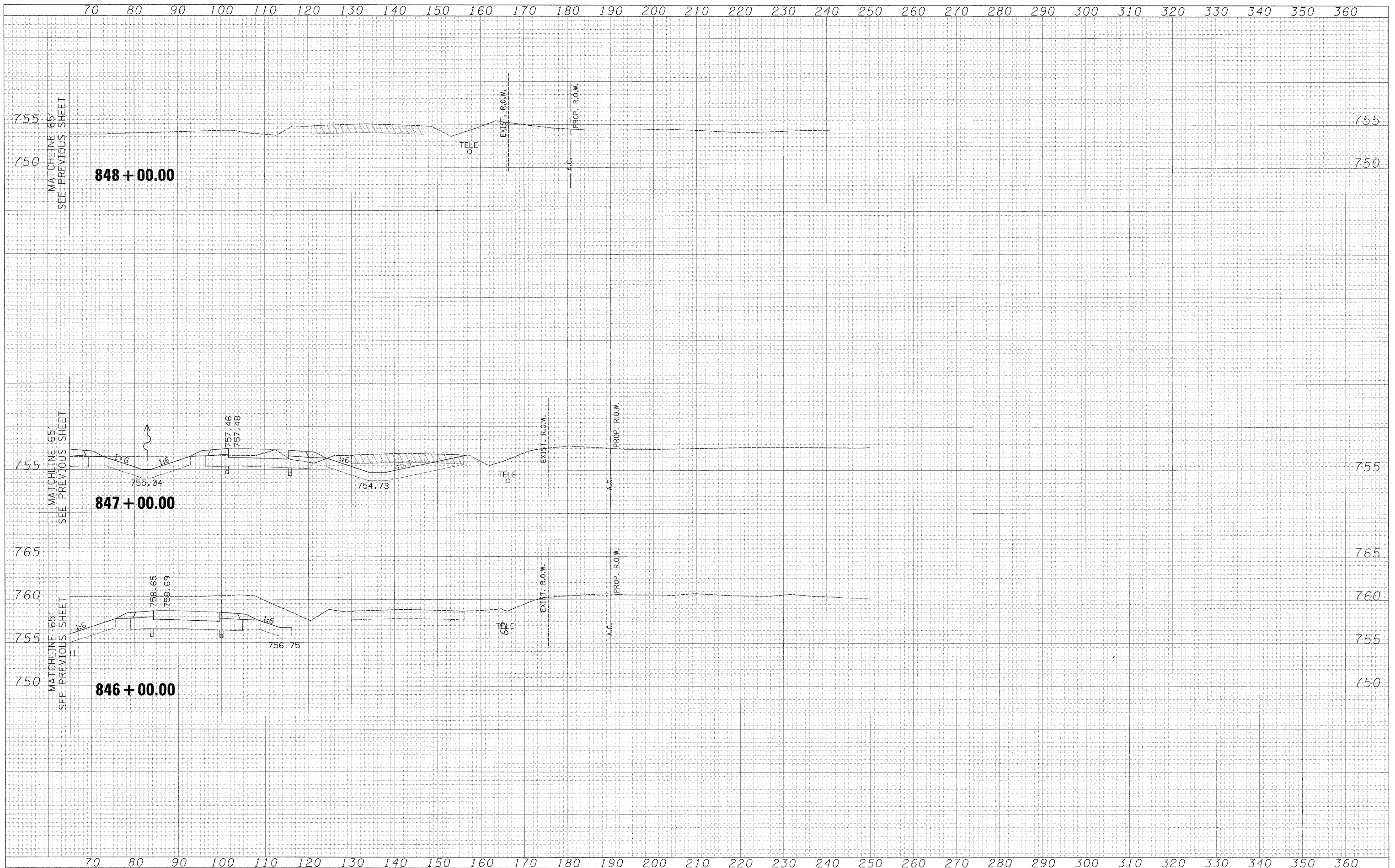


FINAL SURVEY	BY	DATE
SURVEYED		
NOTE BOOK		
NO.		
SURVEYED		
TEMPLATE		
AREAS		
CHECKED		

ORIGINAL SURVEY	BY	DATE
SURVEYED		
NOTE BOOK		
NO.		
SURVEYED		
TEMPLATE		
AREAS		
CHECKED		



70	80	90	100	110	120	130	140	150	160	170	180	190	200	210	220	230	240	250	260	270	280	290	300	310	320	330	340	350	360												
USER NAME = zulkowad DESIGNED RDT DRAWN RDT CHECKED GC DATE 01-14-11												REVISED - REVISED - REVISED - REVISED -												<b>STATE OF ILLINOIS</b> <b>DEPARTMENT OF TRANSPORTATION</b>				<b>ILLINOIS ROUTE 2 NORTH TRANSITION</b> <b>STAGE 1 CROSS SECTIONS</b>				F.A.P. RTE. 734		SECTION 77-2-2 & 77-2B-1		COUNTY WINNEBAGO		TOTAL SHEETS 530		SHEET NO. 141	
PLOT SCALE = 10,000.00' / IN. PLOT DATE = 2/2/2011												SCALE: 1" = 100'												SHEET NO. 141 OF 530 SHEETS				STA. 845+30.72 TO STA. 847+00.00				CONTRACT NO. 64813				ILLINOIS FED. AID PROJECT					

\\projects\11294\segment\1\sheet\civil\traffic control\0264813-sht-ssht-IL2 North Transition Stage 1.dgn