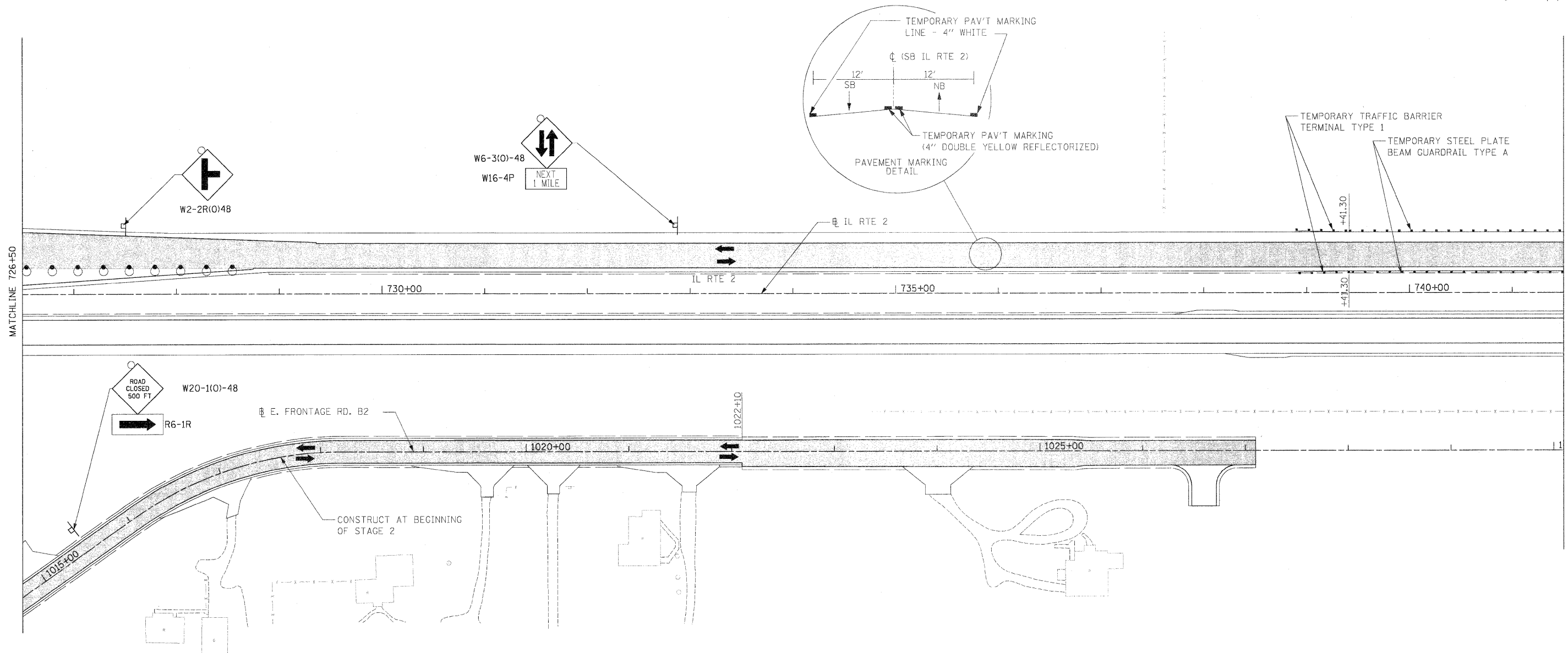


NOTE: TEMPORARY GUARDRAIL WEST OF MUD CREEK SHALL BE INSTALLED AT THE BEGINNING OF STAGE 2.



- LEGEND**
- EXISTING OR NEWLY CONSTRUCTED PAVEMENT USED FOR TRAFFIC
 - CONSTRUCTION ZONE DURING STAGE
 - DIRECTION OF TRAVEL
 - TEMPORARY PAVEMENT (SEE TYPICAL SECTION FOR WIDENING)
 - BARRICADE, TYPE III
 - DRUM WITH STEADY BURNING LIGHT
 - ARROW BOARD

USER NAME - thomperd	DESIGNED STS/RDT	REVISED -
PLLOT SCALE = 1/4" = 100 FT / IN.	DRAWN RDT	REVISED -
PLLOT DATE = 4/4/2011	CHECKED GC	REVISED -
	DATE 01-14-11	REVISED -

**STATE OF ILLINOIS
DEPARTMENT OF TRANSPORTATION**

**ILLINOIS ROUTE 2
SUGGESTED STAGES OF CONSTRUCTION
AND TRAFFIC CONTROL STAGE 2 - 4**

SCALE: 1"=50' SHEET NO. 150 OF 530 SHEETS STA. 726+50 TO STA. 741+50

F.A.P. RTE.	SECTION	COUNTY	TOTAL SHEETS	SHEET NO.
734	77-2-2 & 77-2B-1	WINNEBAGO	530	150
FED. ROAD DIST. NO. ILLINOIS FED. AID PROJECT			CONTRACT NO. 64813	

C:\projects\11284\document\11284\11284\Traffic Control\0264813-01-01-stage2-4.dgn