

STATION	165+65 (Front. Rd.-C)
CULVERT SIZE & TYPE	4-70.5'-EQRS 48" (60"x38")
DRAINAGE AREA, IN ACRES	182.9
PROPOSED OPENING, IN SQ. FEET	51.6
50-Year Discharge, CFS	170
50-Year Headwater Elev.	738.04
100-Year Discharge, CFS	228
100-Year Headwater Elev.	738.78

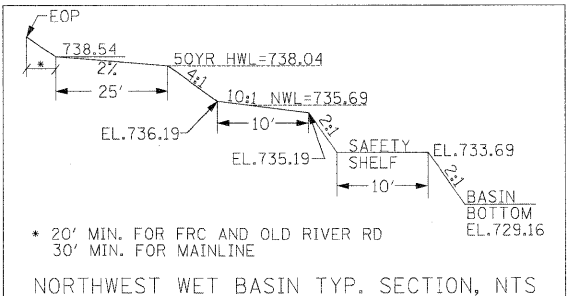
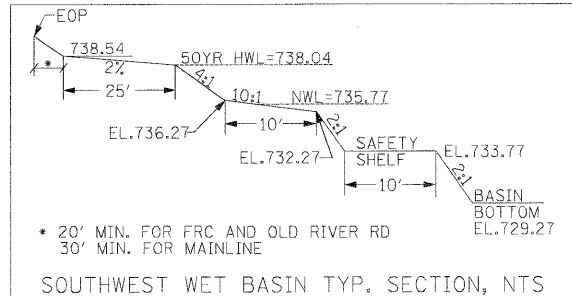
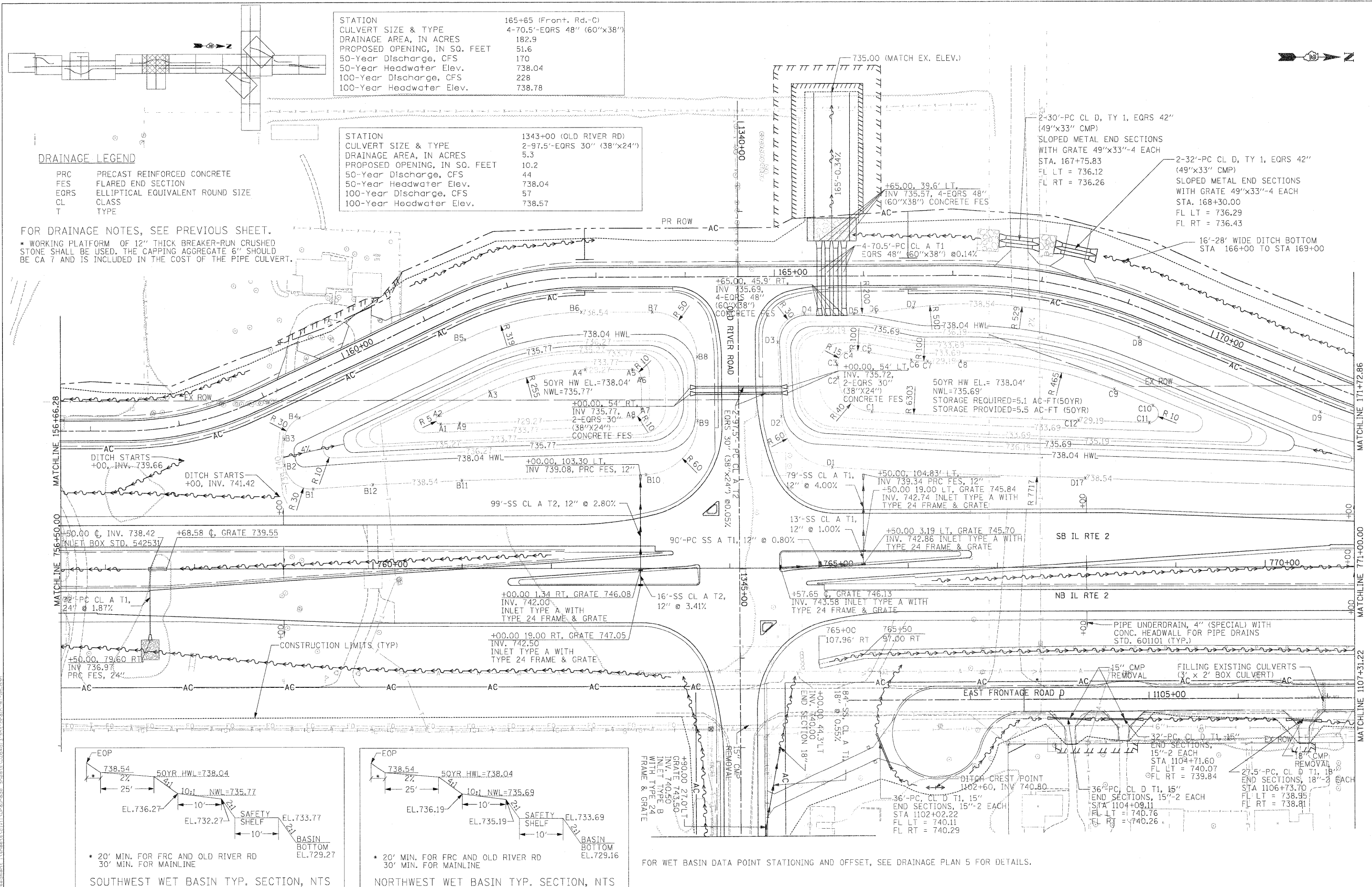
STATION	1343+00 (OLD RIVER RD)
CULVERT SIZE & TYPE	2-97.5'-EQRS 30" (38"x24")
DRAINAGE AREA, IN ACRES	5.3
PROPOSED OPENING, IN SQ. FEET	10.2
50-Year Discharge, CFS	44
50-Year Headwater Elev.	738.04
100-Year Discharge, CFS	57
100-Year Headwater Elev.	738.57

**DRAINAGE LEGEND**

- PRC PRECAST REINFORCED CONCRETE
- FES FLARED END SECTION
- EQRS ELLIPTICAL EQUIVALENT ROUND SIZE
- CL CLASS
- T TYPE

FOR DRAINAGE NOTES, SEE PREVIOUS SHEET.

\* WORKING PLATFORM OF 12" THICK BREAKER-RUN CRUSHED STONE SHALL BE USED. THE CAPPING AGGREGATE 6" SHOULD BE CA 7 AND IS INCLUDED IN THE COST OF THE PIPE CULVERT.



FOR WET BASIN DATA POINT STATIONING AND OFFSET, SEE DRAINAGE PLAN 5 FOR DETAILS.

**STATE OF ILLINOIS  
DEPARTMENT OF TRANSPORTATION**

ILLINOIS ROUTE 2  
DRAINAGE PLAN 6  
STA 756+50 TO 771+00

F.A.P. RTE.	SECTION	COUNTY	TOTAL SHEETS	SHEET NO.
734	77-2-2 & 77-28-1	WINNEBAGO	530	195
FED. ROAD DIST. NO.	ILLINOIS FED. AID PROJECT			
	CONTRACT NO. 64813			

SCALE: 1"=50' SHEET NO. 195 OF 530 SHEETS STA. TO STA.