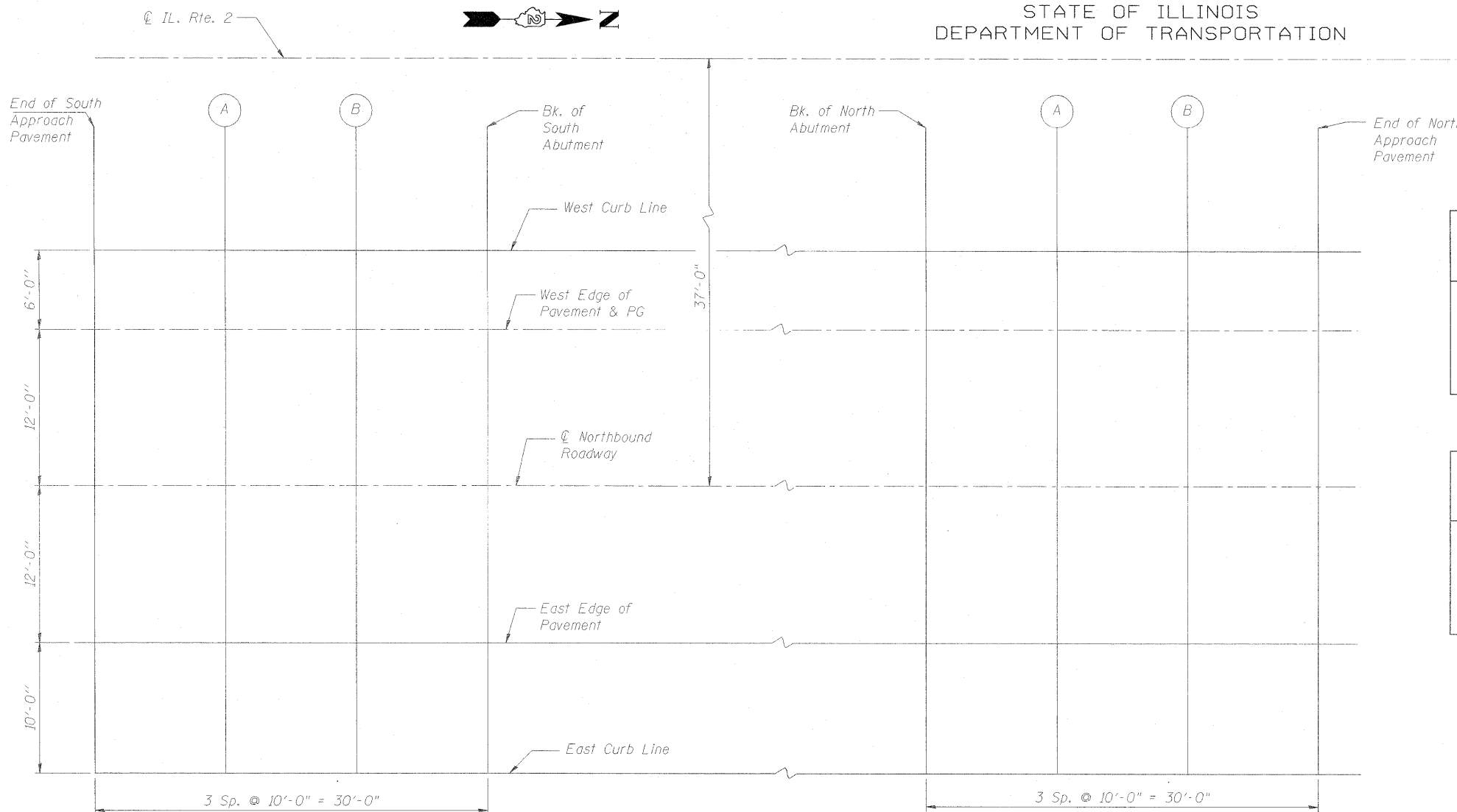


STATE OF ILLINOIS  
DEPARTMENT OF TRANSPORTATION



PLAN - NORTHBOUND

WEST CURB LINE

Location	Station	Offset	Theoretical Grade Elevations
Bk. N. Abut.	743+59.71	-18.000	722.973
A	743+69.71	-18.000	722.808
B	743+79.71	-18.000	722.649
End N. Appr. Pav't.	743+89.71	-18.000	722.494

Centerline NORTHBOUND ROADWAY

Location	Station	Offset	Theoretical Grade Elevations
Bk. N. Abut.	743+59.71	0.000	723.286
A	743+69.71	0.000	722.961
B	743+79.71	0.000	722.961
End N. Appr. Pav't.	743+89.71	0.000	722.807

WEST EDGE OF PAVEMENT & PG

Location	Station	Offset	Theoretical Grade Elevations
Bk. N. Abut.	743+59.71	-12.000	723.098
A	743+69.71	-12.000	722.933
B	743+79.71	-12.000	722.774
End N. Appr. Pav't.	743+89.71	-12.000	722.619

EAST EDGE OF PAVEMENT

Location	Station	Offset	Theoretical Grade Elevations
Bk. N. Abut.	743+59.71	12.000	723.098
A	743+69.71	12.000	722.933
B	743+79.71	12.000	722.774
End N. Appr. Pav't.	743+89.71	12.000	722.619

EAST CURB LINE

Location	Station	Offset	Theoretical Grade Elevations
Bk. N. Abut.	743+59.71	22.000	722.890
A	743+69.71	22.000	722.725
B	743+79.71	22.000	722.565
End N. Appr. Pav't.	743+89.71	22.000	722.411

WEST CURB LINE

Location	Station	Offset	Theoretical Grade Elevations
End S. Appr. Pav't.	742+16.71	-18.000	725.470
A	742+26.71	-18.000	725.295
B	742+36.71	-18.000	724.120
Bk. S. Abut.	742+46.71	-18.000	724.945

Centerline NORTHBOUND ROADWAY

Location	Station	Offset	Theoretical Grade Elevations
End S. Appr. Pav't.	742+16.71	0.000	725.783
A	742+26.71	0.000	725.608
B	742+36.71	0.000	725.433
Bk. S. Abut.	742+46.71	0.000	725.258

NORTH APPROACH PAVEMENT ELEVATIONS

WEST EDGE OF PAVEMENT & PG

Location	Station	Offset	Theoretical Grade Elevations
End S. Appr. Pav't.	742+16.71	-12.000	725.595
A	742+26.71	-12.000	725.420
B	742+36.71	-12.000	725.245
Bk. S. Abut.	742+46.71	-12.000	725.070

EAST EDGE OF PAVEMENT

Location	Station	Offset	Theoretical Grade Elevations
End S. Appr. Pav't.	742+16.71	12.000	725.595
A	742+26.71	12.000	725.420
B	742+36.71	12.000	725.245
Bk. S. Abut.	742+46.71	12.000	725.070

EAST CURB LINE

Location	Station	Offset	Theoretical Grade Elevations
End S. Appr. Pav't.	742+16.71	22.000	725.387
A	742+26.71	22.000	725.212
B	742+36.71	22.000	725.037
Bk. S. Abut.	742+46.71	22.000	724.862

TOP OF APPROACH SLAB ELEVATIONS NORTHBOUND  
STRUCTURE NO. 101-0178

SHEET NO. 9 30 SHEETS	F.A.P. RTE. 734	SECTION 77-2B-1, 77-2-2	COUNTY WINNEBAGO	TOTAL SHEETS 530	SHEET NO. 281
	CONTRACT NO. 64813				
FED. ROAD DIST. NO.		ILLINOIS FED. AID PROJECT			

DESIGNED - BTO
CHECKED - JAW
DRAWN - BTO
CHECKED - JAW

SOUTH APPROACH PAVEMENT ELEVATIONS