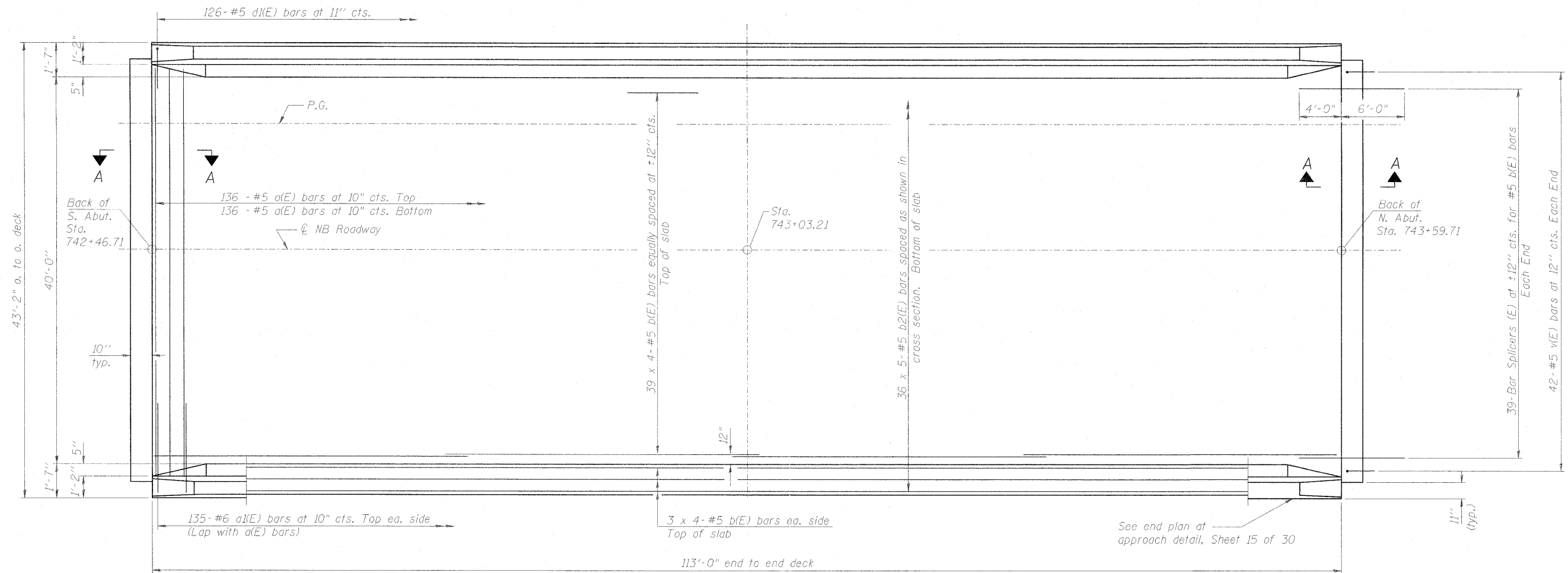


STATE OF ILLINOIS
DEPARTMENT OF TRANSPORTATION



NB DECK PLAN

MIN. BAR LAP

- #5 - 2'-2"
- #6 - 2'-7"

Notes:
See Sheet 15 of 30 for superstructure details, parapet reinforcement, and Bill of Material.
See Sheet 21 of 30 for Section A-A.
Reinforcement bars designated (E) shall be epoxy coated.
Bars indicated thus 39 x 4-#5 etc. indicates 39 lines of bars with 4 lengths per line.

DESIGNED	- JAW
CHECKED	- JAN
DRAWN	- BTD
CHECKED	- JAN

DECK PLAN - NORTHBOUND
STRUCTURE NO. 101-0178

SHEET NO. 11 30 SHEETS	F.A.P. RTE. 734	SECTION 77-2B-1, 77-2-2	COUNTY WINNEBAGO	TOTAL SHEETS 530	SHEET NO. 283
	FED. ROAD DIST. NO. ILLINOIS FED. AID PROJECT			CONTRACT NO. 64813	