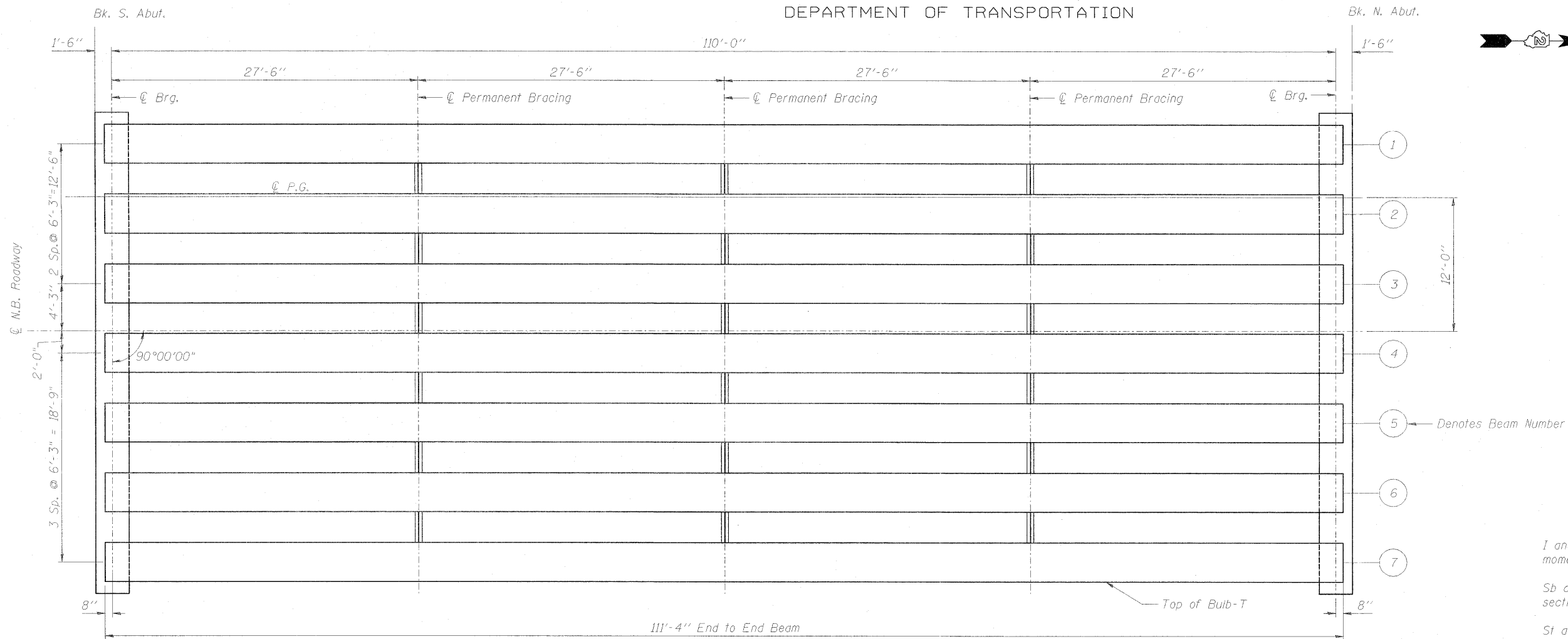


STATE OF ILLINOIS
DEPARTMENT OF TRANSPORTATION

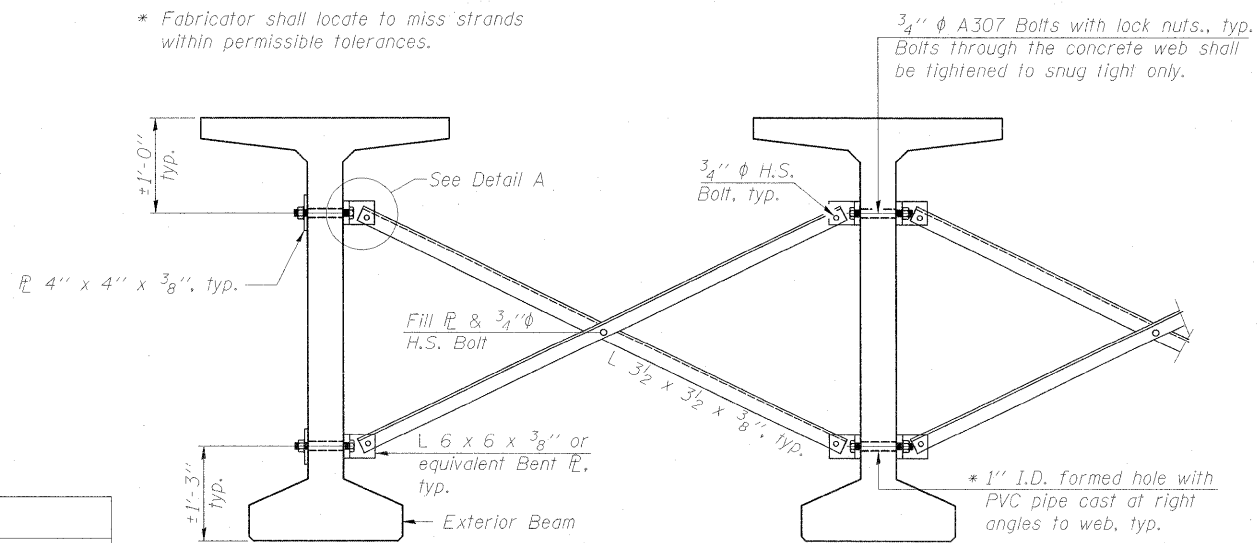


BULB-T FRAMING PLAN-NB

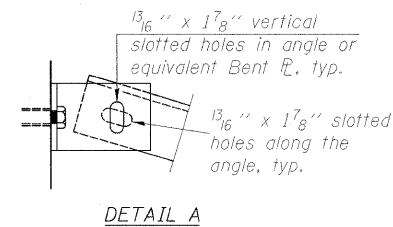
Interior Girder Moment Table		
0.5 Span		
I	(in ⁴)	392638
I'	(in ⁴)	716147
S _b	(in ³)	12224
S _{b'}	(in ³)	15865
S _t	(in ³)	12715
S _{t'}	(in ³)	40099
DL	(k/')	1.38
Mdl	(' k)	2093
s DL	(k/')	0.44
MsdL	(' k)	667
Mll	(' k)	968
M (Imp)	(' k)	206

Interior Girder Reaction Table		
Abut.		
R _{dl}	(k)	76.1
R _{sdl}	(k)	24.2
R _{ll}	(k)	37.4
Imp.	(k)	8.0
R (Total)	(k)	145.7

I and I' are the moment of inertia and composite moment of inertia of the beam section.
S_b and S_{b'} are the non-composite and composite section modulus for the bottom fiber of the prestressed beam.
S_t and S_{t'} are the non-composite and composite section modulus for the top fiber of the prestressed beam.



PERMANENT BRACING DETAILS
FOR BULB-T BEAMS



Notes:
All material for bracing shall be hot dip galvanized according to AASHTO M111 unless otherwise noted.
Two hardened washers are required for each set of oversized holes.
All holes shall be 5/16" φ unless otherwise noted.
5/16" x 3" x 3" plate washers are required over all slotted holes.
All bolts shall be galvanized according to AASHTO M232.
Bracing shall be installed as beams are erected and tightened as soon as possible during erection.
Permanent bracing shall not be paid for separately, but shall be included in the cost of Furnishing and Erecting Precast Prestressed Concrete Bulb T-Beams, 63".

DESIGNED -	BTD
CHECKED -	JAN
DRAWN -	BTD
CHECKED -	JAN

FRAMING PLAN NB & MOMENT TABLE
STRUCTURE NO. 101-0178

SHEET NO. 17 30 SHEETS	F.A.P. RTE.	SECTION	COUNTY	TOTAL SHEETS	SHEET NO.
	734	77-2B-1, 77-2-2	WINNEBAGO	530	289
FED. ROAD DIST. NO.			ILLINOIS FED. AID PROJECT		
CONTRACT NO. 64813					