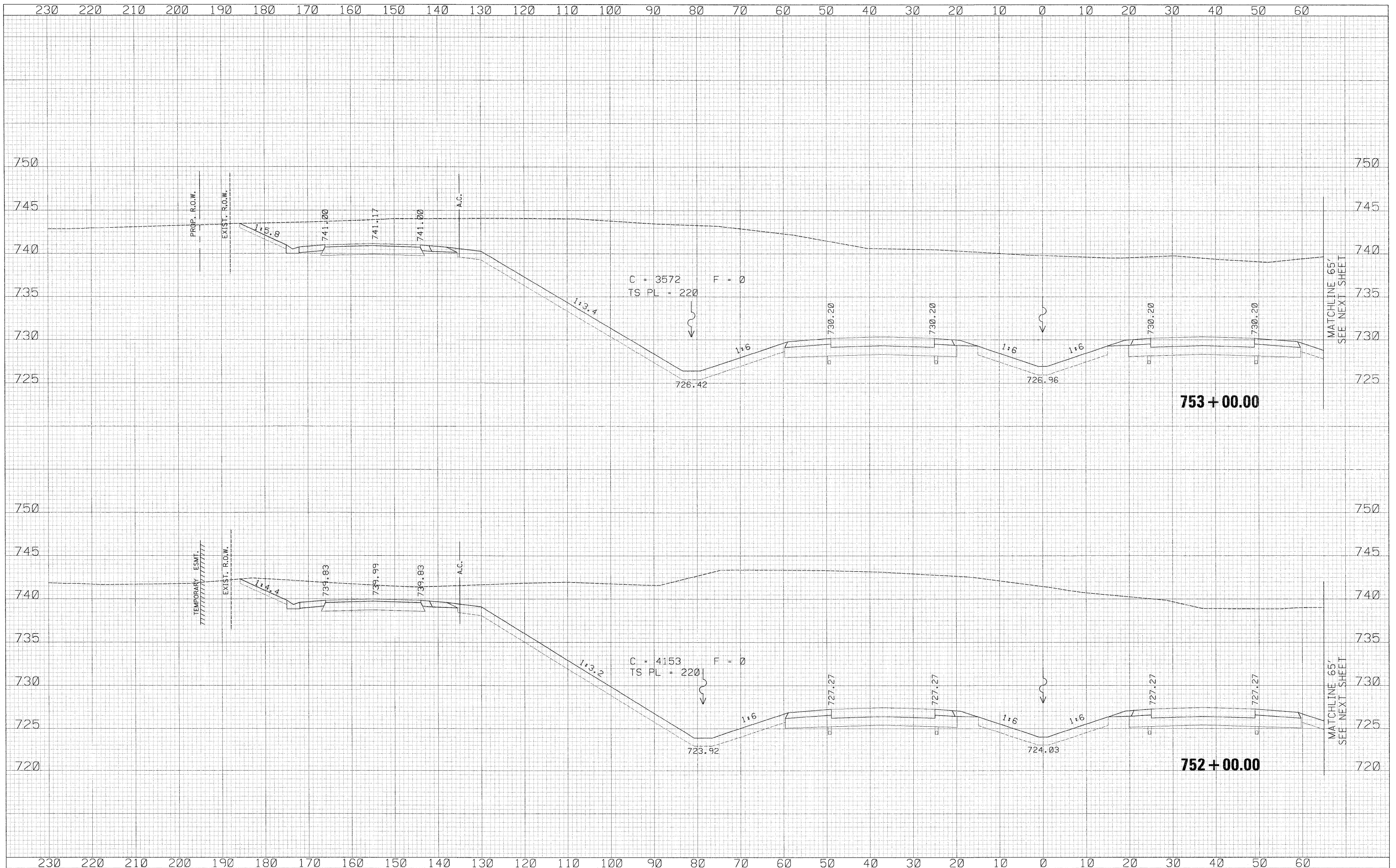


DATE	
BY	
FINAL SURVEY	
SCHEMATIC	
FLATTENED	
TEMPLATE	
NOTE BOOK	
AREAS CHECKED	
NO.	

DATE	
BY	
ORIGINAL SURVEY	
SCHEMATIC	
FLATTENED	
TEMPLATE	
NOTE BOOK	
AREAS CHECKED	
NO.	



USER NAME = zulkowso	DESIGNED - RDT	REVISED -	<b>STATE OF ILLINOIS</b> <b>DEPARTMENT OF TRANSPORTATION</b>	ILLINOIS ROUTE 2 CROSS SECTIONS		F.A.P. RTE.	SECTION	COUNTY	TOTAL SHEETS	SHEET NO.	
PLOT SCALE = 10.0000' / IN.	DRAWN - RDT	REVISED -		734	77-2-2 & 77-2B-1	WINNEBAGO	530	380			
PLOT DATE = 2/2/2011	CHECKED - GC	REVISED -		SCALE: 1/2" = 10'		SHEET NO. 380 OF 530 SHEETS		STA. 752+00.00 TO STA. 753+00.00		CONTRACT NO. 64813	
	DATE - 01-14-11	REVISED -		ILLINOIS FED. AID PROJECT							

\\projects\11254\segment\1\sheet\civil\section\0264813-sht-xsht-IL2.dgn