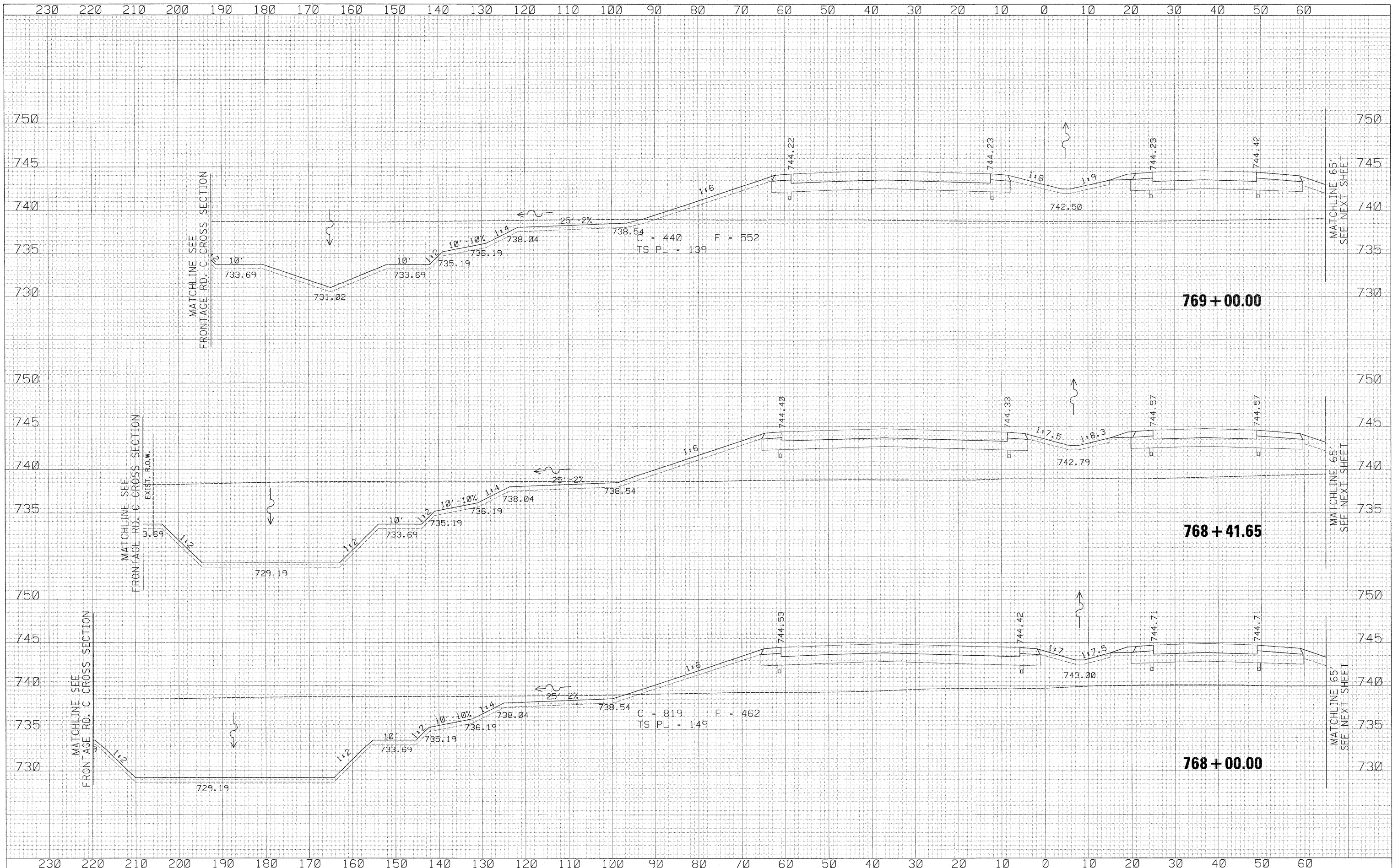


DATE	
BY	
FINAL SURVEY	CHECKED
NOTE BOOK	PLOTTED
NO.	TEMPLATE
	AREAS
	CHECKED

DATE	
BY	
ORIGINAL SURVEY	CHECKED
NOTE BOOK	PLOTTED
NO.	TEMPLATE
	AREAS
	CHECKED



USER NAME = zulkowsd	DESIGNED - RDT	REVISED -
	DRAWN - RDT	REVISED -
	CHECKED - GC	REVISED -
	DATE - 01-14-11	REVISED -

DESIGNED - RDT	REVISED -
DRAWN - RDT	REVISED -
CHECKED - GC	REVISED -
DATE - 01-14-11	REVISED -

**STATE OF ILLINOIS
DEPARTMENT OF TRANSPORTATION**

ILLINOIS ROUTE 2
CROSS SECTIONS

SCALE: 1" = 10' SHEET NO. 394 OF 530 SHEETS STA. 768+00.00 TO STA. 769+00.00

F.A.P. RTE. 734	SECTION 77-2-2 & 77-2B-1	COUNTY WINNEBAGO	TOTAL SHEETS 530	SHEET NO. 394
CONTRACT NO. 64813			ILLINOIS FED. AID PROJECT	

\\projects\11254\segment\1\sheet\civ\1\section\0264813-shr\ssht-IL2.dgn