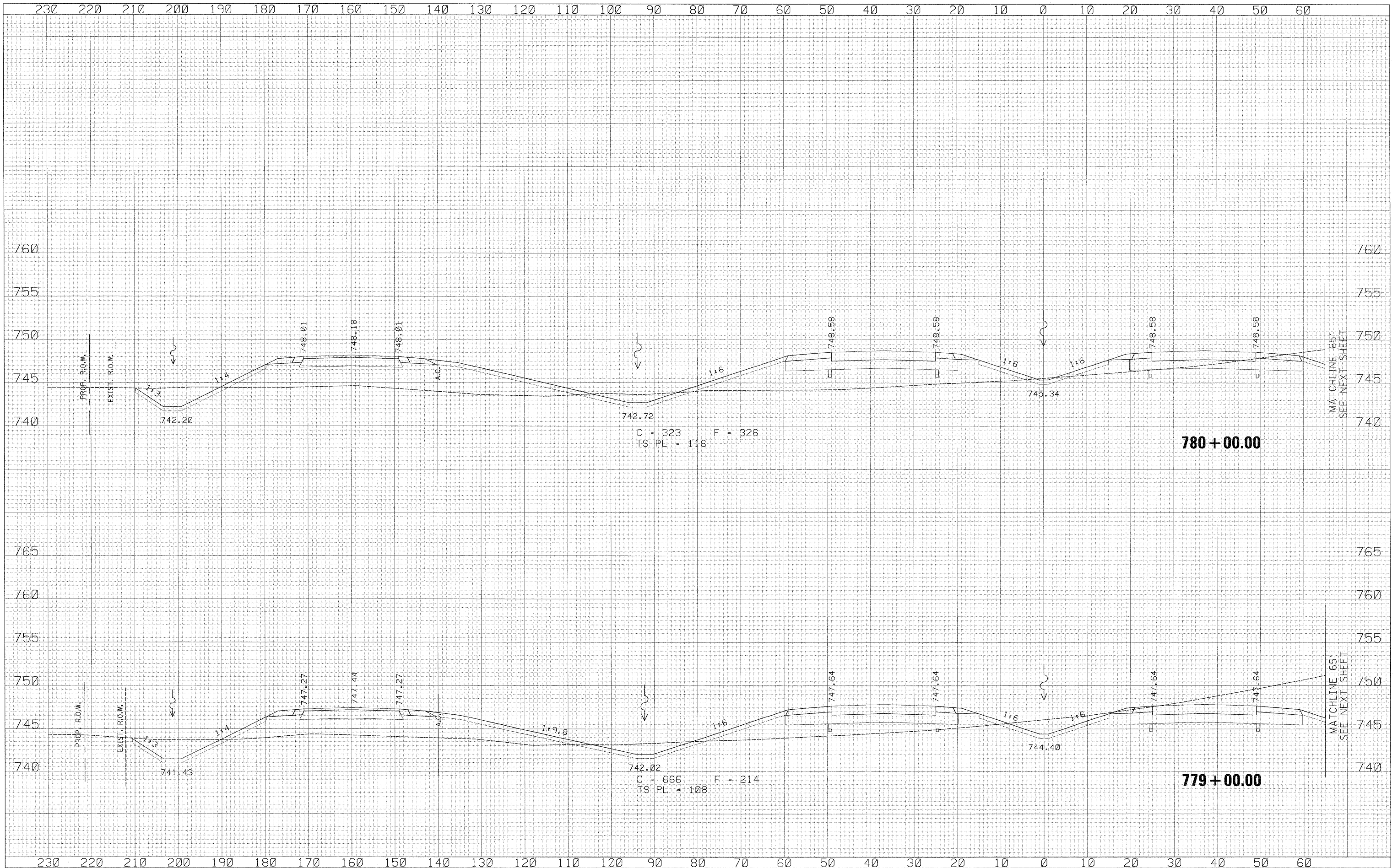


DATE	
BY	
FINAL SURVEY	
SUBMITTED	
PLOTTED	
NOTE BOOK	
AREAS CHECKED	
NO.	

DATE	
BY	
ORIGINAL SURVEY	
SUBMITTED	
PLOTTED	
NOTE BOOK	
AREAS CHECKED	
NO.	



USER NAME = zulkowd	DESIGNED - RDT	REVISED -	ILLINOIS ROUTE 2 CROSS SECTIONS SCALE: 1/4" = 10' SHEET NO. 406 OF 530 SHEETS STA. 779+00.00 TO STA. 780+00.00	F.A.P. RTE. 734	SECTION 77-2-2 & 77-2B-1	COUNTY WINNEBAGO	TOTAL SHEETS 530	SHEET NO. 406
PLCT SCALE = 1/8,000" = 1" IN.	DRAWN - RDT	REVISED -		STATE OF ILLINOIS DEPARTMENT OF TRANSPORTATION	CONTRACT NO. 64813		ILLINOIS FED. AID PROJECT	
PLCT DATE = 2/2/2011	CHECKED - GC	REVISED -						
	DATE - 01-14-11	REVISED -						

\\projects\11254\segment 1\sheet\cvt\section\0264813-sht-xsh-ll2.dgn