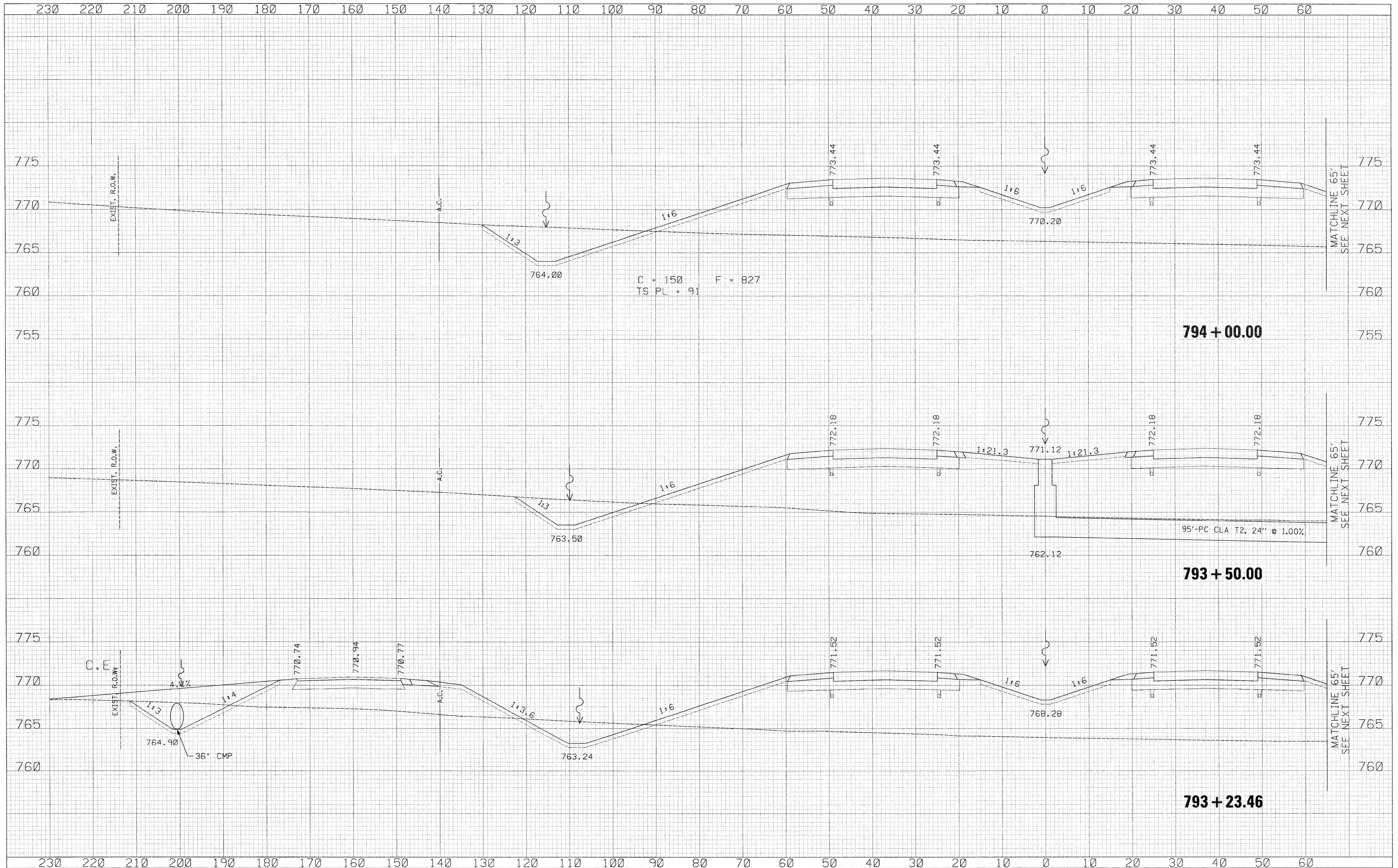


DATE	
BY	
SUPERVISED	
PLotted	
TEMPLATE	
AREAS CHECKED	
FINAL SURVEY	
NOTE BOOK	
NO.	

DATE	
BY	
SUPERVISED	
PLotted	
TEMPLATE	
AREAS CHECKED	
ORIGINAL SURVEY	
NOTE BOOK	
NO.	



USER NAME = zulkowsd	DESIGNED - RDT	REVISED -	<b>STATE OF ILLINOIS</b> <b>DEPARTMENT OF TRANSPORTATION</b>	ILLINOIS ROUTE 2 CROSS SECTIONS		F.A.P. RTE. 734	SECTION 77-2-2 & 77-2B-1	COUNTY WINNEBAGO	TOTAL SHEETS 530	SHEET NO. 424
PLOT SCALE = 10,0000' / IN.	DRAWN - RDT	REVISED -		SCALE: 1/2" = 10'	SHEET NO. 424 OF 530 SHEETS	STA. 793+23.46 TO STA. 794+00.00	CONTRACT NO. 64813		ILLINOIS FED. AID PROJECT	
PLOT DATE = 2/2/2011	CHECKED - GC	REVISED -								
	DATE - 01-14-11	REVISED -								

\\projects\11254\segment 1\sheet\civil\section\0264813-sht-ssht-IL2.dgn