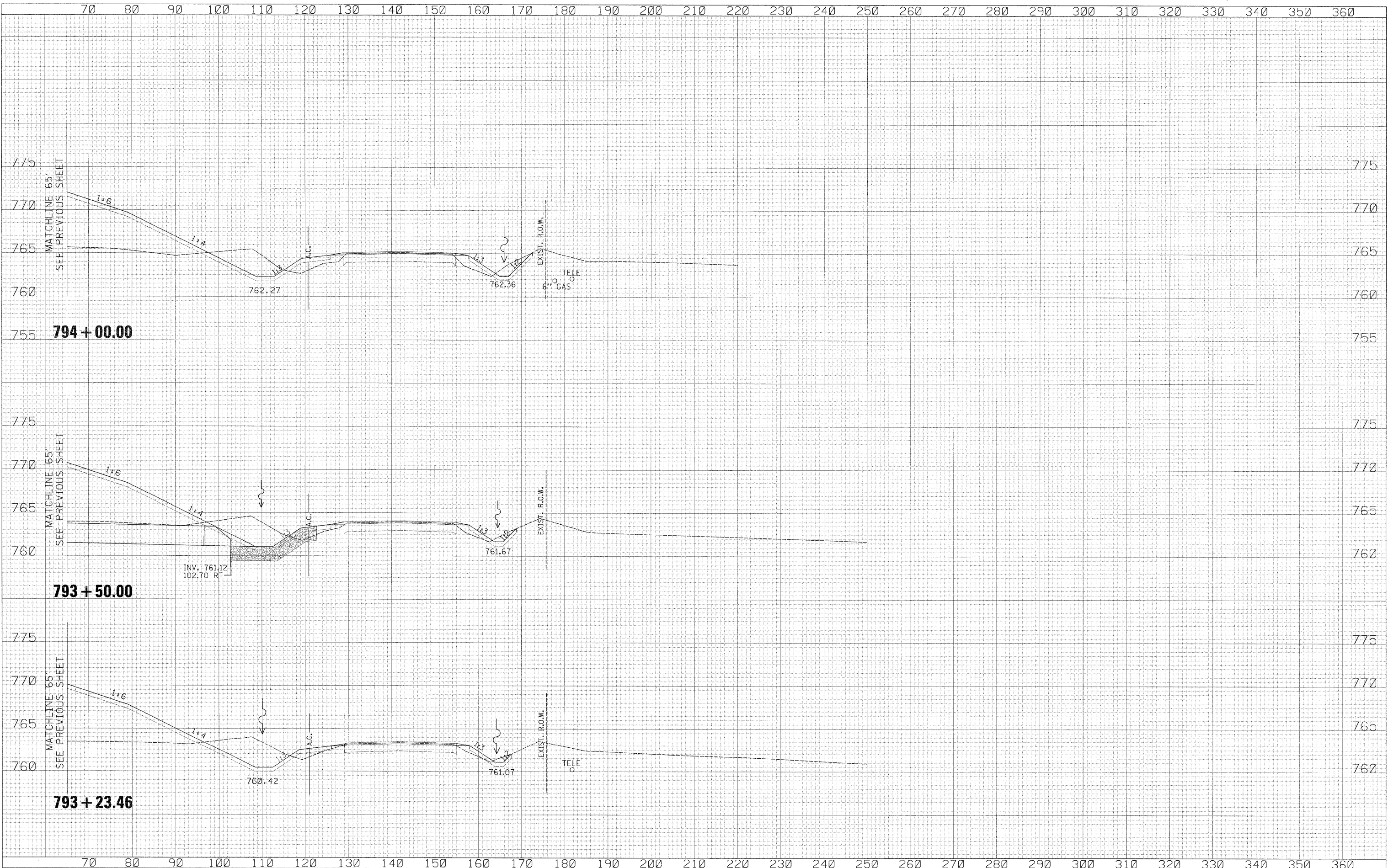


DATE	
BY	
FINAL SURVEY	
SURVEYED	
NOTE BOOK	
NO.	
AREAS CHECKED	
TEMPLATE	

DATE	
BY	
ORIGINAL SURVEY	
SURVEYED	
NOTE BOOK	
NO.	
AREAS CHECKED	
TEMPLATE	



USER NAME = zuikowad	DESIGNED - RDT	REVISED -
PLOT SCALE = 10,000' / IN.	DRAWN - RDT	REVISED -
PLOT DATE = 2/2/2011	CHECKED - GC	REVISED -
	DATE - 01-14-11	REVISED -

**STATE OF ILLINOIS
DEPARTMENT OF TRANSPORTATION**

ILLINOIS ROUTE 2
CROSS SECTIONS

SCALE: 1" = 10' SHEET NO. 425 OF 530 SHEETS STA. 793+23.46 TO STA. 794+00.00

F.A.P. RTE. 734	SECTION 77-2-2 & 77-2B-1	COUNTY WINNEBAGO	TOTAL SHEETS 530	SHEET NO. 425
CONTRACT NO. 64813				
ILLINOIS FED. AID PROJECT				

\\projects\11254\segment 1\sheet\civil\section\0264813-sht xsst-IL2.dgn