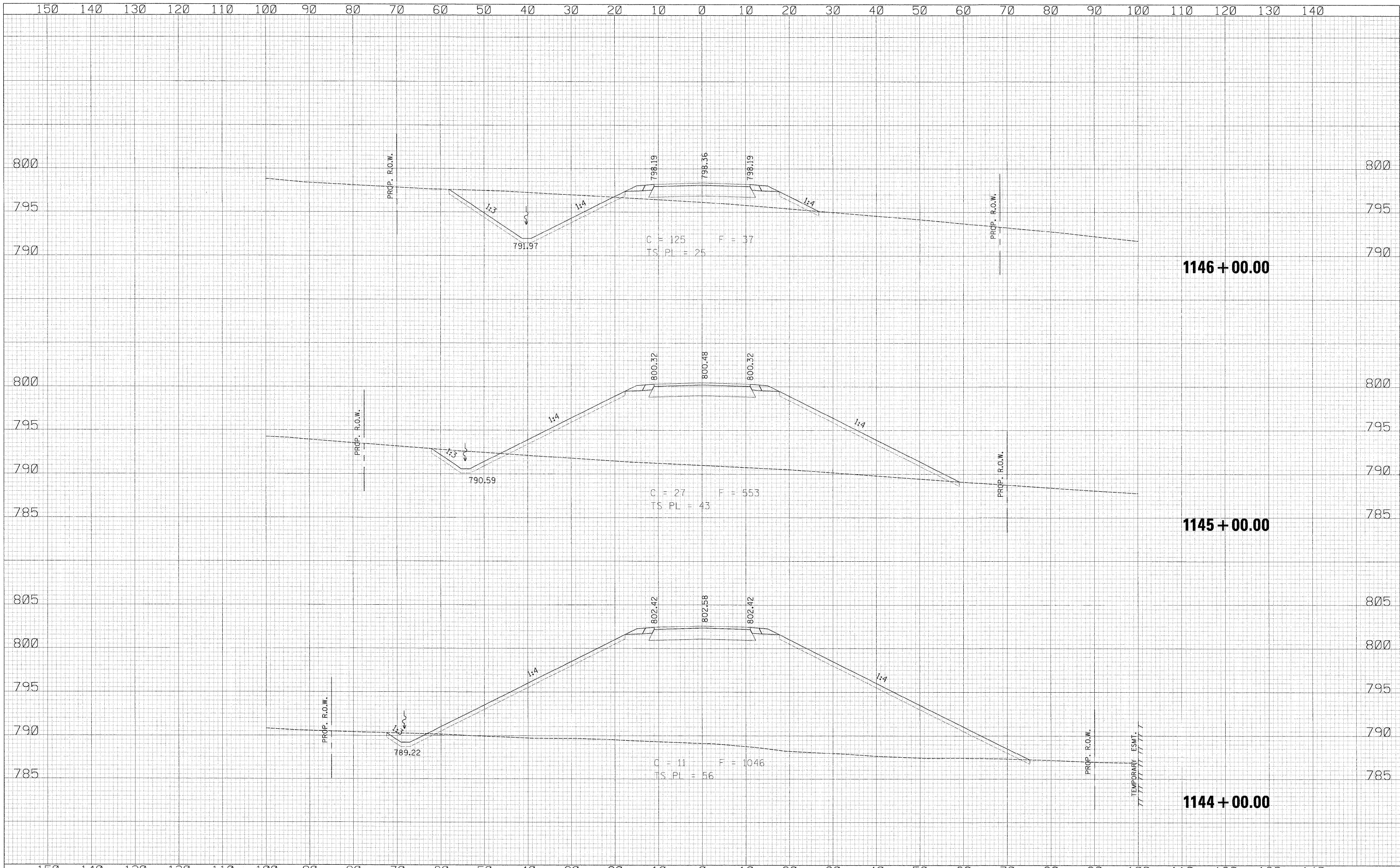


DATE	
BY	
FINAL SURVEY	
SURVEYED	
PLOTTED	
NOTE BOOK	
AREAS CHECKED	
NO.	

DATE	
BY	
ORIGINAL SURVEY	
SURVEYED	
PLOTTED	
NOTE BOOK	
AREAS CHECKED	
NO.	



150	140	130	120	110	100	90	80	70	60	50	40	30	20	10	0	10	20	30	40	50	60	70	80	90	100	110	120	130	140				
USER NAME = zulkowd DESIGNED RDT DRAWN RDT CHECKED GC DATE 01-14-11														REVISIONS REVISIONS REVISIONS REVISIONS				STATE OF ILLINOIS DEPARTMENT OF TRANSPORTATION										FRONTAGE ROAD D CROSS SECTIONS				F.A.P. RTE. 734 SECTION 77-2-2 & 77-2B-1 COUNTY WINNEBAGO TOTAL SHEETS 530 SHEET NO. 523 CONTRACT NO. 64813	
PLOT SCALE = 10.0000' / IN. PLOT DATE = 2/2/2011														SCALE: 1/2" = 10' SHEET NO. 523 OF 530 SHEETS STA. 1144+00.00 TO STA. 1146+00.00										ILLINOIS FED. AID PROJECT									

\\projects\11254\segment 1\sheet\civil\section\0264813-sht-xssht-FR-D.dgn