

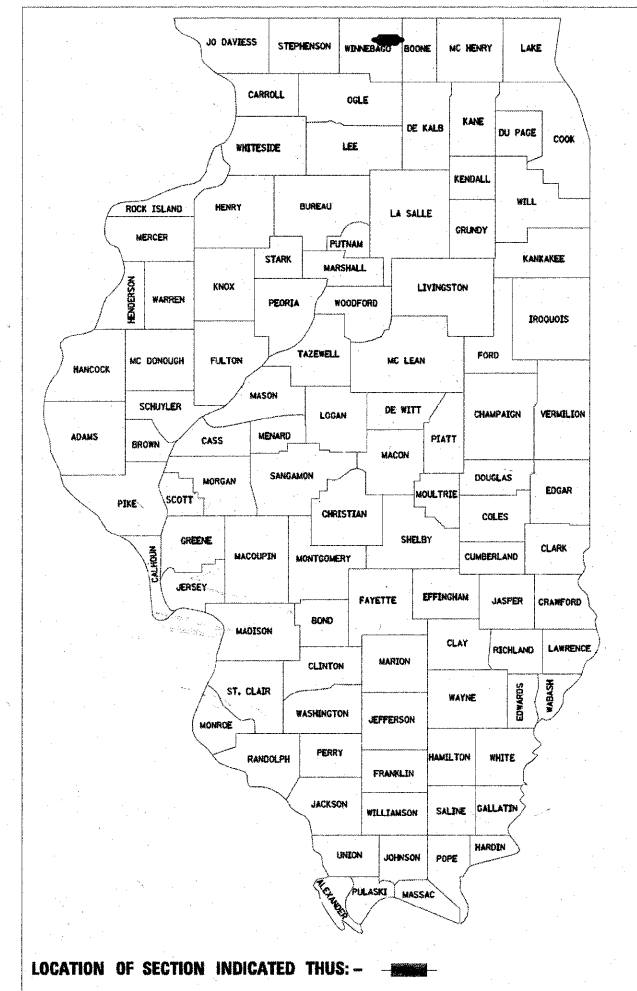
F.A.P. RTE.	SECTION	COUNTY	TOTAL SHEETS	SHEET NO.
303	129K-1	WINNEBAGO	401	1
FED. ROAD DIST. NO. 2		ILLINOIS	CONTRACT NO. 64987	

STATE OF ILLINOIS
DEPARTMENT OF TRANSPORTATION
DIVISION OF HIGHWAYS

PROPOSED
HIGHWAY PLANS

FAP ROUTE 303 (IL 173)
SECTION 129K-1
PROJECT: NHF-0303 (053)
ROADWAY RECONSTRUCTION AND
INTERSECTION IMPROVEMENTS
WINNEBAGO COUNTY

D-92-034-04



FOR INDEX OF SHEETS, SEE SHEET NO. 2
FOR LIST OF STANDARDS, SEE SHEET NO. 2

DESIGN DESIGNATION:

IL 173 - 3490 (25) PRINCIPAL ARTERIAL 6.03 (PCC-40)
 IL 251 - 2715 (25) PRINCIPAL ARTERIAL 6.03 (PCC-40)

IMPROVEMENT ENDS
 STA. 884 + 18.00

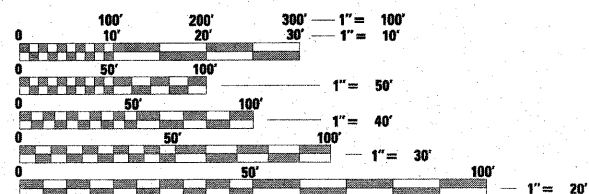
PROJECT BEGINS
 STA 986 + 81.58

SECTION ENDS
 STA. 878 + 58.13

C-92-162-10

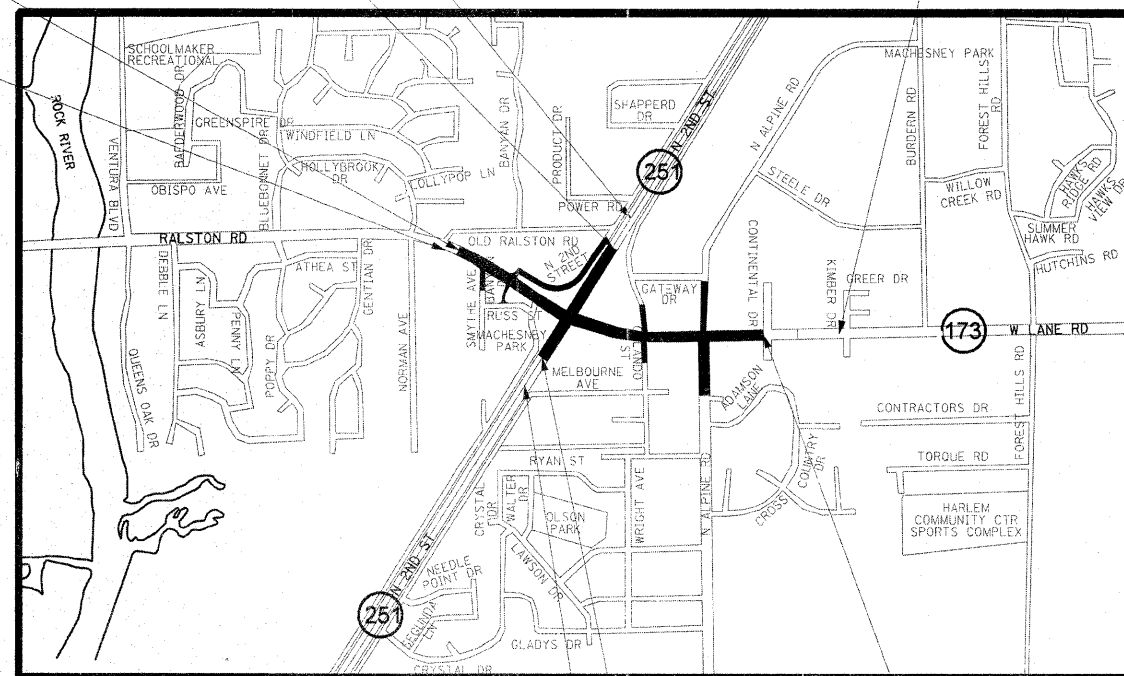
IMPROVEMENT ENDS
 STA. 1036 + 23.21

IMPROVEMENT BEGINS
 STA 985 + 19.20



FULL SIZE PLANS HAVE BEEN PREPARED USING STANDARD ENGINEERING SCALES. REDUCED SIZED PLANS WILL NOT CONFORM TO STANDARD SCALES. IN MAKING MEASUREMENTS ON REDUCED PLANS, THE ABOVE SCALES MAY BE USED.

J.U.L.I.E.
 JOINT UTILITY LOCATION INFORMATION FOR EXCAVATION
 1-800-892-0123
 OR 811

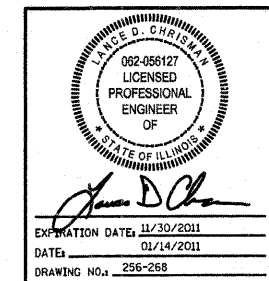
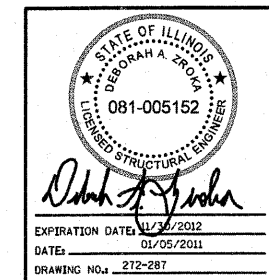
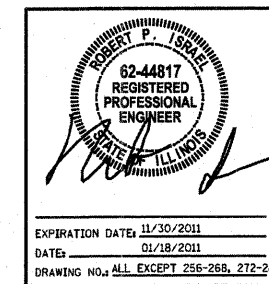


IMPROVEMENT BEGINS
 STA. 857 + 37.46

SECTION BEGINS
 STA. 862 + 93.96

PROJECT ENDS
 STA. 1028 + 00.00

GROSS LENGTH = 4118.42 FT. = 0.780 MILE
 NET LENGTH = 4118.42 FT. = 0.780 MILE
 GROSS LENGTH (IL 251) = 1564.17 FT. = 0.296 MILE
 NET LENGTH (IL 251) = 1564.17 FT. = 0.296 MILE



STATE OF ILLINOIS
DEPARTMENT OF TRANSPORTATION
DIVISION OF HIGHWAYS

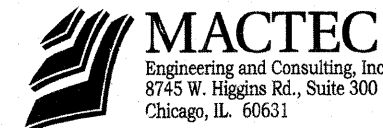
SUBMITTED JAN 20 20 11

[Signature]
 DEPUTY DIRECTOR OF HIGHWAYS, REGION ENGINEER

May 13 20 11
[Signature]
 ENGINEER OF DESIGN AND ENVIRONMENT

May 13 20 11
[Signature]
 DIRECTOR OF HIGHWAYS, CHIEF ENGINEER

PRINTED BY THE AUTHORITY
OF THE STATE OF ILLINOIS



SECTION 17, 18, 19, 20
HARLEM TOWNSHIP