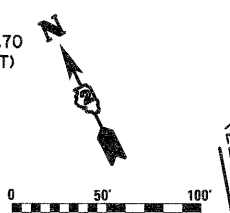


STA. 994+52.77 (PR C IL 173)=
 STA. 13+20.20 (PR C BANYAN DR)=
 STA. 50+00.00 (PR C N. 2ND ST)

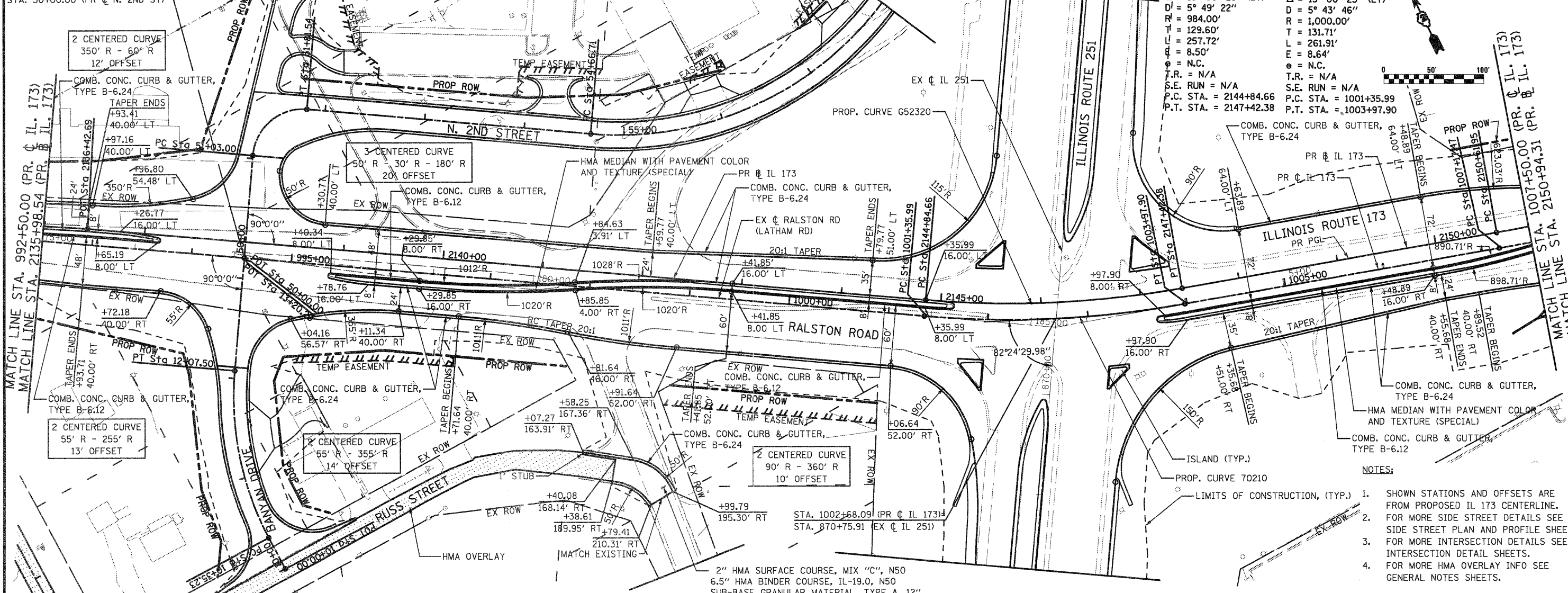
PROP. CURVE G52320
 PI STA. = 2146+14.26
 $\Delta = 15^\circ 00' 23''$ (LT)
 $D = 5^\circ 49' 22''$
 $R = 984.00'$
 $L = 129.60'$
 $T = 257.72'$
 $E = 8.50'$
 $\phi = N.C.$
 T.R. = N/A
 S.E. RUN = N/A
 P.C. STA. = 2144+84.66
 P.T. STA. = 2147+42.38

PROP. CURVE 70210
 PI STA. = 1002+67.70
 $\Delta = 15^\circ 00' 23''$ (LT)
 $D = 5^\circ 43' 46''$
 $R = 1,000.00'$
 $L = 131.71'$
 $T = 261.91'$
 $E = 8.64'$
 $\phi = N.C.$
 T.R. = N/A
 S.E. RUN = N/A
 P.C. STA. = 1001+35.99
 P.T. STA. = 1003+97.90

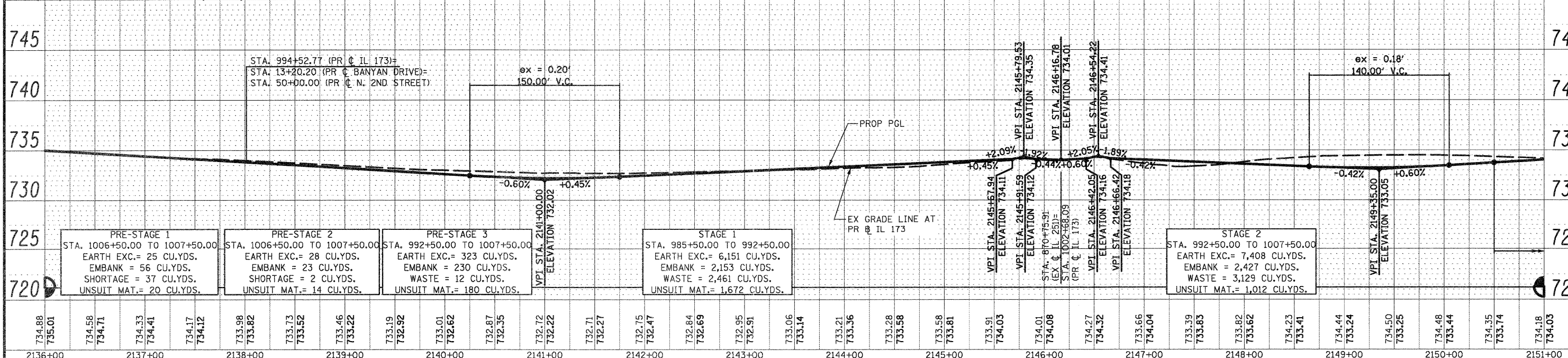


PLAN	SURVEYED	DATE
	PLOTTED	
	CHECKED	
	BY	
	DATE	

PROFILE	SURVEYED	DATE
	PLOTTED	
	CHECKED	
	BY	
	DATE	



- NOTES:
1. SHOWN STATIONS AND OFFSETS ARE FROM PROPOSED IL 173 CENTERLINE.
 2. FOR MORE SIDE STREET DETAILS SEE SIDE STREET PLAN AND PROFILE SHEETS.
 3. FOR MORE INTERSECTION DETAILS SEE INTERSECTION DETAIL SHEETS.
 4. FOR MORE HMA OVERLAY INFO SEE GENERAL NOTES SHEETS.



FILE NAME = 0264987-ah-t-pln-prf-02.dgn	USER NAME = 328289971	DESIGNED - LOM	REVISED -	PLAN AND PROFILE				F.A.P. RTE. = 303	SECTION = 129K-1	COUNTY = WINNEBAGO	TOTAL SHEETS = 401	SHEET NO. = 62
	PLOT SCALE = 1/8" = 100'	DRAWN - MG	REVISED -	RALSTON ROAD \ ILLINOIS ROUTE 173				SCALE:	SHEET NO. OF SHEETS	STA. 992+50.00 TO STA. 1007+50.00	CONTRACT NO. 64987	
	PLOT DATE = 1/18/2011	CHECKED - PDK	REVISED -	STATE OF ILLINOIS DEPARTMENT OF TRANSPORTATION				FED. ROAD DIST. NO. 2 ILLINOIS FED. AID PROJECT				
		DATE = 01-19-2011	REVISED -									